



# Central Pollution Control Board

## Air Quality Status for Delhi & NCR

Dated – December 09, 2022



### Current Air Quality Status:

#### Air Quality Index (AQI) (Average of past 24 hours)

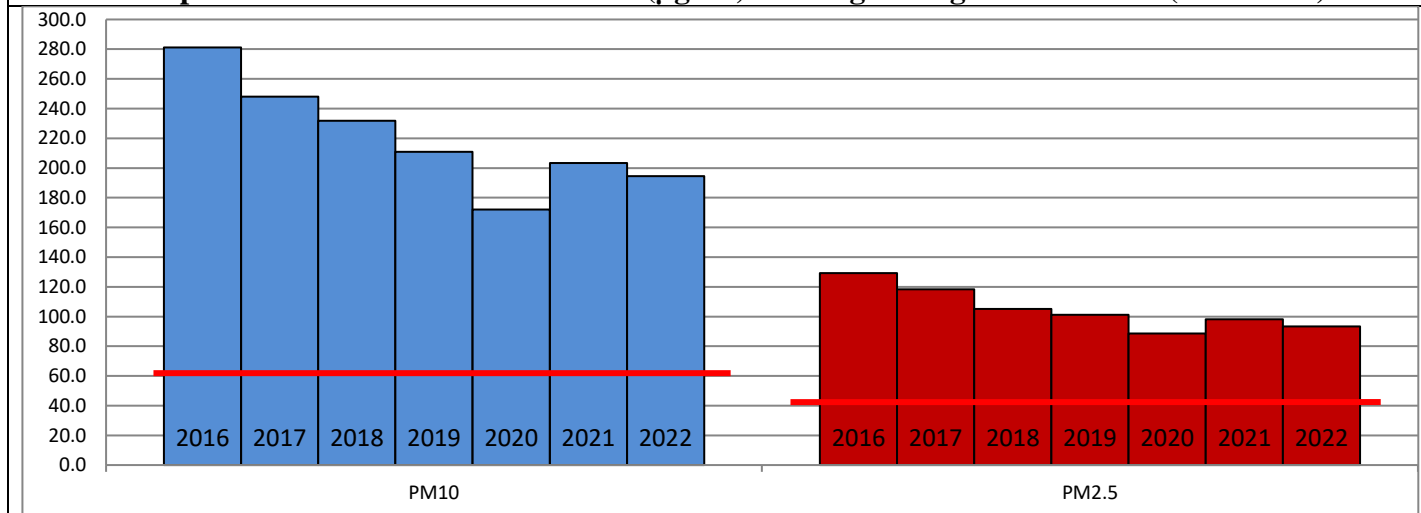
	Air Quality	AQI Value	Prominent Pollutant
Delhi	Very Poor	314 ↑	PM <sub>2.5</sub>
Faridabad	Poor	297 ↑	PM <sub>2.5</sub>
Ghaziabad	Poor	255 ↑	PM <sub>10</sub>
Greater Noida	Poor	296 ↑	PM <sub>10</sub> , PM <sub>2.5</sub>
Gurugram	Poor	260 ↑	PM <sub>2.5</sub>
Noida	Poor	281 ↑	PM <sub>10</sub>

\*Data available for 36 stations in Delhi today. # ↑ ↓ arrows indicate a decrease/increase as compared to the value on the previous day.

#### Comparative status of AQI - Delhi from 01 January to 09 December 2016-2022

Category	Year	2016	2017	2018	2019	2020	2021	2022	2016	2017	2018	2019	2020	2021	2022
	No. of days	332	343	343	343	344	343	343							
Good (0–50)		0	2	0	2	5	1	3							
Satisfactory (51–100)		24	45	53	59	95	81	65	110	151	158	179	226	197	160
Moderate (101–200)		86	104	105	118	126	115	92							
Poor (201–300)		119	107	111	100	65	73	128							
Very Poor (301–400)		81	77	62	47	41	55	50	222	192	185	164	118	146	183
Severe (>401)		22	8	12	17	12	18	5							

#### Comparative status of PM<sub>10</sub> and PM<sub>2.5</sub> (µg/m<sup>3</sup>) running average – Till Dec 07 (2016-2022)



#### Hotspots for Today:

\*Details given overleaf

Delhi	NSIT Dwarka, Jahangirpuri, Nehru Nagar, Anand Vihar, R K Puram	Ghaziabad	Vasundhara, Loni
Faridabad	Sector-16A, New Industrial Town	Greater Noida	Knowledge Park-V
Gurugram	Teri Gram, Sector-51	Noida	Sector – 62

#### Forecast by IITM (Delhi):

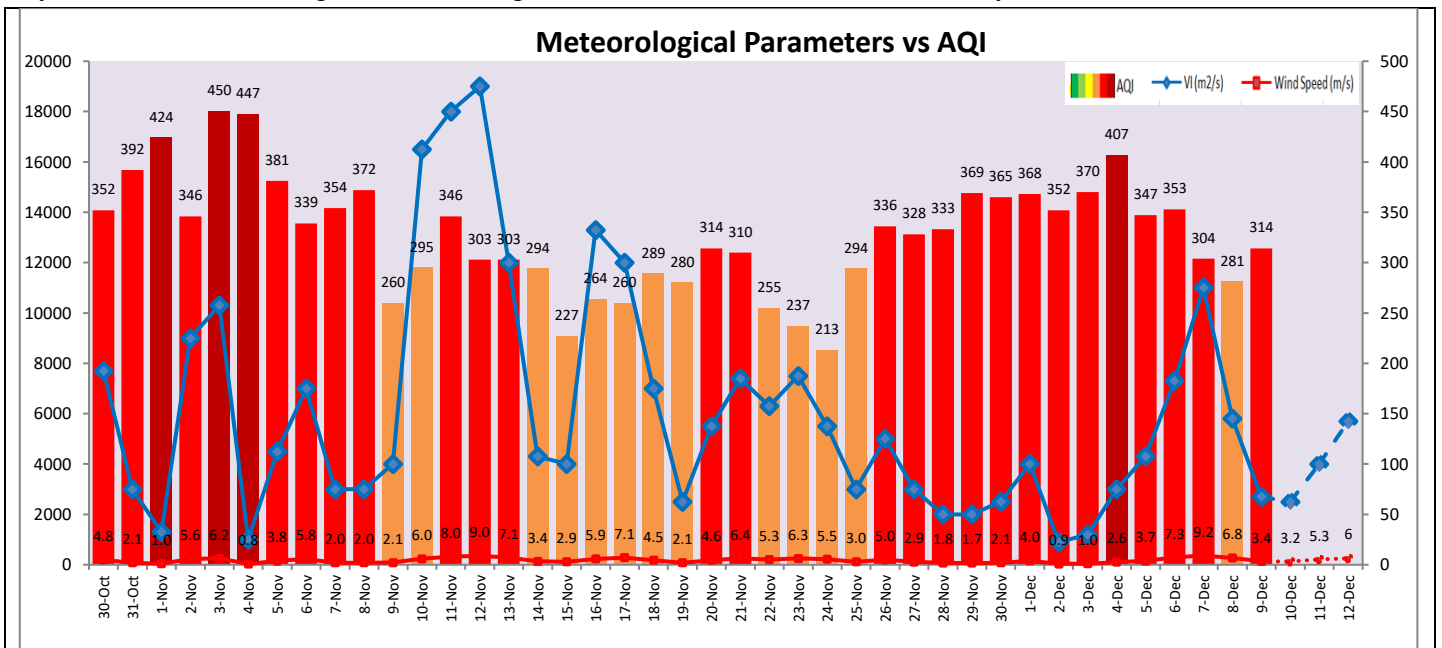
	Dec 10, 2022		Dec 11, 2022- Dec 12, 2022	
	Concentration	AQI Category	Concentration	AQI Category
PM <sub>10</sub>	284	Poor	314	Poor
PM <sub>2.5</sub>	150	Very Poor	170	Very Poor

### Wind Forecast for Delhi:

	Wind speed (at surface) in km/h		Wind speed (at 900 m) in km/h	Wind Direction	
	As per IMD (range)	As per windy.com (at 16:00 hrs.)	As per windy.com (at 16:00hrs)	As per IMD	As per windy.com at 900m
Dec 10, 2022	04-08	10	23	N/NW	N
Dec 11, 2022	08-14	10	23	NW	NW
Dec 12, 2022	08-12	10	27	NW	NW

### IMD Alert for Tomorrow (10.12.2022):

The air quality is likely to remain in lower end of Very Poor category on 10.12.2022. The predominant surface wind is likely to be coming from North/Northwest direction in Delhi with wind speed 04-08 kmph, mainly clear sky and mist/shallow fog in the morning tomorrow. Ventilation index is likely to be 2,500 m<sup>2</sup>/s.



### Hotspots for Today

City	Station Name	AQI value	Air Quality	Prominent Pollutant
Delhi	NSIT Dwarka, Delhi - CPCB	390	Very Poor	PM <sub>2.5</sub>
	Jahangirpuri, Delhi - DPCC	360	Very Poor	PM <sub>2.5</sub>
	Nehru Nagar, Delhi - DPCC	351	Very Poor	PM <sub>2.5</sub>
	Anand Vihar, Delhi - DPCC	345	Very Poor	PM <sub>2.5</sub>
	R K Puram, Delhi - DPCC	342	Very Poor	PM <sub>2.5</sub>
Faridabad	Sector- 16A, Faridabad - HSPCB	307	Very Poor	PM <sub>2.5</sub>
	New Industrial Town, Faridabad - HSPCB	299	Poor	PM <sub>10</sub>
Gurugram	Sector-51, Gurugram - HSPCB	286	Poor	PM <sub>2.5</sub>
	Teri Gram, Gurugram - HSPCB	262	Poor	PM <sub>2.5</sub>
Ghaziabad	Vasundhara, Ghaziabad - UPPCB	308	Very Poor	PM <sub>10</sub>
	Loni, Ghaziabad - UPPCB	272	Poor	PM <sub>2.5</sub>
Greater Noida	Knowledge Park - V, Greater Noida - UPPCB	296	Poor	PM <sub>10</sub>
Noida	Sector - 62, Noida - IMD	412	Severe	PM <sub>10</sub>