



# Central Pollution Control Board

## Air Quality Status for Delhi &NCR

Dated – February 09, 2022



### Current Air Quality Status:

#### Air Quality Index (AQI) (Average of past 24 hours)

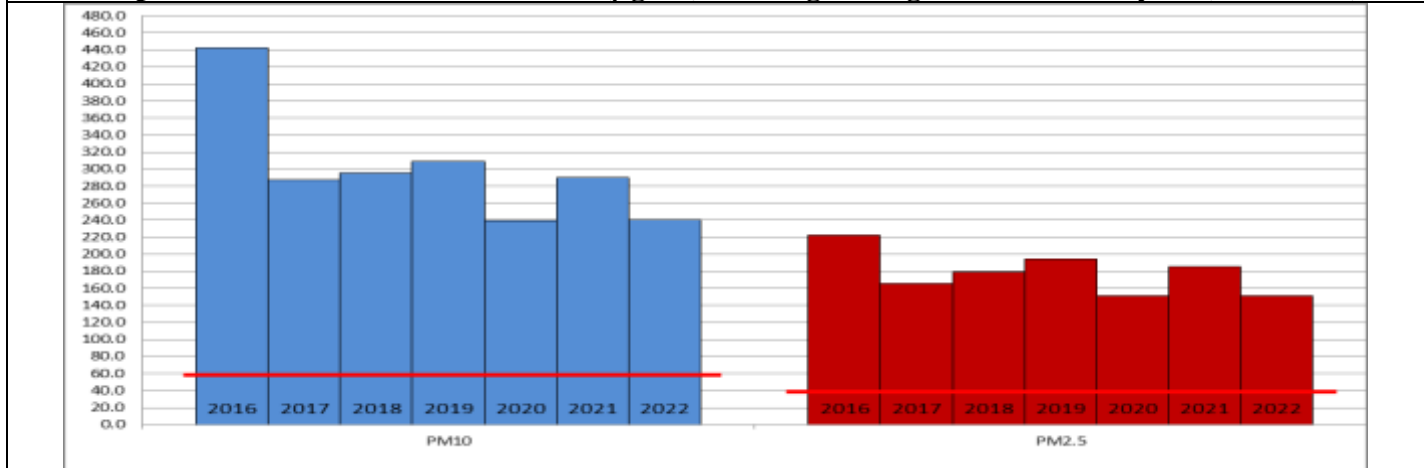
	Air Quality	AQI Value	Prominent Pollutant
Delhi	Poor	227↓	PM <sub>10</sub> , PM <sub>2.5</sub>
Faridabad	Poor	225↓	PM <sub>2.5</sub>
Ghaziabad	Poor	243↓	PM <sub>2.5</sub>
Greater Noida	Moderate	166↓	PM <sub>10</sub> , PM <sub>2.5</sub>
Gurugram	Poor	226↓	PM <sub>2.5</sub>
Noida	Moderate	194↓	PM <sub>10</sub> , PM <sub>2.5</sub>

\*Data available for 37 stations in Delhi today. # ↓ ↑ arrows indicate increase/decrease as compared to value on the previous day

#### Comparative status of AQI - Delhi from 01 January to 08 February 2016-2022

Category	Year	2016	2017	2018	2019	2020	2021	2022	2016	2017	2018	2019	2020	2021	2022
	No. of days	40	40	40	40	40	40	40							
Good (0–50)		0	0	0	0	0	0	0							
Satisfactory (51–100)		0	0	0	0	0	0	2	0	3	0	5	3	4	6
Moderate (101–200)		0	3	0	5	3	4	4							
Poor (201–300)		6	13	18	11	23	10	17							
Very Poor (301–400)		28	24	19	17	12	20	16	40	37	40	35	37	36	34
Severe (>401)		6	0	3	7	2	6	1							

#### Comparative status of PM<sub>2.5</sub> and PM<sub>10</sub> (µg/m<sup>3</sup>) running average – Till February 07 (2016-2022)



#### Hotspots for Today:

\*Details given overleaf

Delhi	Anand Vihar, Nehru Nagar, Jahangirpuri, Punjabi Bagh, Wazirpur	Gurugram	Teri Gram, Sector-51
Faridabad	Sector-11, New Industrial Town	Greater Noida	Knowledge Park – V
Ghaziabad	Indirapuram, Loni	Noida	Sector -62, Sector - 116

#### Forecast by IITM:

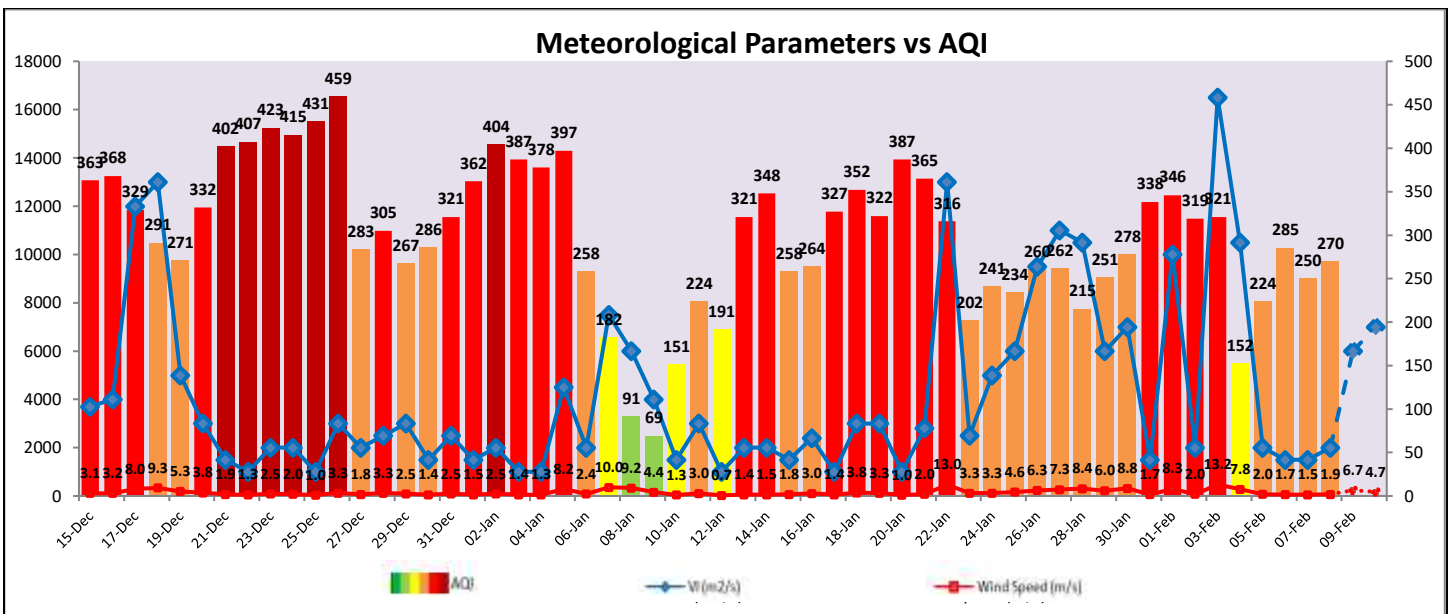
Parameters	February 10, 2022		February 11, 2022- February 12, 2022	
	Concentration	AQI Category	Concentration	AQI Category
PM <sub>10</sub>	168	Moderate	223	Moderate
PM <sub>2.5</sub>	94	Poor	126	Very Poor

▪ **Wind Forecast for Delhi:**

	Wind speed (at surface) in km/h		Wind speed (at 900 m) in km/h	Wind Direction	
	As per IMD (at 17:30 hrs.)	As per windy.com (at 16:00 hrs.)	As per windy.com (at 16:00hrs)	As per IMD (at 17:30hrs.)	As per windy.com at 900m
February 10, 2022	12	10	28	NW	NW
February 11, 2022	18	14	44	NW	NW
February 12, 2022	16	07	27	NW	NW

▪ **IMD Alert for Tomorrow (10.02.2022):**

The air quality is likely to remain in Moderate category on 10.02.2022 and 11.02.2022. The predominant surface wind is likely to be coming from North direction of Delhi with wind speed 06-12 kmph, partly cloudy sky and shallow to moderate fog in the morning on 10.02.2022. The ventilation index is likely to be 8,800 m<sup>2</sup>/s.



▪ **Hotspots for Today**

\* Data is of 5pm as 4pm data was not available

City	Station Name	AQI value	Air Quality	Prominent Pollutant
Delhi	Anand Vihar, Delhi - DPCC	279	Poor	PM <sub>10</sub>
	Jahangirpuri, Delhi - DPCC	277	Poor	PM <sub>2.5</sub>
	Nehru Nagar, Delhi - DPCC	274	Poor	PM <sub>2.5</sub>
	Punjabi Bagh, Delhi - DPCC	272	Poor	PM <sub>2.5</sub>
	Wazirpur, Delhi - DPCC	263	Poor	PM <sub>2.5</sub>
Faridabad	New Industrial Town, Faridabad - HSPCB	253	Poor	PM <sub>2.5</sub>
	Sector 11, Faridabad - HSPCB	241	Poor	PM <sub>2.5</sub>
Gurugram	Teri Gram, Gurugram - HSPCB	286	Poor	PM <sub>2.5</sub>
	Sector-51, Gurugram - HSPCB	241	Poor	PM <sub>2.5</sub>
Ghaziabad	Loni, Ghaziabad - UPPCB	344	Very Poor	PM <sub>2.5</sub>
	Indirapuram, Ghaziabad - UPPCB	230	Poor	PM <sub>2.5</sub>
Greater Noida	Knowledge Park - V, Greater Noida - UPPCB	187	Moderate	PM <sub>10</sub>
Noida	Sector - 62, Noida - IMD	220	Poor	PM <sub>10</sub>
	Sector-116, Noida - UPPCB	187	Moderate	PM <sub>2.5</sub>