



Central Pollution Control Board

Air Quality Status for Delhi & NCR

Dated – December 08, 2022



Current Air Quality Status:

Air Quality Index (AQI) (Average of past 24 hours)

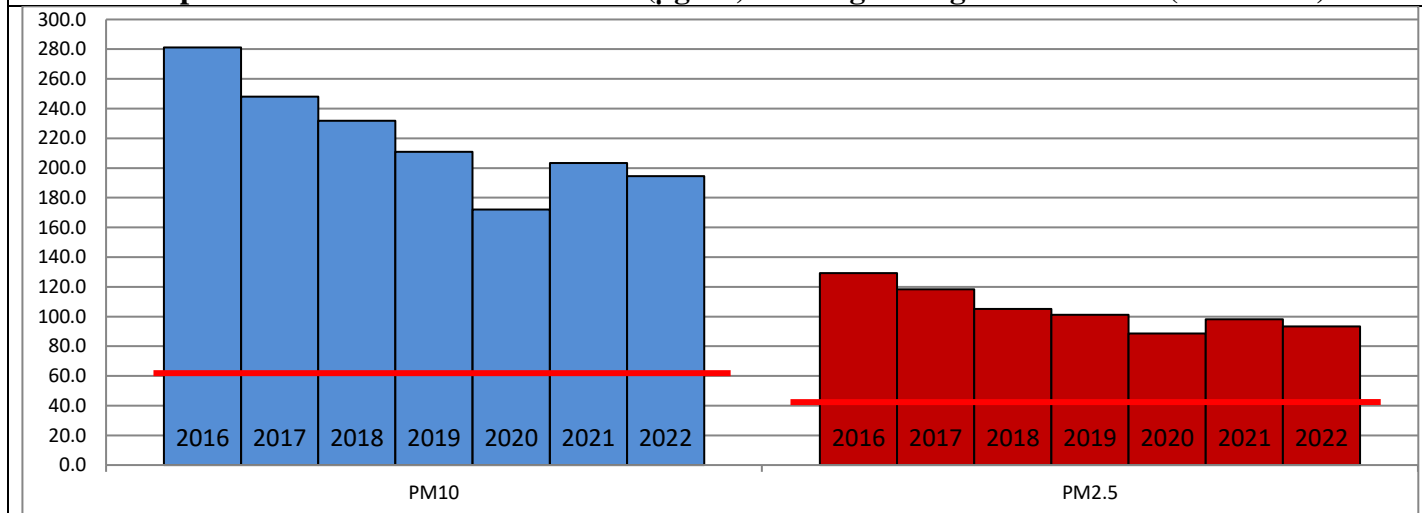
	Air Quality	AQI Value	Prominent Pollutant
Delhi	Poor	281 ↓	PM _{2.5}
Faridabad	Poor	216 ↓	PM _{2.5}
Ghaziabad	Poor	230 ↑	PM _{2.5}
Greater Noida	Poor	238 ↓	PM _{2.5}
Gurugram	Poor	219 ↑	PM _{2.5}
Noida	Poor	239 ↓	PM _{2.5}

*Data available for 36 stations in Delhi today. # ↓ ↑ arrows indicate a decrease/increase as compared to the value on the previous day.

Comparative status of AQI - Delhi from 01 January to 08 December 2016-2022

Category	Year	2016	2017	2018	2019	2020	2021	2022	2016	2017	2018	2019	2020	2021	2022
	No. of days	331	342	342	342	343	342	342							
Good (0–50)		0	2	0	2	5	1	3							
Satisfactory (51–100)		24	45	53	59	95	81	65	110	151	158	179	226	197	160
Moderate (101–200)		86	104	105	118	126	115	92							
Poor (201–300)		119	107	111	100	65	72	128							
Very Poor (301–400)		81	76	61	46	40	55	49	221	191	184	163	117	145	182
Severe (>401)		21	8	12	17	12	18	5							

Comparative status of PM₁₀ and PM_{2.5} (µg/m³) running average – Till Dec 07 (2016-2022)



Hotspots for Today:

*Details given overleaf

Delhi	NSIT Dwarka, Shadipur, Burari Crossing, Jahangirpuri, Nehru Nagar	Ghaziabad	Vasundhara Sanjay Nagar
Faridabad	Sector-16A	Greater Noida	Knowledge Park-III
Gurugram	Teri Gram	Noida	Sector – 62

Forecast by IITM (Delhi):

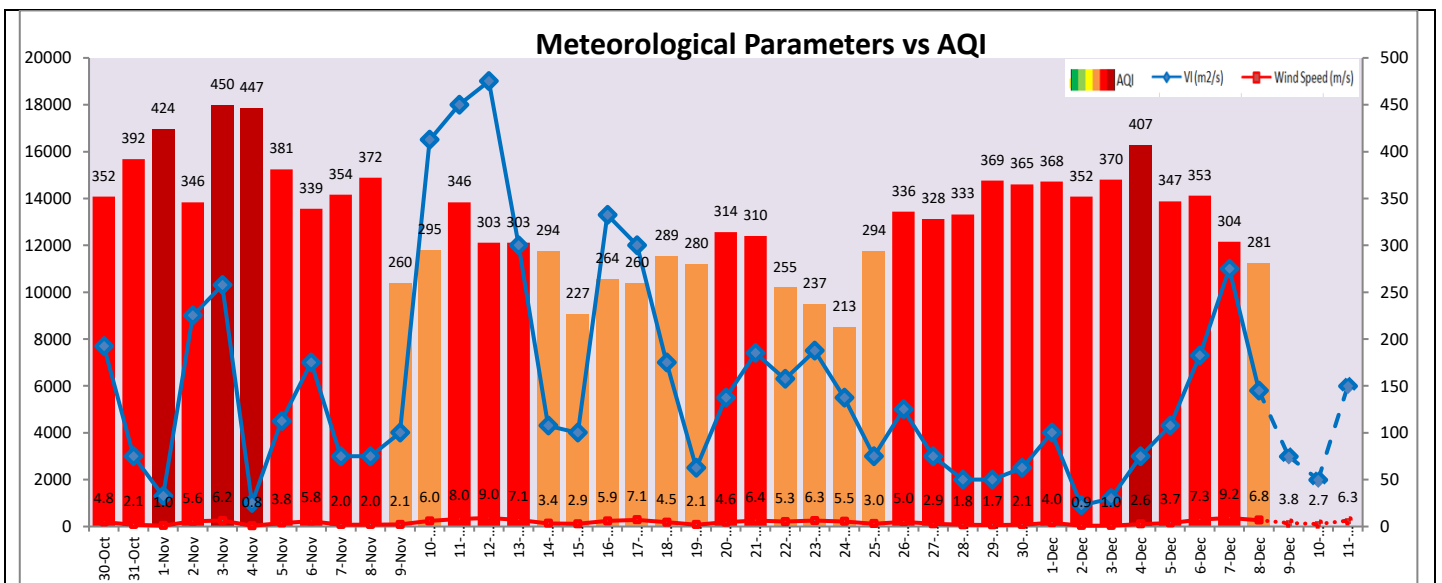
	Dec 09, 2022		Dec 10, 2022- Dec 11, 2022	
	Concentration	AQI Category	Concentration	AQI Category
PM ₁₀	161	Moderate	152	Moderate
PM _{2.5}	98	Poor	92	Poor

Wind Forecast for Delhi:

	Wind speed (at surface) in km/h		Wind speed (at 900 m) in km/h	Wind Direction	
	As per IMD (range)	As per windy.com (at 16:00 hrs.)	As per windy.com (at 16:00hrs)	As per IMD	As per windy.com at 900m
Dec 09, 2022	06-08	07	19	NW	N
Dec 10, 2022	08-10	10	20	NW	N
Dec 11, 2022	12-14	09	25	NW	NW

IMD Alert for Tomorrow (09.12.2022):

The air quality is likely to deteriorate but remain in Very Poor category from 09.12.2022 to 11.12.2022. The predominant surface wind is likely to be coming from Northwest directions in Delhi with wind speed 06-08 kmph, mainly clear sky and mist/shallow fog in the morning tomorrow. Ventilation index is likely to be 3,000 m²/s.



Hotspots for Today

City	Station Name	AQI value	Air Quality	Prominent Pollutant
Delhi	NSIT Dwarka, Delhi - CPCB	371	Very Poor	PM _{2.5}
	Shadipur, Delhi - CPCB	321	Very Poor	PM _{2.5}
	Burari Crossing, Delhi - IMD	316	Very Poor	PM _{2.5}
	Jahangirpuri, Delhi - DPCC	313	Very Poor	PM _{2.5}
	Nehru Nagar, Delhi - DPCC	313	Very Poor	PM _{2.5}
Faridabad	Sector- 16A, Faridabad - HSPCB	272	Poor	PM _{2.5}
Gurugram	Teri Gram, Gurugram - HSPCB	236	Poor	PM _{2.5}
Ghaziabad	Vasundhara, Ghaziabad - UPPCB	270	Poor	PM _{2.5}
	Sanjay Nagar, Ghaziabad - UPPCB	249	Poor	PM _{2.5}
Greater Noida	Knowledge Park - III, Greater Noida - UPPCB	242	Poor	PM _{2.5}
Noida	Sector - 62, Noida - IMD	293	Poor	PM _{2.5}