



# Central Pollution Control Board

Air Quality Status for Delhi & NCR

Dated – November 08, 2021



## Current Air Quality Status:

### Air Quality Index (AQI) (Average of past 24 hours)

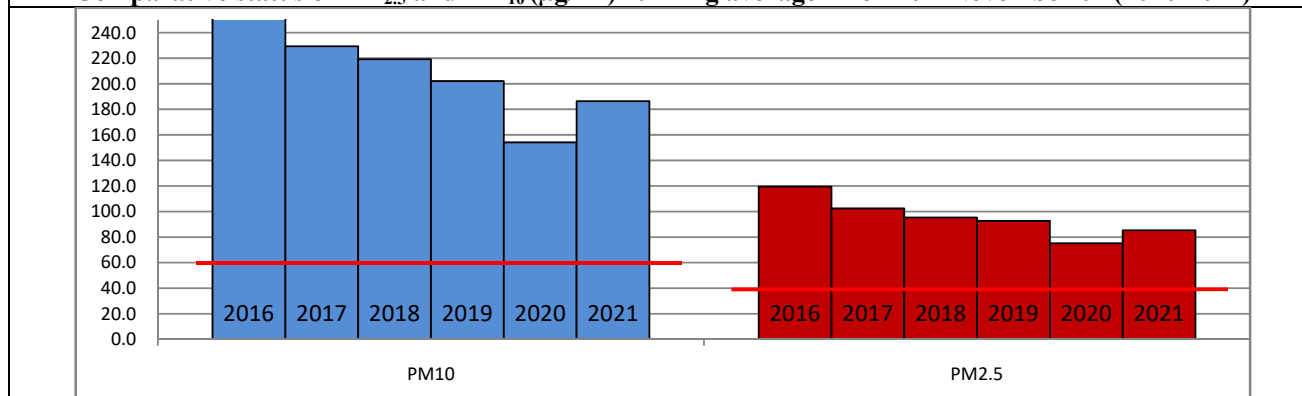
	Air Quality	AQI Value	Prominent Pollutant
Delhi	Very Poor	390	PM <sub>10</sub> , PM <sub>2.5</sub>
Faridabad	Very Poor	360	PM <sub>10</sub> , PM <sub>2.5</sub>
Ghaziabad	Severe	437	PM <sub>2.5</sub>
Greater Noida	Very Poor	328	PM <sub>2.5</sub>
Gurugram	Very Poor	369	PM <sub>2.5</sub>
Noida	Severe	412	PM <sub>10</sub> , PM <sub>2.5</sub>

\*Data available for 37 stations in Delhi today. arrows indicate increase/decrease as compared to value on the previous day

### Comparative status of AQI - Delhi from 01 January to 08 November 2016-2021

Category	Year	2016	2017	2018	2019	2020	2021	2016	2017	2018	2019	2020	2021
	No. of days	301	312	312	312	313	312						
Good (0–50)		0	2	0	2	5	1						
Satisfactory (51–100)		25	45	53	58	95	72	108	150	158	175	224	197
Moderate (101–200)		83	103	105	115	124	124						
Poor (201–300)		116	102	104	89	56	69						
Very Poor (301–400)		62	57	42	36	27	37	193	162	154	137	89	115
Severe (>401)		15	3	8	12	6	9						

### Comparative status of PM<sub>2.5</sub> and PM<sub>10</sub> (µg/m<sup>3</sup>) running average - Delhi till November 07 (2016-2021)



\* The PM values are 24 hourly averages (6 am to 6 am)

### Hotspots for Today:

\*Details given overleaf

Delhi	Jahangirpuri, Anand Vihar, Wazirpur, Alipur, Narela	Greater Noida	Knowledge Park - V
Faridabad	Sector 11, Sector 16 A	Gurugram	Sector 51, Vikas Sadan
Ghaziabad	Loni, Sanjay Nagar	Noida	Sector 116, Sector 62

### Forecast by IITM:

Parameters	November 09, 2021		November 10, 2021– November 11, 2021	
	Concentration	AQI Category	Concentration	AQI Category
PM <sub>10</sub>	313	Poor	278	Poor
PM <sub>2.5</sub>	192	Very Poor	171	Very Poor

▪ **Wind Forecast for Delhi:**

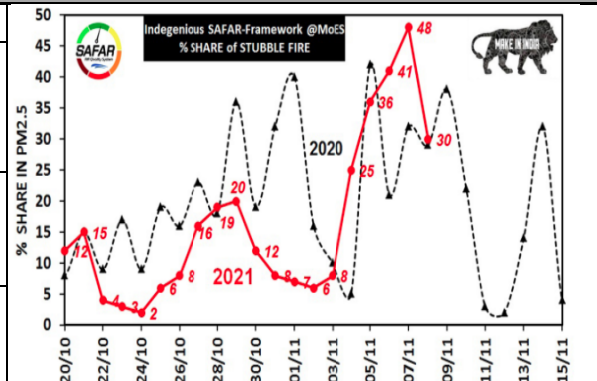
Dates	Wind speed (at surface) in km/h		Wind speed (at 900 m) in km/h	Wind Direction	
	As per IMD (at 17:30 hrs.)	As per windy.com (at 16:00 hrs.)	As per windy.com (at 16:00hrs)	As per IMD (at 17:30hrs.)	As per windy.com at 900m
November 09, 2021	06	09	28	NW	NW
November 10, 2021	CALM	10	28	-	NW
November 11, 2021	08	09	29	NW	NW

▪ **IMD Alert for Tomorrow (09.11.2021):**

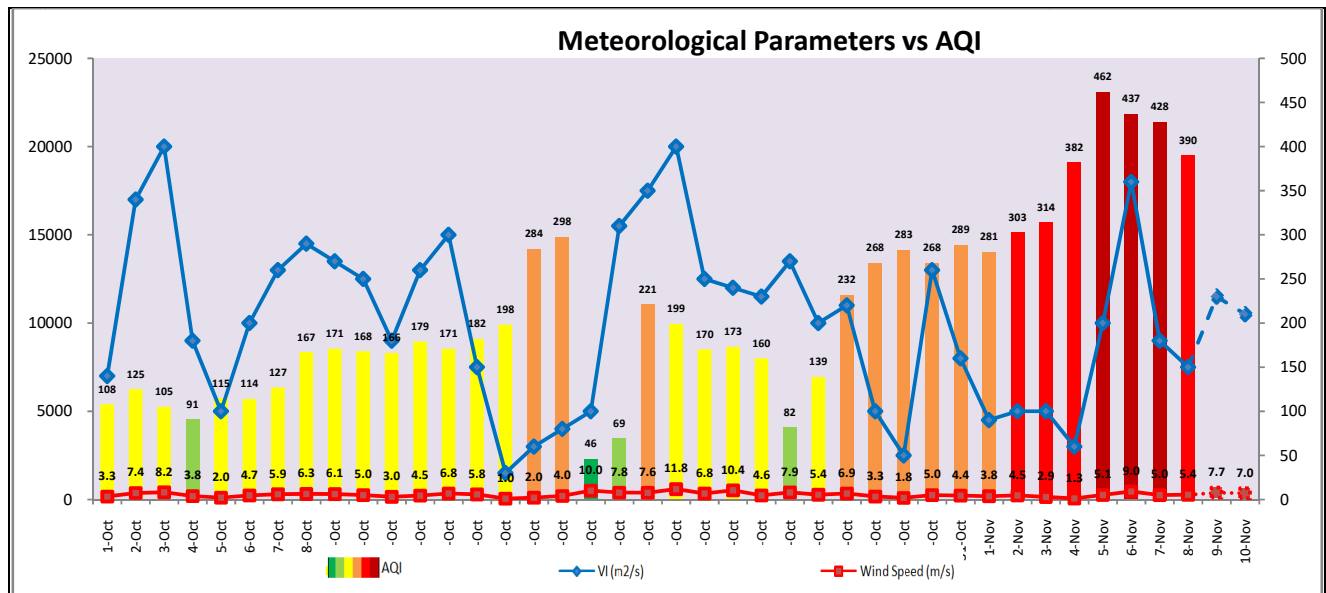
The air quality is likely to remain in Very Poor category on 09.11.2021 and 10.11.2021. The predominant surface wind is likely to be coming from Northwest directions of Delhi with wind speed of 06-16 kmph, partly cloudy sky and shallow fog in the morning on 09.11.2021. Ventilation index is likely to be 11,500 m<sup>2</sup>/s.

▪ **Active Fire Events (AFE)**

Date	Punjab		Haryana	
	Nos. on the day	Total since September 21	Nos. on the day	Total since September 21
07.11.2021	5199	38078	182	4398
07.11.2020	54911	63980	150	3138



The contribution of biomass burning in PM<sub>2.5</sub> concentration is likely to be approximately 30% on 08.11.2021 as winds are favourable for transportation of pollutants.



▪ Hotspots for Today

City	Station Name	AQI value	Air Quality	Prominent Pollutant
Delhi	Jahangirpuri, Delhi - DPCC	442	Severe	PM <sub>2.5</sub>
	Anand Vihar, Delhi - DPCC	431	Severe	PM <sub>10</sub>
	Wazirpur, Delhi - DPCC	426	Severe	PM <sub>2.5</sub>
	Alipur, Delhi - DPCC	424	Severe	PM <sub>2.5</sub>
	Narela, Delhi - DPCC	422	Severe	PM <sub>2.5</sub>
Faridabad	Sector 30, Faridabad - HSPCB	408	Severe	PM <sub>2.5</sub>
	Sector- 16A, Faridabad - HSPCB	395	Very Poor	PM <sub>2.5</sub>
Gurugram	Sector-51, Gurugram - HSPCB	384	Very Poor	PM <sub>2.5</sub>
	Vikas Sadan, Gurugram - HSPCB	375	Very Poor	PM <sub>2.5</sub>
Ghaziabad	Loni, Ghaziabad - UPPCB	460	Severe	PM <sub>2.5</sub>
	Sanjay Nagar, Ghaziabad - UPPCB	433	Severe	PM <sub>2.5</sub>
Greater Noida	Knowledge Park - V, Greater Noida - UPPCB	339	Very Poor	PM <sub>2.5</sub>
Noida	Sector - 62, Noida - IMD	430	Severe	PM <sub>10</sub>
	Sector-116, Noida - UPPCB	413	Severe	PM <sub>2.5</sub>