



Central Pollution Control Board

Air Quality Status for Delhi & NCR

Dated – June 08, 2022



Current Air Quality Status:

Air Quality Index (AQI) (Average of past 24 hours)

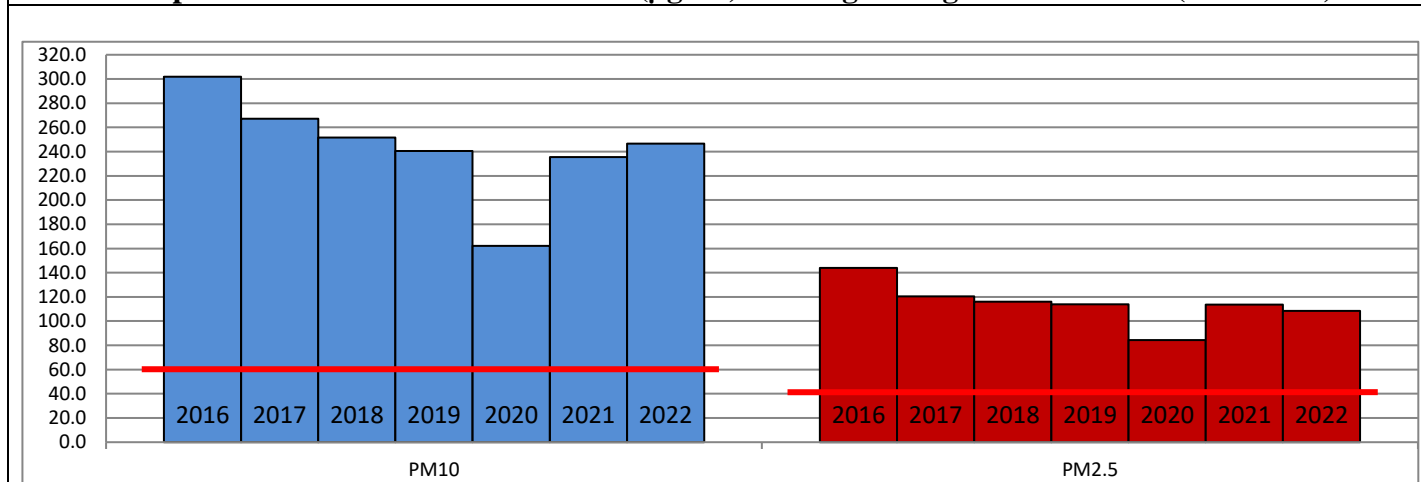
	Air Quality	AQI Value	Prominent Pollutant
Delhi	Very Poor	346 ↑	PM ₁₀
Faridabad	Very Poor	389 ↑	PM _{2.5} , PM ₁₀
Ghaziabad	Very Poor	375 ↑	PM ₁₀
Greater Noida	Very Poor	382 ↑	PM ₁₀
Gurugram	Very Poor	396 ↑	PM _{2.5} , PM ₁₀
Noida	Very Poor	399 ↑	PM ₁₀

*Data available for 34 stations in Delhi today. # ↑ ↓ arrows indicate a decrease/increase as compared to the value on the previous day.

Comparative status of AQI - Delhi from 01 January to 08 June 2016-2022

Category	Year	2016	2017	2018	2019	2020	2021	2022	2016	2017	2018	2019	2020	2021	2022
	No. of days	155	159	159	159	160	159	159							
Good (0–50)		0	0	0	0	1	0	0							
Satisfactory (51–100)		0	0	1	2	29	6	4	16	38	52	63	106	66	38
Moderate (101–200)		16	38	51	61	76	60	34							
Poor (201–300)		80	85	77	63	37	55	100							
Very Poor (301–400)		53	36	27	26	15	32	20	139	121	107	96	54	93	121
Severe (>401)		6	0	3	7	2	6	1							

Comparative status of PM_{2.5} and PM₁₀ (µg/m³) running average – Till June 07 (2016-2022)



Hotspots for Today:

*Details given overleaf

Delhi	Mundka, Chandni Chowk, Anand Vihar, JLN Stadium, Major Dhyani Chand National Stadium	Gurugram	Teri Gram
Faridabad	Sector-11	Greater Noida	Knowledge Park-III
Ghaziabad	Loni, Vasundhara	Noida	Sector-125, Sector-1

Forecast by IITM (Delhi):

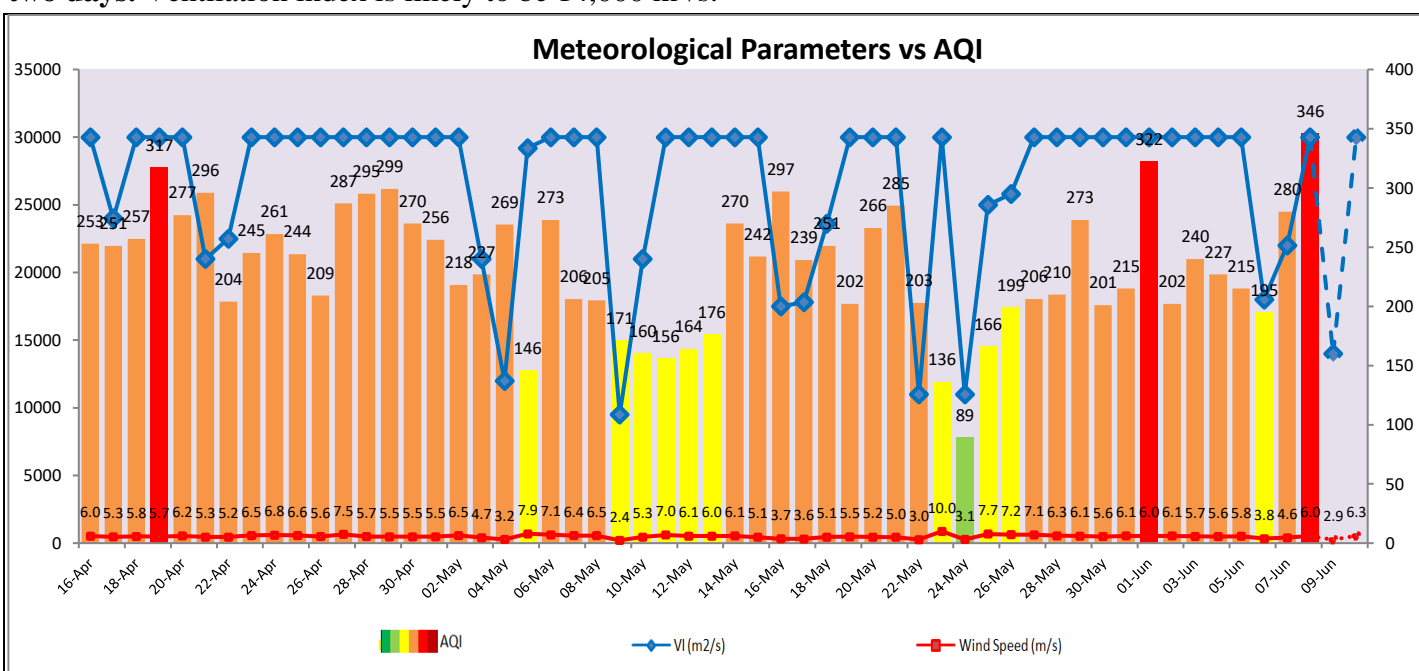
Parameters	June 09, 2022		June 10, 2022- June 11, 2022	
	Concentration	AQI Category	Concentration	AQI Category
PM ₁₀	378	Very Poor	336	Poor
PM _{2.5}	87	Moderate	77	Moderate

Wind Forecast for Delhi:

	Wind speed (at surface) in km/h		Wind speed (at 900 m) in km/h	Wind Direction	
	As per IMD (at 17:30 hrs.)	As per windy.com (at 16:00 hrs.)	As per windy.com (at 16:00hrs)	As per IMD (at 17:30hrs.)	As per windy.com at 900m
June 09, 2022	15	12	16	W	W
June 10, 2022	12	19	31	W	W
June 11, 2022	15	23	36	WNW	W

IMD Alert for Tomorrow (09.06.2022):

The air quality over Delhi-NCT is likely to remain in Very Poor category on 09.06.2022. The predominant surface wind is likely to be coming from Northwest/West direction in Delhi with wind speed 15-20 kmph, partly cloudy sky, and strong surface winds (speed 20-30 kmph) during the day tomorrow. **Long range transported dust will impact air quality over parts of Rajasthan, Gujarat, MP and NCR during next two days.** Ventilation index is likely to be 14,000 m²/s.



Hotspots for Today

City	Station Name	AQI value	Air Quality	Prominent Pollutant
Delhi	Mundka, Delhi - DPCC	425	Severe	PM ₁₀
	Chandni Chowk, Delhi - IITM	404	Severe	PM ₁₀
	Anand Vihar, Delhi - DPCC	402	Severe	PM ₁₀
	Jawaharlal Nehru Stadium, Delhi - DPCC	393	Very Poor	PM ₁₀
	Major Dhyan Chand National Stadium, Delhi -DPCC	391	Very Poor	PM ₁₀
Faridabad	Sector 11, Faridabad - HSPCB	416	Severe	PM _{2.5}
Gurugram	Teri Gram, Gurugram - HSPCB	444	Severe	PM ₁₀
Ghaziabad	Loni, Ghaziabad - UPPCB	451	Severe	PM ₁₀
	Vasundhara, Ghaziabad - UPPCB	394	Very Poor	PM ₁₀
Greater Noida	Knowledge Park - III, Greater Noida - UPPCB	408	Severe	PM ₁₀
Noida	Sector - 125, Noida - UPPCB	422	Severe	PM ₁₀
	Sector-1, Noida - UPPCB	417	Severe	PM ₁₀