



Central Pollution Control Board

Air Quality Status for Delhi & NCR

Dated – November 07, 2021



Current Air Quality Status:

Air Quality Index (AQI) (Average of past 24 hours)

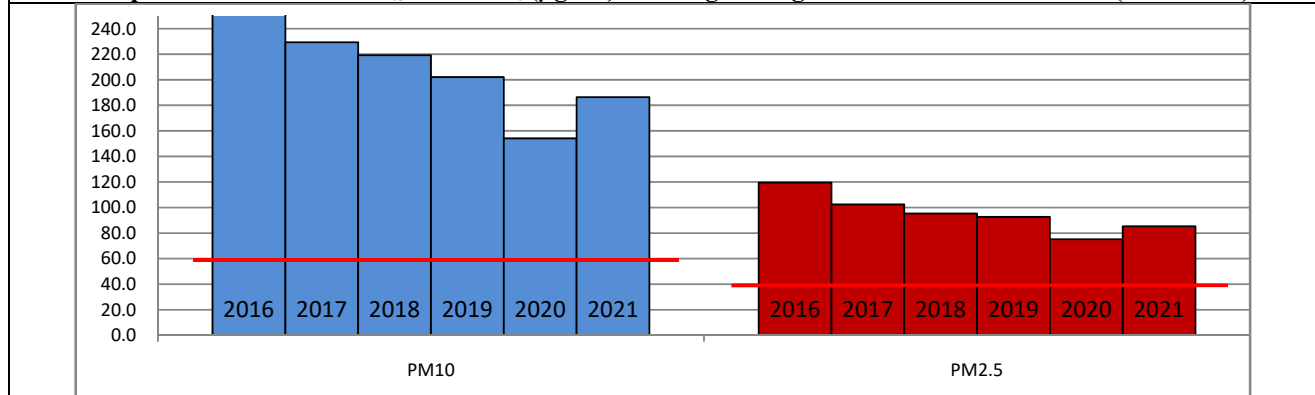
	Air Quality	AQI Value	Prominent Pollutant
Delhi	Severe	428 ↓	PM _{2.5}
Faridabad	Very Poor	372 ↓	PM ₁₀ , PM _{2.5}
Ghaziabad	Severe	455 ↓	PM _{2.5}
Greater Noida	Very Poor	365 ↓	PM _{2.5}
Gurugram	Severe	419 ↓	PM _{2.5}
Noida	Severe	446 ↓	PM ₁₀ , PM _{2.5}

*Data available for 37 stations in Delhi today. # ↑ ↓ arrows indicate increase/decrease as compared to value on the previous day

Comparative status of AQI - Delhi from 01 January to 07 November 2016-2021

Category	Year	2016	2017	2018	2019	2020	2021	2016	2017	2018	2019	2020	2021
	No. of days	300	311	311	311	312	311						
Good (0–50)		0	2	0	2	5	1						
Satisfactory (51–100)		25	45	53	58	95	72	108	150	158	175	224	108
Moderate (101–200)		83	103	105	115	124	124						
Poor (201–300)		116	102	104	89	56	69						
Very Poor (301–400)		62	57	41	35	27	36	192	161	153	136	88	192
Severe (>401)		14	2	8	12	5	9						

Comparative status of PM_{2.5} and PM₁₀ (µg/m³) running average - Delhi till November 06 (2016-2021)



Hotspots for Today:

*Details given overleaf

Delhi	Jahangirpuri, Rohini, Vivek Vihar, Wazirpur, Bawana	Greater Noida	Knowledge Park - V
Faridabad	Sector 11, Sector 30	Gurugram	Sector 51, Teri Gram
Ghaziabad	Loni, Sanjay Nagar	Noida	Sector 125, Sector 62

Forecast by IITM:

Parameters	November 08, 2021		November 09, 2021– November 10, 2021	
	Concentration	AQI Category	Concentration	AQI Category
PM ₁₀	339	Poor	254	Poor
PM _{2.5}	225	Very Poor	169	Very Poor

▪ **Wind Forecast for Delhi:**

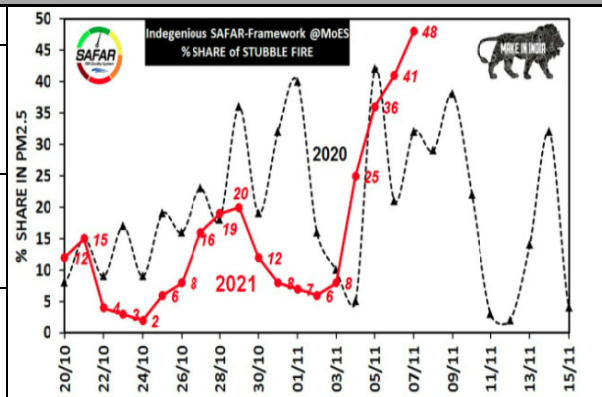
Dates	Wind speed (at surface) in km/h		Wind speed (at 900 m) in km/h	Wind Direction	
	As per IMD (at 17:30 hrs.)	As per windy.com (at 16:00 hrs.)	As per windy.com (at 16:00hrs)	As per IMD (at 17:30hrs.)	As per windy.com at 900m
November 08, 2021	16	11	28	NW	NW
November 09, 2021	20	10	27	NW	NW
November 10, 2021	20	10	26	NW	NW

▪ **IMD Alert for Tomorrow (08.11.2021):**

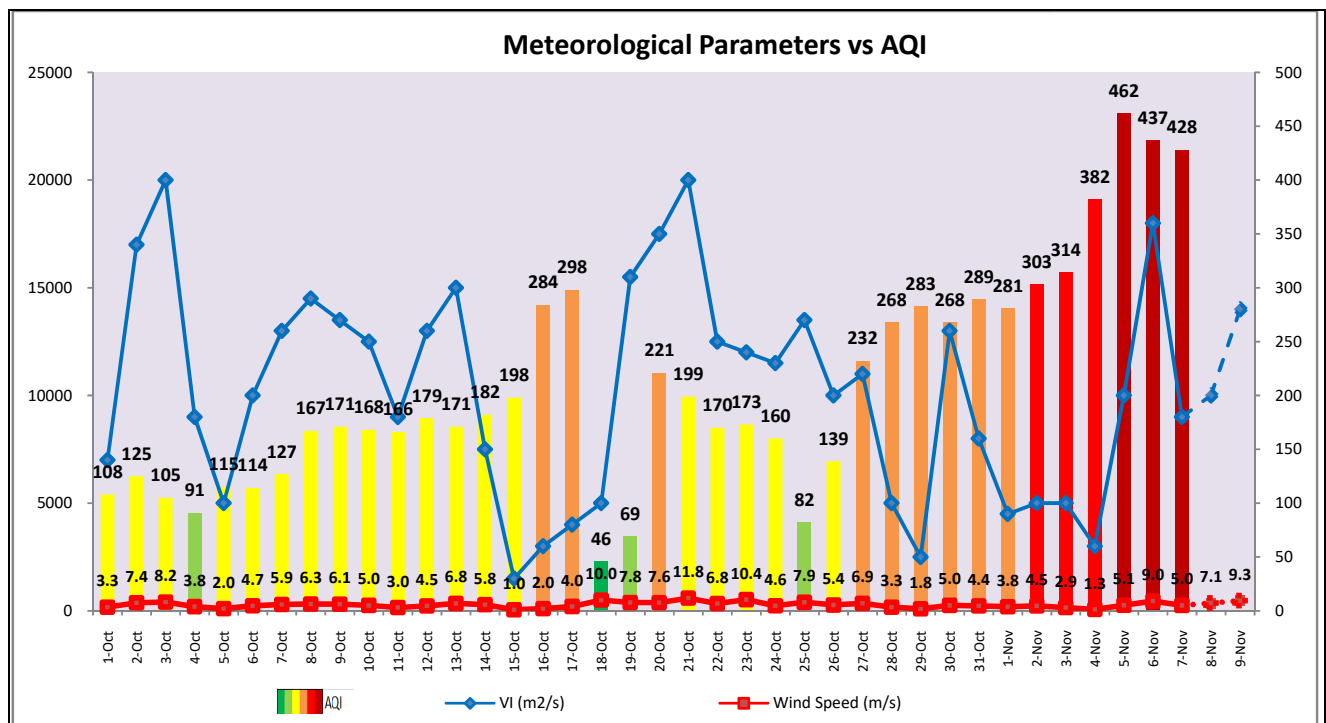
The air quality is likely to improve further but remain in Very Poor category tomorrow. The predominant surface wind is likely to be coming from Northwest directions of Delhi with wind speed of 04-16 kmph, partly cloudy sky and mist in the morning. Ventilation index is likely to be 10,000 m²/s.

▪ **Active Fire Events (AFE) s**

Date	Punjab		Haryana	
	Nos. on the day	Total since September 21	Nos. on the day	Total since September 21
06.11.2021	3942	32879	219	4216
06.11.2020	5382	58489	151	2988



The contribution of biomass burning in PM_{2.5} concentration is likely to be approximately 30% on 07.11.2021 as winds are favourable for transportation of pollutants.



▪ Hotspots for Today

City	Station Name	AQI value	Air Quality	Prominent Pollutant
Delhi	Jahangirpuri, Delhi - DPCC	465	Severe	PM _{2.5}
	Rohini, Delhi - DPCC	456	Severe	PM ₁₀
	Vivek Vihar, Delhi - DPCC	456	Severe	PM _{2.5}
	Wazirpur, Delhi - DPCC	456	Severe	PM _{2.5}
	Bawana, Delhi - DPCC	454	Severe	PM _{2.5}
Faridabad	Sector 11, Faridabad - HSPCB	433	Severe	PM _{2.5}
	Sector 30, Faridabad - HSPCB	388	Very Poor	PM ₁₀
Gurugram	Sector-51, Gurugram - HSPCB	368	Very Poor	PM _{2.5}
	Teri Gram, Gurugram - HSPCB	450	Severe	PM _{2.5}
Ghaziabad	Loni, Ghaziabad - UPPCB	467	Severe	PM _{2.5}
	Sanjay Nagar, Ghaziabad - UPPCB	453	Severe	PM _{2.5}
Greater Noida	Knowledge Park - V, Greater Noida - UPPCB	374	Very Poor	PM _{2.5}
Noida	Sector - 62, Noida - IMD	452	Severe	PM ₁₀
	Sector - 125, Noida - UPPCB	450	Severe	PM _{2.5}