



Central Pollution Control Board

Air Quality Status for Delhi & NCR

Dated – June 07, 2022



Current Air Quality Status:

Air Quality Index (AQI) (Average of past 24 hours)

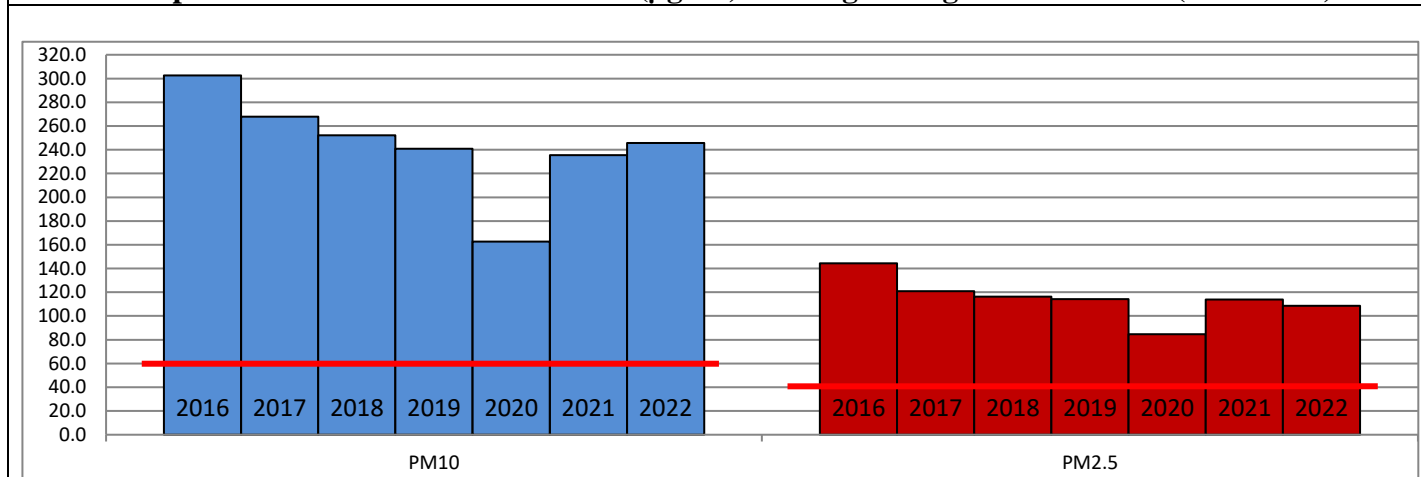
	Air Quality	AQI Value	Prominent Pollutant
Delhi	Poor	280↑	PM ₁₀
Faridabad	Very Poor	318↑	PM ₁₀
Ghaziabad	Poor	290↑	PM ₁₀
Greater Noida	Very Poor	314↑	PM ₁₀
Gurugram	Very Poor	308↑	PM _{2.5} , PM ₁₀
Noida	Very Poor	316↑	PM ₁₀

*Data available for 26 stations in Delhi today. # ↑ ↓ arrows indicate a decrease/increase as compared to the value on the previous day.

Comparative status of AQI - Delhi from 01 January to 07 June 2016-2022

Category	Year	2016	2017	2018	2019	2020	2021	2022	2016	2017	2018	2019	2020	2021	2022
	No. of days	154	158	158	158	159	158	158							
Good (0-50)		0	0	0	0	1	0	0							
Satisfactory (51-100)		0	0	1	2	29	6	4	15	37	51	62	105	66	38
Moderate (101-200)		15	37	50	60	75	60	34							
Poor (201-300)		80	85	77	63	37	54	100							
Very Poor (301-400)		53	36	27	26	15	32	19	139	121	107	96	54	92	120
Severe (>401)		6	0	3	7	2	6	1							

Comparative status of PM_{2.5} and PM₁₀ (µg/m³) running average – Till June 06 (2016-2022)



Hotspots for Today:

*Details given overleaf

Delhi	Mundka, Bawana, Dwarka Sector-8, Narela, Anand Vihar	Gurugram	Sector-51
Faridabad	New Industrial Town	Greater Noida	Knowledge Park-III
Ghaziabad	Loni, Vasundhara	Noida	Sector-125

Forecast by IITM (Delhi):

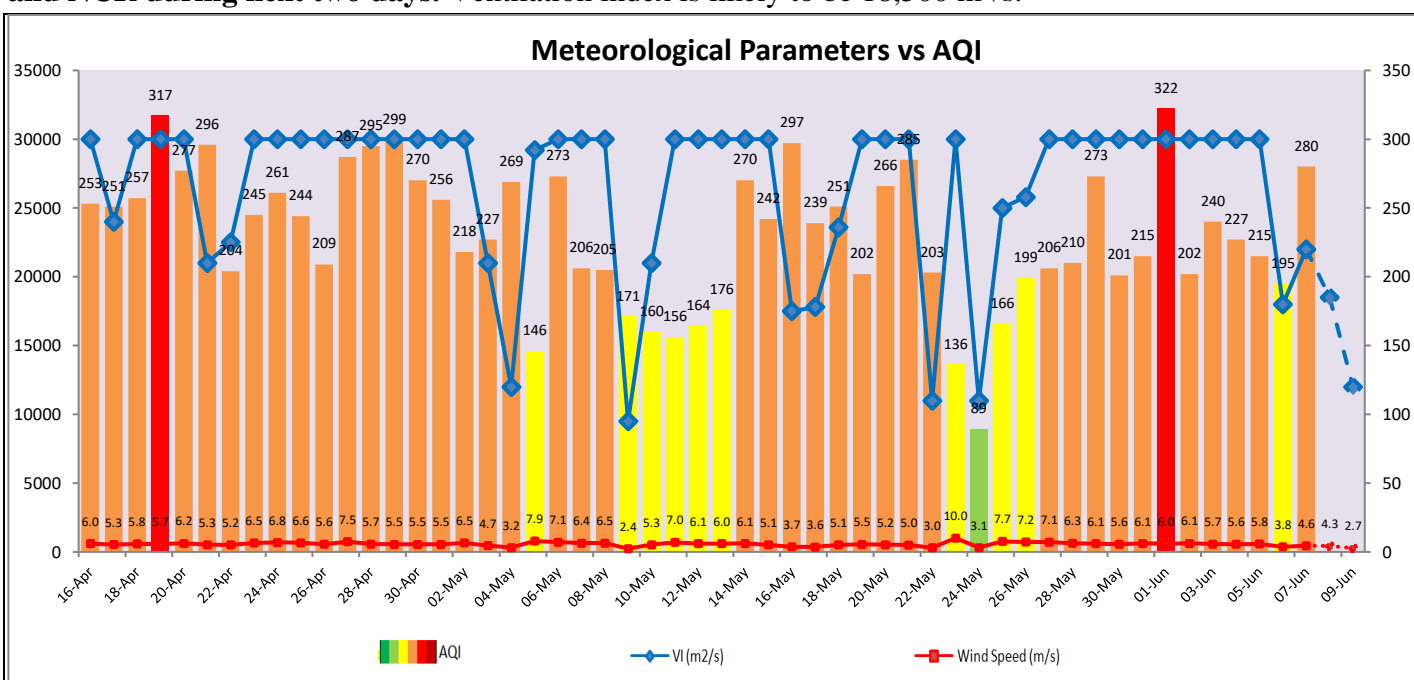
Parameters	June 08, 2022		June 09, 2022- June 10, 2022	
	Concentration	AQI Category	Concentration	AQI Category
PM ₁₀	321	Poor	379	Very Poor
PM _{2.5}	81	Moderate	96	Poor

Wind Forecast for Delhi:

	Wind speed (at surface) in km/h		Wind speed (at 900 m) in km/h	Wind Direction	
	As per IMD (at 17:30 hrs.)	As per windy.com (at 16:00 hrs.)	As per windy.com (at 16:00hrs)	As per IMD (at 17:30hrs.)	As per windy.com at 900m
June 08, 2022	30	15	25	W	W
June 09, 2022	30	13	23	W	W
June 10, 2022	28	15	25	WNW	W

IMD Alert for Tomorrow (08.06.2022):

The air quality is likely to deteriorate from 08.06.2022 to 09.06.2022 and will remain in Poor to lower end of Very Poor category. The predominant surface wind is likely to be coming from West direction in Delhi with wind speed 22-32 kmph, mainly clear sky, and strong surface winds (speed 25-35 kmph) during the day tomorrow. **Long range transported dust will impact air quality over parts of Rajasthan, Gujarat, MP and NCR during next two days.** Ventilation index is likely to be 18,500 m²/s.



Hotspots for Today

City	Station Name	AQI value	Air Quality	Prominent Pollutant
Delhi	Mundka, Delhi - DPCC	344	Very Poor	PM ₁₀
	Bawana, Delhi - DPCC	332	Very Poor	PM ₁₀
	Dwarka-Sector 8, Delhi - DPCC	323	Very Poor	PM ₁₀
	Anand Vihar, Delhi - DPCC	320	Very Poor	PM ₁₀
	Narela, Delhi - DPCC	318	Very Poor	PM ₁₀
Faridabad	New Industrial Town, Faridabad - HSPCB	366	Very Poor	PM ₁₀
Gurugram	Sector-51, Gurugram - HSPCB	338	Very Poor	PM ₁₀
Ghaziabad	Loni, Ghaziabad - UPPCB	395	Very Poor	PM ₁₀
	Vasundhara, Ghaziabad - UPPCB	301	Very Poor	PM ₁₀
Greater Noida	Knowledge Park - III, Greater Noida - UPPCB	310	Very Poor	PM ₁₀
Noida	Sector - 125, Noida - UPPCB	322	Very Poor	PM ₁₀