



Central Pollution Control Board

Air Quality Status for Delhi & NCR

Dated – November 06, 2022



Current Air Quality Status:

Air Quality Index (AQI) (Average of past 24 hours)

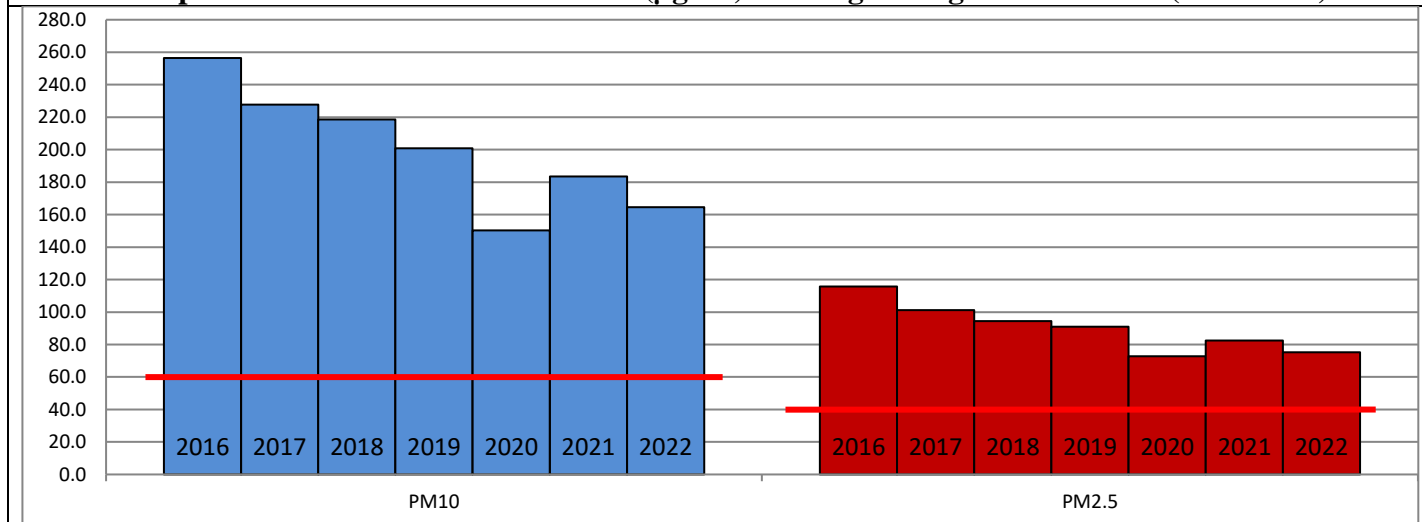
	Air Quality	AQI Value	Prominent Pollutant
Delhi	Very Poor	339 ↓	PM _{2.5}
Faridabad	Very Poor	311 ↓	PM _{2.5}
Ghaziabad	Poor	288 ↓	PM _{2.5}
Greater Noida	Poor	299 ↓	PM _{2.5}
Gurugram	Very Poor	308 ↓	PM _{2.5}
Noida	Very Poor	330 ↓	PM _{2.5}

*Data available for 36 stations in Delhi today. # ↓ ↑ arrows indicate a decrease/increase as compared to the value on the previous day.

Comparative status of AQI - Delhi from 01 January to 06 November 2016-2022

Category	Year	2016	2017	2018	2019	2020	2021	2022	2016	2017	2018	2019	2020	2021	2022
	No. of days	299	310	310	310	311	310	310							
Good (0–50)		0	2	0	2	5	1	3							
Satisfactory (51–100)		24	45	53	58	95	81	65	110	150	158	175	224	197	160
Moderate (101–200)		86	103	105	115	124	115	92							
Poor (201–300)		116	102	103	89	56	69	115							
Very Poor (301–400)		60	57	41	34	27	36	31	189	160	152	135	87	113	150
Severe (>401)		13	1	8	12	4	8	4							

Comparative status of PM₁₀ and PM_{2.5} (µg/m³) running average – Till Nov 02 (2016-2022)



Hotspots for Today:

*Details given overleaf

Delhi	Bawana, Jahangirpuri, Wazirpur, Sonia Vihar, RK Puram	Ghaziabad	Vasundhara, Loni
Faridabad	Sector- 16A, Sector 11	Greater Noida	Knowledge Park-III
Gurugram	Sector-51, Teri Gram	Noida	Sector – 116, Sector-1

Forecast by IITM (Delhi):

	Nov 07, 2022		Nov 08, 2022- Nov 09, 2022	
	Concentration	AQI Category	Concentration	AQI Category
PM ₁₀	232	Moderate	220	Moderate
PM _{2.5}	141	Very Poor	133	Very Poor

Wind Forecast for Delhi:

	Wind speed (at surface) in km/h		Wind speed (at 900 m) in km/h	Wind Direction	
	As per IMD (range)	As per windy.com (at 16:00 hrs.)	As per windy.com (at 16:00hrs)	As per IMD	As per windy.com at 900m
Nov 07, 2022	04-08	06	11	SE	N
Nov 08, 2022	upto 04	06	13	E/CALM	W
Nov 09, 2022	upto 04	08	10	CALM/N	NW

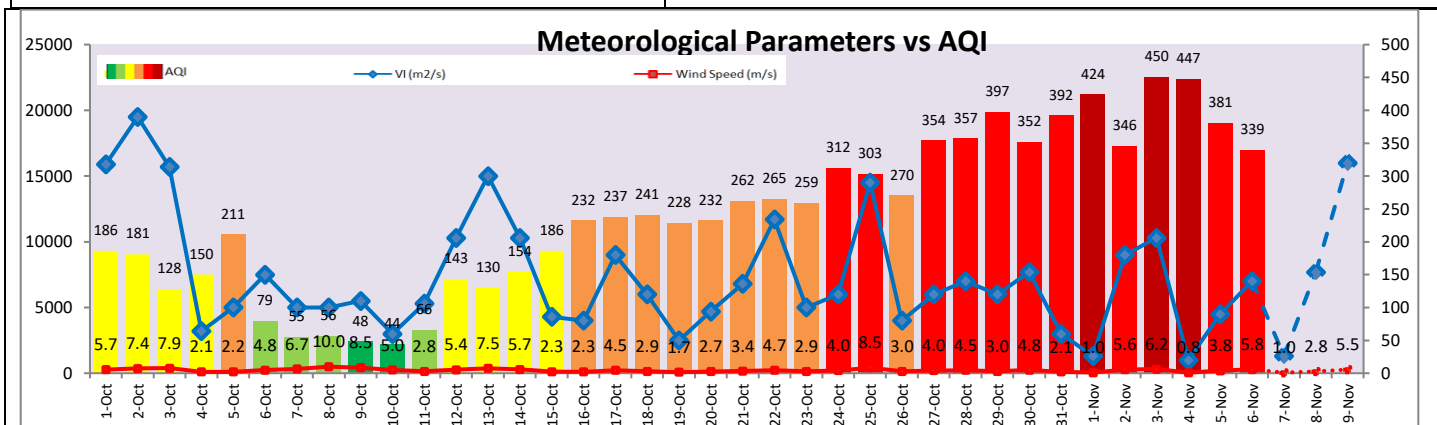
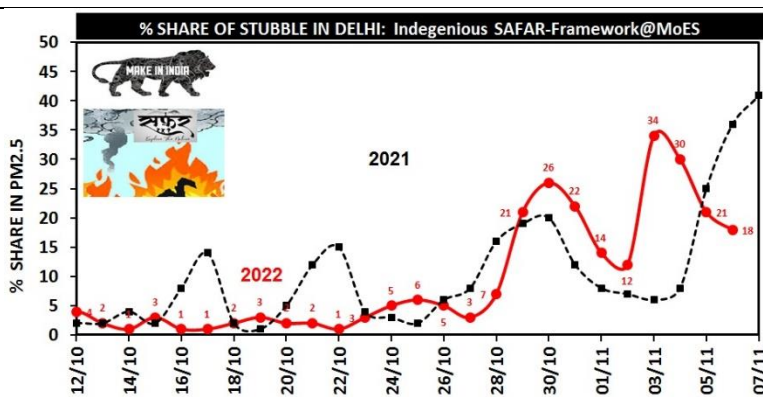
IMD Alert for Tomorrow (07.11.2022):

The overall air quality over Delhi is likely to improve owing to strong easterly winds and reach in lower end of Very Poor category on 07.11.2022. The predominant surface wind is likely to be coming from Southeast direction in Delhi with wind speed 04-08 kmph, partly cloudy sky and shallow fog in the morning tomorrow. Ventilation index is likely to be 1,300 m²/s.

Active Fire Events (AFE)s:

Date	Punjab		Haryana	
	Nos. on the day	Total since September 15	Nos. on the day	Total since September 15
05.11.2022	2817	29400	90	2530
05.11.2021	5327	28937	331	3997

* As per IITM, the impact of stubble burning is ~18%.



Hotspots for Today

City	Station Name	AQI value	Air Quality	Prominent Pollutant
Delhi	Bawana, Delhi - DPCC	370	Very Poor	PM _{2.5}
	Sonia Vihar, Delhi - DPCC	370	Very Poor	PM _{2.5}
	Jahangirpuri, Delhi - DPCC	367	Very Poor	PM _{2.5}
	Wazirpur, Delhi - DPCC	364	Very Poor	PM _{2.5}
	R K Puram, Delhi - DPCC	362	Very Poor	PM _{2.5}
Faridabad	Sector 11, Faridabad - HSPCB	352	Very Poor	PM _{2.5}
	Sector- 16A, Faridabad - HSPCB	346	Very Poor	PM _{2.5}
Gurugram	Teri Gram, Gurugram - HSPCB	321	Very Poor	PM _{2.5}
	Sector-51, Gurugram - HSPCB	316	Very Poor	PM _{2.5}
Ghaziabad	Vasundhara, Ghaziabad - UPPCB	315	Very Poor	PM _{2.5}
	Loni, Ghaziabad - UPPCB	304	Very Poor	PM _{2.5}
Greater Noida	Knowledge Park - III, Greater Noida - UPPCB	326	Very Poor	PM _{2.5}
Noida	Sector-116, Noida - UPPCB	364	Very Poor	PM _{2.5}
	Sector-1, Noida - UPPCB	348	Very Poor	PM _{2.5}