



# Central Pollution Control Board

## Air Quality Status for Delhi & NCR

Dated – November 06, 2021



### Current Air Quality Status:

#### Air Quality Index (AQI) (Average of past 24 hours- 4 pm CPCB Bulletin)

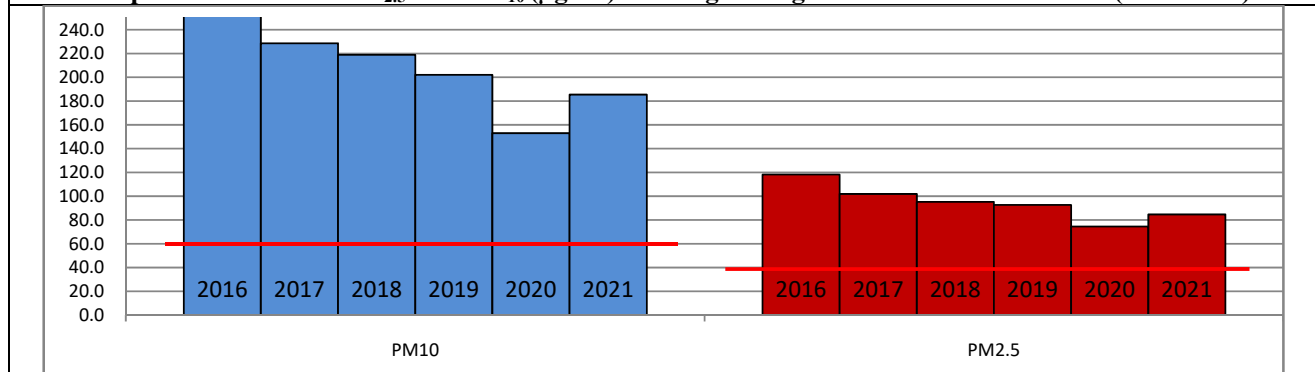
	Air Quality	AQI Value	Prominent Pollutant
Delhi	Severe	437 ↓	PM <sub>10</sub> , PM <sub>2.5</sub>
Faridabad	Severe	449 ↓	PM <sub>2.5</sub>
Ghaziabad	Severe	466 ↓	PM <sub>2.5</sub>
Greater Noida	Severe	414 ↓	PM <sub>2.5</sub>
Gurugram	Severe	456 ↓	PM <sub>2.5</sub>
Noida	Severe	461 ↓	PM <sub>10</sub> , PM <sub>2.5</sub>

\*Data available for 37 stations in Delhi today. # ↓, ↑ arrows indicate increase/decrease as compared to value on the previous day

#### Comparative status of AQI - Delhi from 01 January to 06 November 2016-2021

Category	Year	2016	2017	2018	2019	2020	2021	2016	2017	2018	2019	2020	2021
	No. of days	299	310	310	310	311	310						
Good (0-50)		0	2	0	2	5	1						
Satisfactory (51-100)		25	45	53	58	95	72	108	150	158	175	224	197
Moderate (101-200)		83	103	105	115	124	124						
Poor (201-300)		116	102	103	89	56	69						
Very Poor (301-400)		62	57	41	34	27	36	191	160	152	135	87	113
Severe (>401)		13	1	8	12	4	8						

#### Comparative status of PM<sub>2.5</sub> and PM<sub>10</sub> (µg/m<sup>3</sup>) running average - Delhi till November 05 (2016-2021)



\*The PM values are 24 hourly averages (6 pm to 6 am)

#### Hotspots for Today:

\*Details given overleaf

Delhi	Jahangirpuri, Vivek Vihar, Dr. Karni Singh Shooting Range, Wazirpur, Mundka	Greater Noida	Knowledge Park - III
Faridabad	Sector 11, Sector- 16A	Gurugram	Sector-51, Teri Gram
Ghaziabad	Loni, Indirapuram	Noida	Sector 116, Sector 125

#### Forecast by IITM:

Parameters	November 07, 2021		November 08, 2021– November 09, 2021	
	Concentration	AQI Category	Concentration	AQI Category
PM <sub>10</sub>	290	Poor	226	Moderate
PM <sub>2.5</sub>	202	Very Poor	157	Poor

▪ **Wind Forecast for Delhi:**

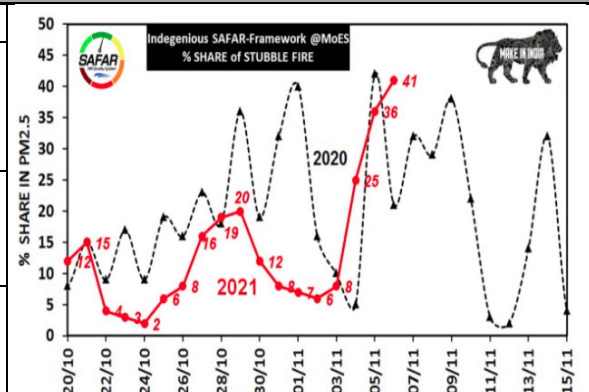
Dates	Wind speed (at surface) in km/h		Wind speed (at 900 m) in km/h	Wind Direction	
	As per IMD (at 17:30 hrs.)	As per windy.com (at 16:00 hrs.)	As per windy.com (at 16:00hrs)	As per IMD (at 17:30hrs.)	As per windy.com at 900m
November 07, 2021	08	10	20	NW	NW
November 08, 2021	08	09	26	NW	NW
November 09, 2021	08	10	25	NW	NW

▪ **IMD Alert for Tomorrow (07.11.2021):**

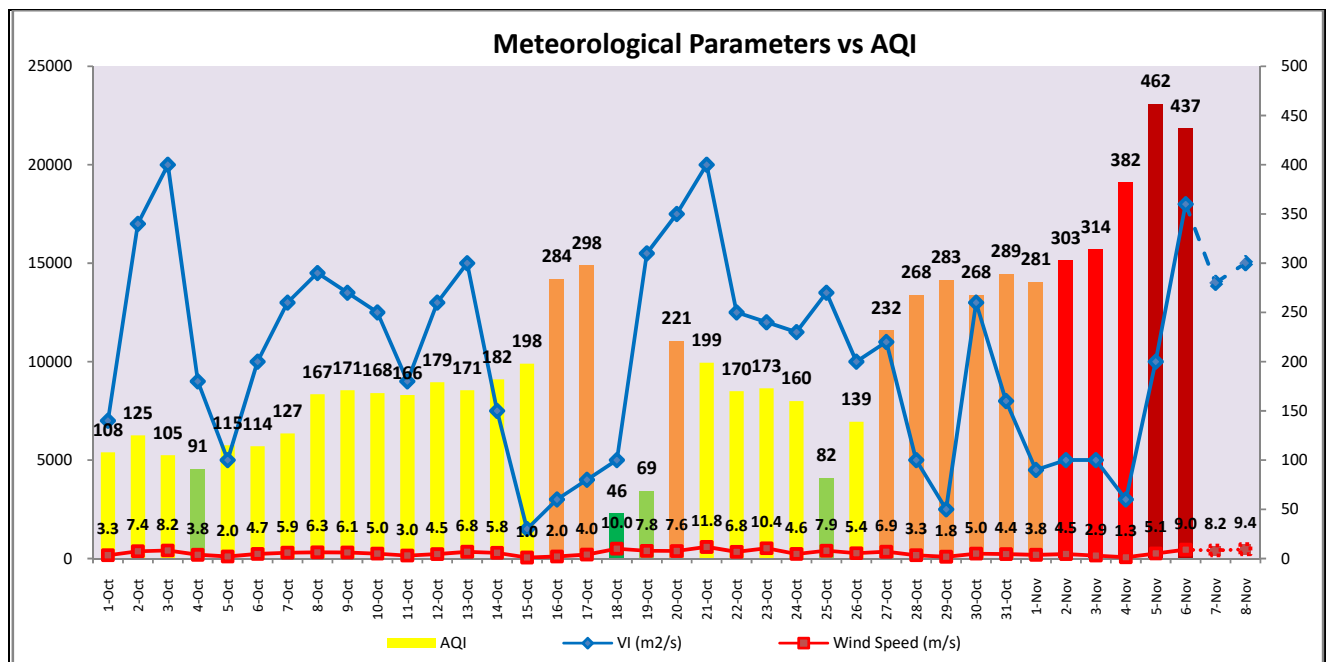
The air quality over Delhi-NCT is likely to improve tomorrow owing to strong winds but remain in Very Poor category. The predominant surface wind is likely to be coming from Northwest directions of Delhi with wind speed of 08-20 kmph, partly cloudy sky, mist/shallow fog in the morning and strong surface winds (speed 25-35 kmph) during the day. Ventilation index is likely to be 14,000m<sup>2</sup>/s.

▪ **Active Fire Events (AFE)**

Date	Punjab		Haryana	
	Nos. on the day	Total since September 21	Nos. on the day	Total since September 21
05.11.2021	5327	28937	331	3997
05.11.2020	4529	53107	66	2837



The contribution of biomass burning in PM<sub>2.5</sub> concentration is likely to be approximately 25% on 06.11.2021 and 07.11.2021 as winds are favourable for transportation of pollutants.



\*The AQI values are from the CPCB bulletin (4 pm)

▪ Hotspots for Today

City	Station Name	AQI value	Air Quality	Prominent Pollutant
Delhi	Jahangirpuri, Delhi - DPCC	472	Severe	PM <sub>2.5</sub>
	Vivek Vihar, Delhi - DPCC	466	Severe	PM <sub>2.5</sub>
	Dr. Karni Singh Shooting Range, Delhi - DPCC	465	Severe	PM <sub>2.5</sub>
	Wazirpur, Delhi - DPCC	464	Severe	PM <sub>2.5</sub>
	Mundka, Delhi - DPCC	460	Severe	PM <sub>2.5</sub>
Faridabad	Sector 11, Faridabad - HSPCB	482	Severe	PM <sub>2.5</sub>
	Sector- 16A, Faridabad - HSPCB	460	Severe	PM <sub>2.5</sub>
Gurugram	Sector-51, Gurugram - HSPCB	489	Severe	PM <sub>10</sub>
	Teri Gram, Gurugram - HSPCB	461	Severe	PM <sub>2.5</sub>
Ghaziabad	Loni, Ghaziabad - UPPCB	481	Severe	PM <sub>2.5</sub>
	Indrapuram, Ghaziabad - UPPCB	466	Severe	PM <sub>10</sub>
Greater Noida	Knowledge Park - III, Greater Noida - UPPCB	430	Severe	PM <sub>2.5</sub>
Noida	Sector-116, Noida - UPPCB	473	Severe	PM <sub>2.5</sub>
	Sector - 125, Noida - UPPCB	466	Severe	PM <sub>10</sub>