



Central Pollution Control Board

Air Quality Status for Delhi & NCR

Dated – January 06, 2022



Current Air Quality Status:

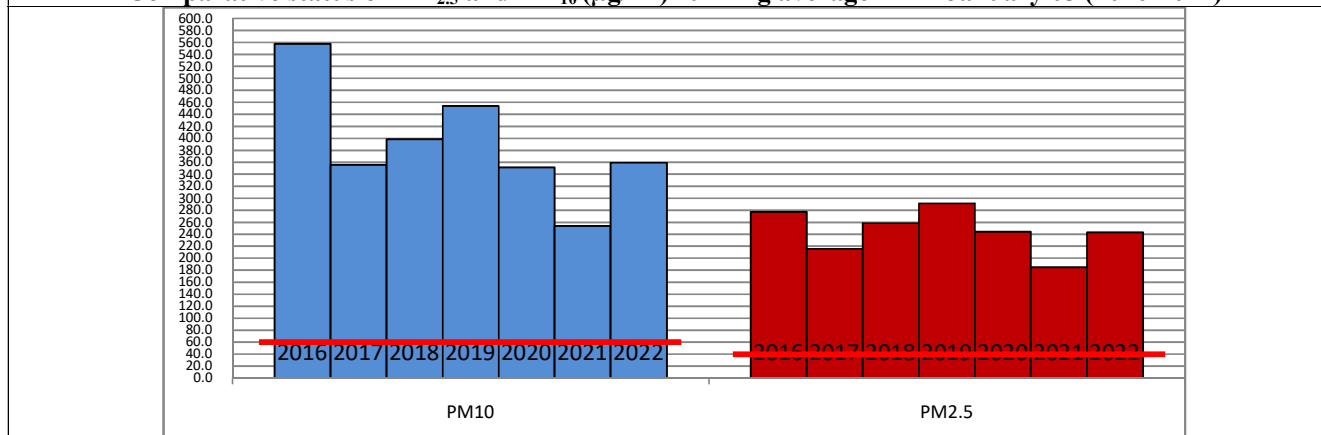
Air Quality Index (AQI) (Average of past 24 hours)			
	Air Quality	AQI Value	Prominent Pollutant
Delhi	Poor	258↓	PM _{2.5}
Faridabad	Poor	219↓	PM _{2.5} , PM ₁₀
Ghaziabad	Moderate	179↓	PM _{2.5}
Greater Noida	Moderate	182↓	O ₃ , PM _{2.5}
Gurugram	Poor	224↓	PM ₁₀ , PM _{2.5}
Noida	Poor	252↓	PM _{2.5}

*Data available for 29 stations in Delhi today. # ↓, ↑ arrows indicate increase/decrease as compared to value on the previous day

Comparative status of AQI - Delhi from 01 January to 06 January 2016-2022

Category	Year	2016	2017	2018	2019	2020	2021	2022	2016	2017	2018	2019	2020	2021	2022
	No. of days	6	6	6	6	6	6	6							
Good (0–50)		0	0	0	0	0	0	0							
Satisfactory (51–100)		0	0	0	0	0	0	0	0	0	0	0	0	2	0
Moderate (101–200)		0	0	0	0	0	2	0							
Poor (201–300)		0	0	0	0	0	1	1							
Very Poor (301–400)		4	6	4	3	4	1	4	6	6	6	6	6	4	6
Severe (>401)		2	0	2	3	2	2	1							

Comparative status of PM_{2.5} and PM₁₀ (µg/m³) running average – Till January 05 (2016-2022)



Hotspots for Today:

*Details given overleaf

Delhi	Jahangirpuri, Narela, Wazirpur, Punjabi Bagh, Bawana	Gurugram	NISE Gwal Pahari, Sector-51
Faridabad	Sector-16A, New Industrial Town	Greater Noida	Knowledge Park – V
Ghaziabad	Sanjay Nagar, Indirapuram	Noida	Sector -116, Sector - 1

Forecast by IITM:

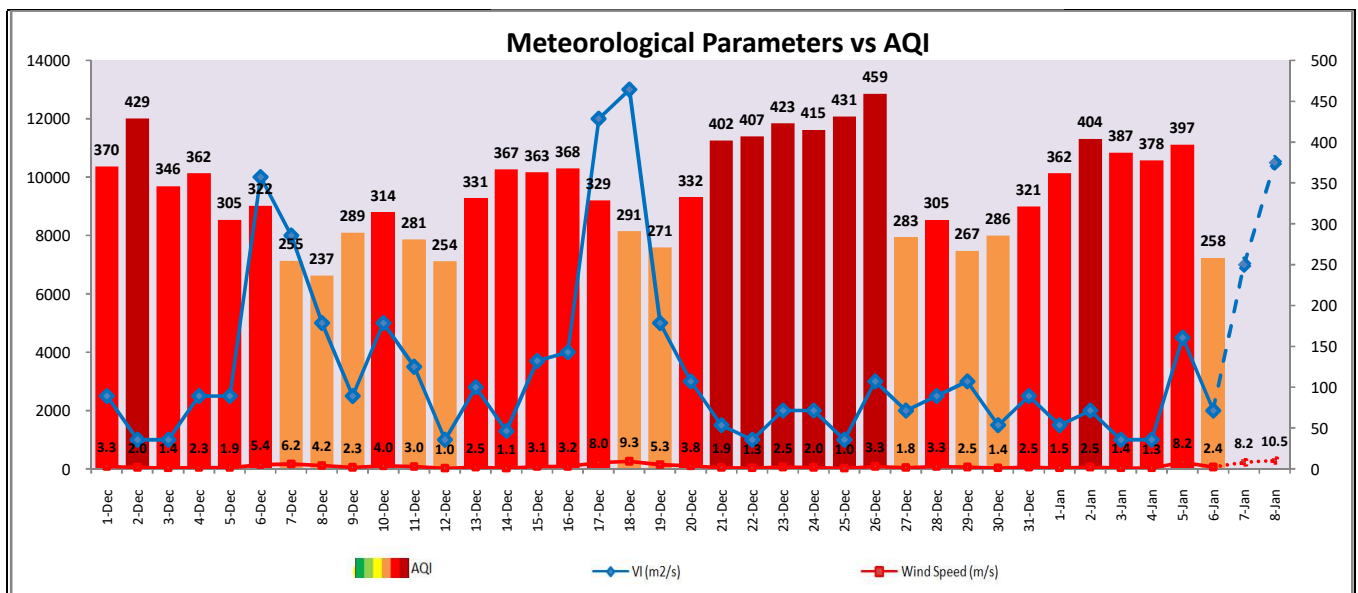
Parameters	January 07, 2022		January 08, 2022-January 09, 2022	
	Concentration	AQI Category	Concentration	AQI Category
PM ₁₀	206	Moderate	183	Moderate
PM _{2.5}	156	Very Poor	139	Very Poor

▪ **Wind Forecast for Delhi:**

	Wind speed (at surface) in km/h		Wind speed (at 900 m) in km/h	Wind Direction	
	As per IMD (at17:30 hrs.)	As per windy.com (at 16:00 hrs.)	As per windy.com (at 16:00hrs)	As per IMD (at17:30hrs.)	As per windy.com at 900m
January 07, 2022	15	12	37	SE	SE
January 08, 2022	15	17	35	SE	SE
January 09, 2022	05	08	14	NE	W

▪ **IMD Alert for Tomorrow (07.01.2022):**

The air quality is likely to improve further and remain in Moderate category on 07.01.2022 and 08.01.2022. The predominant surface wind is likely to be coming from Southeast direction of Delhi with wind speed 08-15 kmph with generally cloudy sky, very light rain/ drizzle and moderate fog in the morning. Ventilation index is likely to be 7,000 m²/s.



▪ **Hotspots for Today**

City	Station Name	AQI value	Air Quality	Prominent Pollutant
Delhi	Jahangirpuri, Delhi - DPCC	323	Very Poor	PM _{2.5}
	Narela, Delhi - DPCC	317	Very Poor	PM _{2.5}
	Wazirpur, Delhi - DPCC	306	Very Poor	PM _{2.5}
	Punjabi Bagh, Delhi - DPCC	305	Very Poor	PM _{2.5}
	Bawana, Delhi - DPCC	294	Poor	PM _{2.5}
Faridabad	Sector- 16A, Faridabad - HSPCB	283	Poor	PM _{2.5}
	New Industrial Town, Faridabad - HSPCB	241	Poor	PM ₁₀
Gurugram	NISE Gwal Pahari, Gurugram - IMD	262	Poor	PM _{2.5}
	Sector-51, Gurugram - HSPCB	241	Poor	PM _{2.5}
Ghaziabad	Sanjay Nagar, Ghaziabad - UPPCB	227	Poor	PM _{2.5}
	Indirapuram, Ghaziabad - UPPCB	165	Moderate	PM _{2.5}
Greater Noida	Knowledge Park - V, Greater Noida - UPPCB	205	Poor	OZONE
Noida	Sector-1, Noida - UPPCB	303	Very Poor	PM _{2.5}
	Sector-116, Noida - UPPCB	232	Poor	PM _{2.5}