



Central Pollution Control Board

Air Quality Status for Delhi & NCR

Dated – November 05, 2022



Current Air Quality Status:

Air Quality Index (AQI) (Average of past 24 hours)

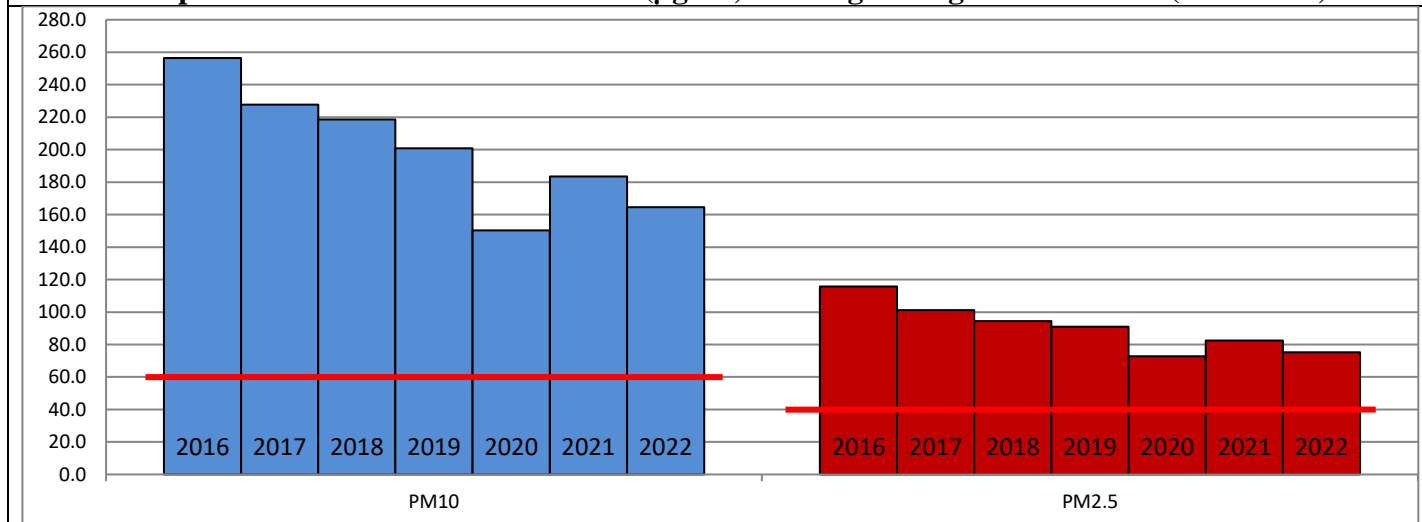
	Air Quality	AQI Value	Prominent Pollutant
Delhi	Very Poor	381 ↓	PM _{2.5}
Faridabad	Very Poor	334 ↓	PM _{2.5}
Ghaziabad	Very Poor	322 ↓	PM _{2.5}
Greater Noida	Very Poor	312 ↓	PM _{2.5}
Gurugram	Very Poor	357 ↓	PM _{2.5}
Noida	Very Poor	357 ↓	PM _{2.5}

*Data available for 37 stations in Delhi today. # ↓ ↑ arrows indicate a decrease/increase as compared to the value on the previous day.

Comparative status of AQI - Delhi from 01 January to 05 November 2016-2022

Category	Year	2016	2017	2018	2019	2020	2021	2022	2016	2017	2018	2019	2020	2021	2022
	No. of days	298	309	309	309	310	309	309							
Good (0–50)		0	2	0	2	5	1	3							
Satisfactory (51–100)		24	45	53	58	95	81	65	110	150	158	175	224	197	160
Moderate (101–200)		86	103	105	115	124	115	92							
Poor (201–300)		116	102	103	88	56	69	115	188	159	151	134	86	112	149
Very Poor (301–400)		60	56	40	34	27	36	30							
Severe (>401)		12	1	8	12	3	7	4							

Comparative status of PM₁₀ and PM_{2.5} (µg/m³) running average – Till Nov 02 (2016-2022)



Hotspots for Today:

*Details given overleaf

Delhi	Bawana, Jahangirpuri, Narela, Sonia Vihar, RK Puram	Ghaziabad	Vasundhara, Loni
Faridabad	Sector- 16A, Sector 11	Greater Noida	Knowledge Park-III
Gurugram	Sector-51	Noida	Sector - 62

Forecast by IITM (Delhi):

	Nov 06, 2022		Nov 07, 2022- Nov 08, 2022	
	Concentration	AQI Category	Concentration	AQI Category
PM ₁₀	289	Poor	272	Poor
PM _{2.5}	182	Very Poor	172	Very Poor

Wind Forecast for Delhi:

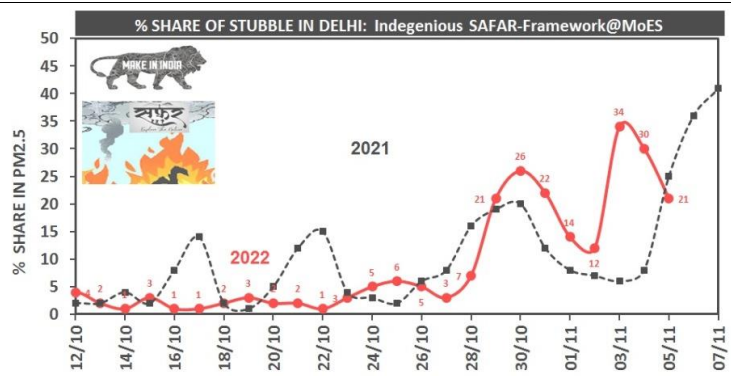
	Wind speed (at surface) in km/h		Wind speed (at 900 m) in km/h	Wind Direction	
	As per IMD (range)	As per windy.com (at 16:00 hrs.)	As per windy.com (at 16:00hrs)	As per IMD	As per windy.com at 900m
Nov 06, 2022	08-10	07	14	SE	W
Nov 07, 2022	08-12	09	15	VAR	N
Nov 08, 2022	04-18	05	12	E	W

IMD Alert for Tomorrow (06.11.2022):

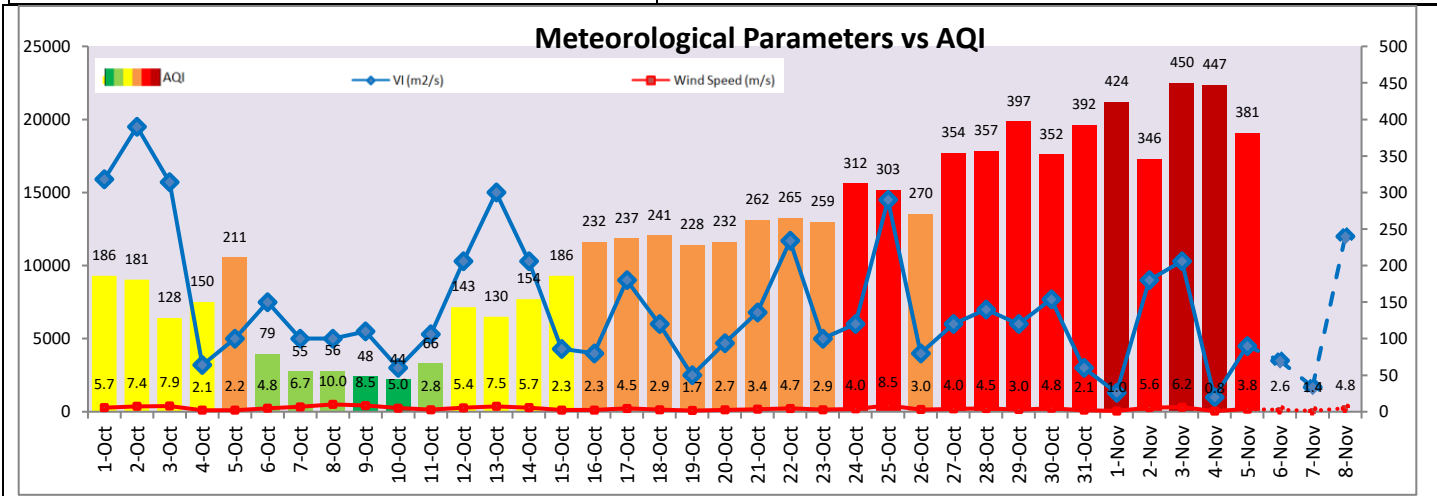
The air quality is likely to improve further but remain in Very Poor category from 06.11.2022 to 08.11.2022. The predominant surface wind is likely to be coming from Southeast direction in Delhi with wind speed 08-10 kmph, partly cloudy sky and shallow fog in the morning tomorrow. Ventilation index is likely to be 3,500 m²/s.

Active Fire Events (AFE)s:

Date	Punjab		Haryana	
	Nos. on the day	Total since September 15	Nos. on the day	Total since September 15
04.11.2022	2437	26583	63	2440
04.11.2021	3032	23610	228	3666



* As per IITM, the impact of stubble burning is ~21%.



Hotspots for Today

City	Station Name	AQI value	Air Quality	Prominent Pollutant
Delhi	Narela, Delhi - DPCC	421	Severe	PM2.5
	Bawana, Delhi - DPCC	418	Severe	PM2.5
	Jahangirpuri, Delhi - DPCC	415	Severe	PM2.5
	Sonia Vihar, Delhi - DPCC	414	Severe	PM2.5
	R K Puram, Delhi - DPCC	411	Severe	PM2.5
Faridabad	Sector 11, Faridabad - HSPCB	390	Very Poor	PM2.5
	Sector- 16A, Faridabad - HSPCB	385	Very Poor	PM2.5
Gurugram	Sector-51, Gurugram - HSPCB	363	Very Poor	PM2.5
Ghaziabad	Vasundhara, Ghaziabad - UPPCB	343	Very Poor	PM2.5
	Loni, Ghaziabad - UPPCB	330	Very Poor	PM2.5
Greater Noida	Knowledge Park - III, Greater Noida - UPPCB	353	Very Poor	PM2.5
Noida	Sector - 62, Noida - IMD	368	Very Poor	PM2.5