



Central Pollution Control Board

Air Quality Status for Delhi & NCR

Dated – November 05, 2021



Current Air Quality Status:

Air Quality Index (AQI) (Average of past 24 hours)

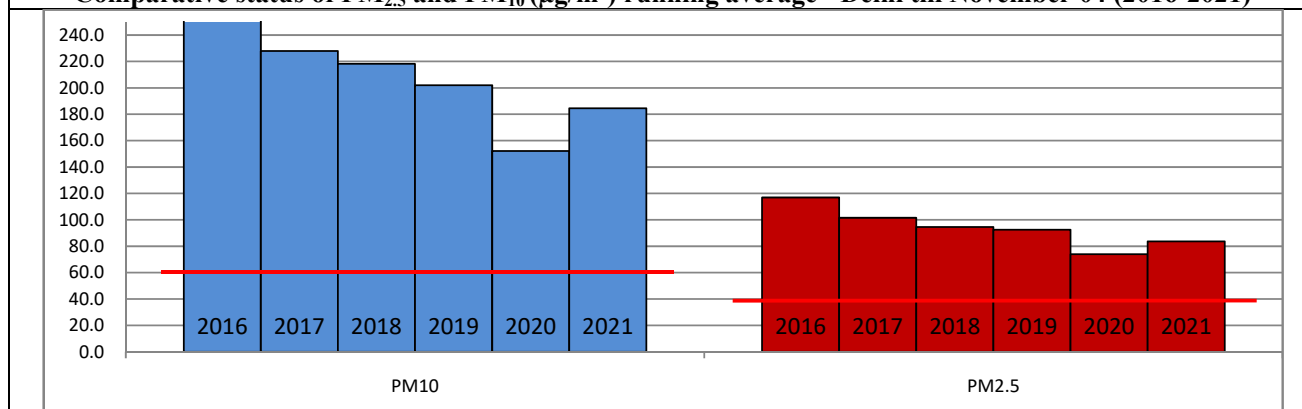
	Air Quality	AQI Value	Prominent Pollutant
Delhi	Severe	462 ↓	PM _{2.5}
Faridabad	Severe	469 ↑	PM _{2.5}
Ghaziabad	Severe	470 ↑	PM ₁₀ , PM _{2.5}
Greater Noida	Severe	464 ↑	PM _{2.5}
Gurugram	Severe	472 ↑	PM _{2.5}
Noida	Severe	475 ↑	PM _{2.5}

*Data available for 35 stations in Delhi today. # ↑ ↓ arrows indicate increase/decrease as compared to value on the previous day

Comparative status of AQI - Delhi from 01 January to 05 November 2016-2021

Category	Year	2016	2017	2018	2019	2020	2021	2016	2017	2018	2019	2020	2021
	No. of days	298	309	309	309	310	309						
Good (0–50)		0	2	0	2	5	1						
Satisfactory (51–100)		25	45	53	58	95	72	108	150	158	175	224	197
Moderate (101–200)		83	103	105	115	124	124						
Poor (201–300)		116	102	103	88	56	69						
Very Poor (301–400)		62	56	40	34	27	36	190	159	151	134	86	112
Severe (>401)		12	1	8	12	3	7						

Comparative status of PM_{2.5} and PM₁₀ (µg/m³) running average - Delhi till November 04 (2016-2021)



Hotspots for Today:

*Details given overleaf

Delhi	Jahangirpuri, Sonia Vihar, Rohini, Narela, Vivek Vihar	Greater Noida	Knowledge Park - V
Faridabad	Sector 16A, Sector 11	Gurugram	NISE Gwal Pahari, Teri Gram
Ghaziabad	Indirapuram, Vasundhara	Noida	Sector 1, Sector 125

Forecast by IITM:

Parameters	November 06, 2021		November 07, 2021– November 08, 2021	
	Concentration	AQI Category	Concentration	AQI Category
PM ₁₀	332	Poor	265	Poor
PM _{2.5}	230	Very Poor	184	Very Poor

▪ **Wind Forecast for Delhi:**

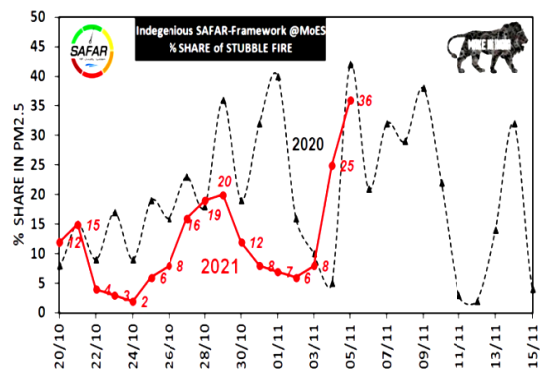
Dates	Wind speed (at surface) in km/h		Wind speed (at 900 m) in km/h	Wind Direction	
	As per IMD (at 17:30 hrs.)	As per windy.com (at 16:00 hrs.)	As per windy.com (at 16:00hrs)	As per IMD (at 17:30hrs.)	As per windy.com at 900m
November 06, 2021	10	09	35	WNW	NW
November 07, 2021	10	09	22	WNW	NW
November 08, 2021	08	10	27	WNW	NW

▪ **IMD Alert for Tomorrow (06.11.2021):**

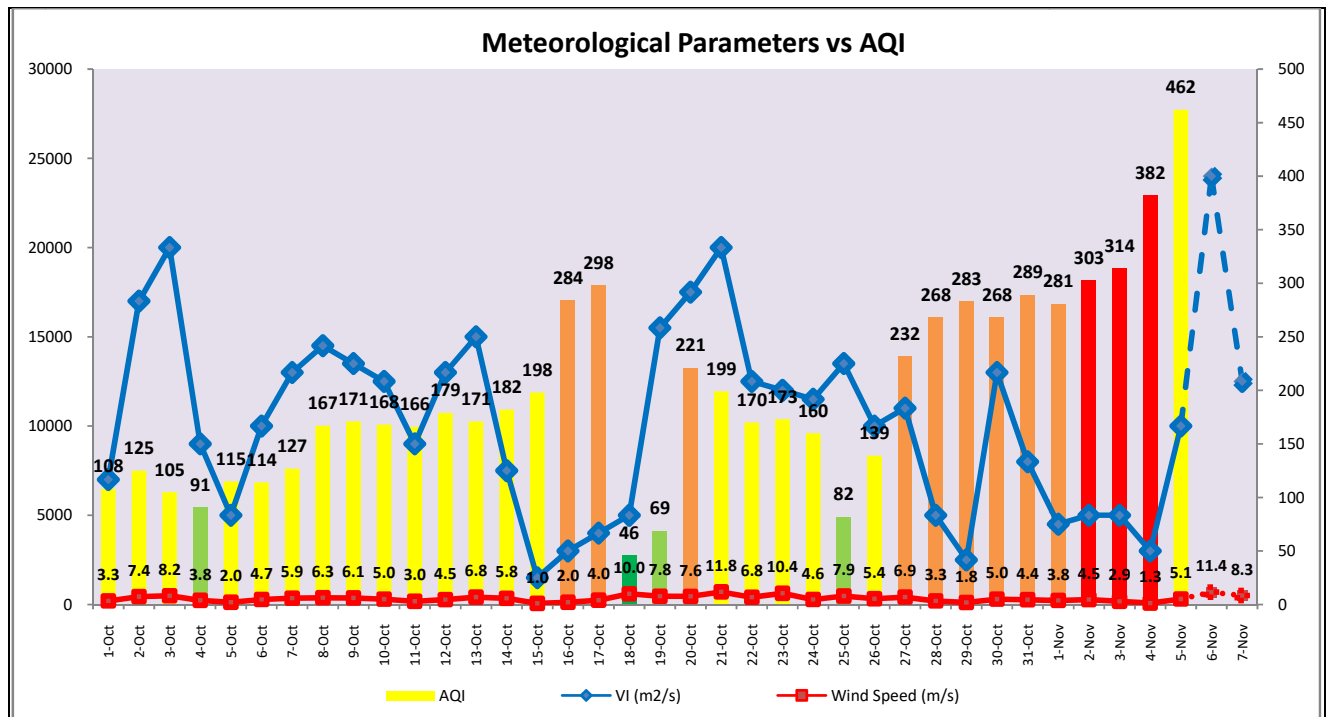
The contribution from firecrackers, biomass burning and unfavourable weather conditions brought AQI in severe category. The air quality is likely to improve further tomorrow. The predominant surface wind is likely to be coming from West-Northwest directions of Delhi with wind speed of 10-20 kmph, partly cloudy sky, mist/shallow fog in the morning and strong surface winds (speed 25-35 kmph) during the day. Ventilation index is likely to be 24,000m²/s.

▪ **Active Fire Events (AFE)**

Date	Punjab		Haryana	
	Nos. on the day	Total since September 21	Nos. on the day	Total since September 21
04.11.2021	3032	23610	228	3666
04.11.2020	4584	4857	72	2771



The contribution of biomass burning in PM_{2.5} concentration is likely to increase to approximately 20% on 05.11.2021 and 25% on 06.11.2021 as winds are favourable for transportation of pollutants.



▪ Hotspots for Today

City	Station Name	AQI value	Air Quality	Prominent Pollutant
Delhi	Jahangirpuri, Delhi - DPCC	486	Severe	PM _{2.5}
	Sonia Vihar, Delhi - DPCC	486	Severe	PM _{2.5}
	Rohini, Delhi - DPCC	483	Severe	PM _{2.5}
	Narela, Delhi - DPCC	482	Severe	PM _{2.5}
	Vivek Vihar, Delhi - DPCC	482	Severe	PM _{2.5}
Faridabad	Sector 11, Faridabad - HSPCB	482	Severe	PM _{2.5}
	Sector- 16A, Faridabad - HSPCB	474	Severe	PM _{2.5}
Gurugram	Teri Gram, Gurugram - HSPCB	479	Severe	PM _{2.5}
	NISE Gwal Pahari, Gurugram - IMD	477	Severe	PM _{2.5}
Ghaziabad	Indrapuram, Ghaziabad - UPPCB	474	Severe	PM _{2.5}
	Vasundhara, Ghaziabad - UPPCB	473	Severe	PM ₁₀
Greater Noida	Knowledge Park - V, Greater Noida - UPPCB	468	Severe	PM _{2.5}
Noida	Sector - 125, Noida - UPPCB	479	Severe	PM _{2.5}
	Sector-1, Noida - UPPCB	479	Severe	PM _{2.5}