



Central Pollution Control Board

Air Quality Status for Delhi & NCR

Dated – June 05, 2022



Current Air Quality Status:

Air Quality Index (AQI) (Average of past 24 hours)

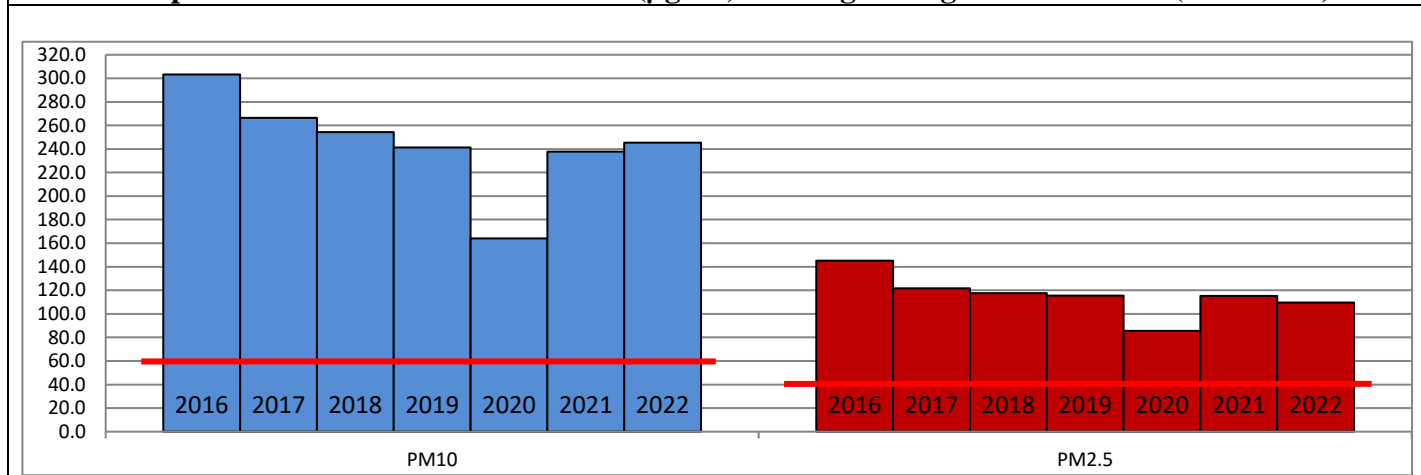
	Air Quality	AQI Value	Prominent Pollutant
Delhi	Poor	215 ↓	PM ₁₀
Faridabad	Poor	291 ↑	PM ₁₀
Ghaziabad	Poor	247 ↓	PM ₁₀
Greater Noida	Poor	236 ↓	PM ₁₀
Gurugram	Poor	230 ↓	PM _{2.5} , PM ₁₀
Noida	Poor	234 ↓	PM ₁₀

*Data available for 34 stations in Delhi today. # ↓, ↑ arrows indicate a decrease/increase as compared to value on the previous day.

Comparative status of AQI - Delhi from 01 January to 05 June 2016-2022

Category	Year	2016	2017	2018	2019	2020	2021	2022	2016	2017	2018	2019	2020	2021	2022
	No. of days	153	156	156	156	157	156	156							
Good (0-50)		0	0	0	0	1	0	0							
Satisfactory (51-100)		0	0	1	2	29	6	4	15	36	49	61	103	64	37
Moderate (101-200)		15	36	48	59	73	58	33							
Poor (201-300)		79	84	77	62	37	54	99							
Very Poor (301-400)		53	36	27	26	15	32	19	138	120	107	95	54	92	119
Severe (>401)		6	0	3	7	2	6	1							

Comparative status of PM_{2.5} and PM₁₀ (µg/m³) running average – Till June 02 (2016-2022)



Hotspots for Today:

*Details given overleaf

Delhi	Anand Vihar, Mundka, Dwarka Sector-8, Bawana, Rohini	Gurugram	Vikas Sadan, Sector-51
Faridabad	-	Greater Noida	Knowledge Park-III
Ghaziabad	Loni, Vasundhara	Noida	Sector-125, Sector-116

Forecast by IITM (Delhi):

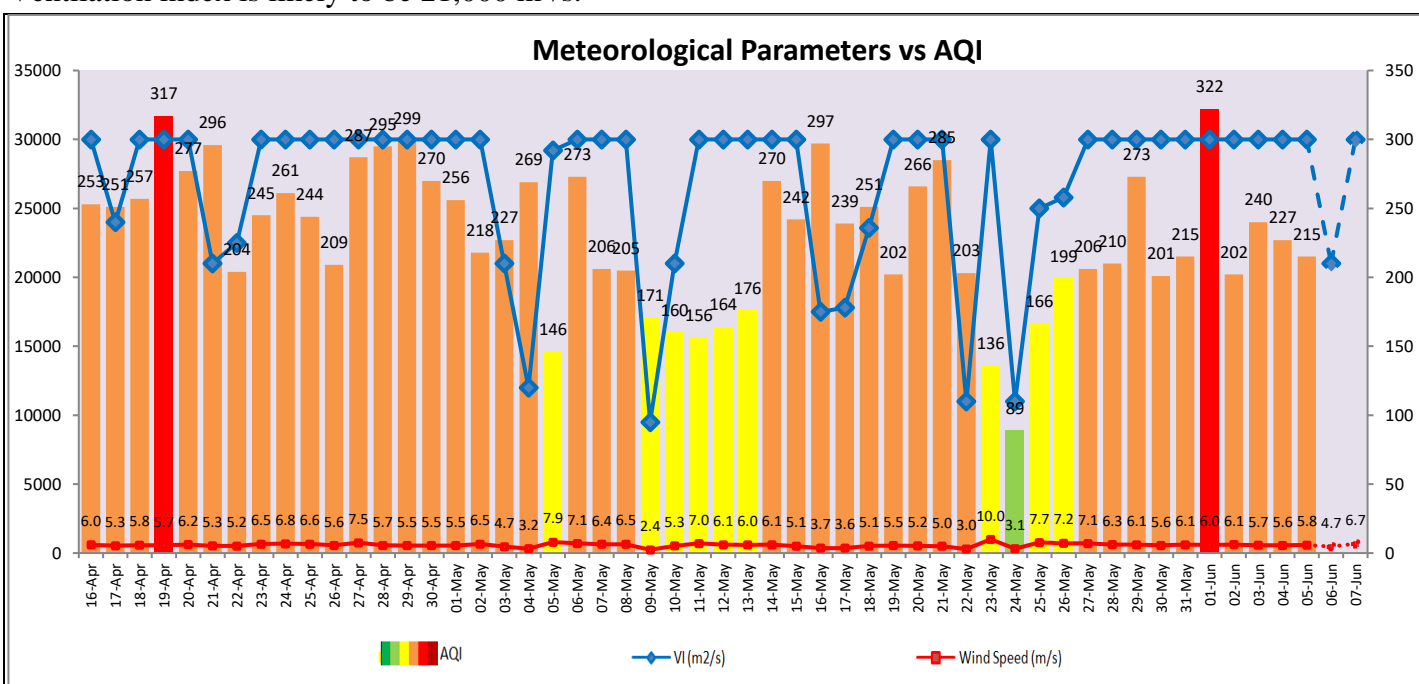
Parameters	June 06, 2022		June 07, 2022- June 08, 2022	
	Concentration	AQI Category	Concentration	AQI Category
PM ₁₀	237	Moderate	280	Poor
PM _{2.5}	71	Moderate	83	Moderate

Wind Forecast for Delhi:

	Wind speed (at surface) in km/h		Wind speed (at 900 m) in km/h	Wind Direction	
	As per IMD (at 17:30 hrs.)	As per windy.com (at 16:00 hrs.)	As per windy.com (at 16:00hrs)	As per IMD (at 17:30hrs.)	As per windy.com at 900m
June 06, 2022	24	14	23	W	W
June 07, 2022	24	18	29	W	W
June 08, 2022	24	15	26	WSW	W

IMD Alert for Tomorrow (06.06.2022):

The air quality over Delhi-NCT is likely to remain in Poor category on 06.06.2022. The predominant surface wind is likely to be coming from West/Southwest direction in Delhi with wind speed 16-24 kmph, mainly clear sky and strong surface winds (speed 20-30 kmph) during the day tomorrow. **Long range transported dust will impact air quality over parts of Rajasthan, Gujarat, MP and NCR during next two days.** Ventilation index is likely to be 21,000 m²/s.



Hotspots for Today

City	Station Name	AQI value	Air Quality	Prominent Pollutant
Delhi	Anand Vihar, Delhi - DPCC	344	Very Poor	PM ₁₀
	Mundka, Delhi - DPCC	322	Very Poor	PM ₁₀
	Bawana, Delhi - DPCC	285	Poor	PM ₁₀
	Rohini, Delhi - DPCC	273	Poor	PM ₁₀
	Dwarka-Sector 8, Delhi - DPCC	264	Poor	PM ₁₀
Gurugram	Vikas Sadan, Gurugram - HSPCB	266	Poor	PM _{2.5}
	Sector-51, Gurugram - HSPCB	258	Poor	PM ₁₀
Ghaziabad	Loni, Ghaziabad - UPPCB	349	Very Poor	PM ₁₀
	Vasundhara, Ghaziabad - UPPCB	247	Poor	PM ₁₀
Greater Noida	Knowledge Park - III, Greater Noida - UPPCB	241	Poor	PM ₁₀
Noida	Sector - 125, Noida - UPPCB	238	Poor	PM ₁₀
	Sector-116, Noida - UPPCB	234	Poor	PM ₁₀