



# Central Pollution Control Board

Air Quality Status for Delhi & NCR

Dated – November 04, 2022



## Current Air Quality Status:

### Air Quality Index (AQI) (Average of past 24 hours)

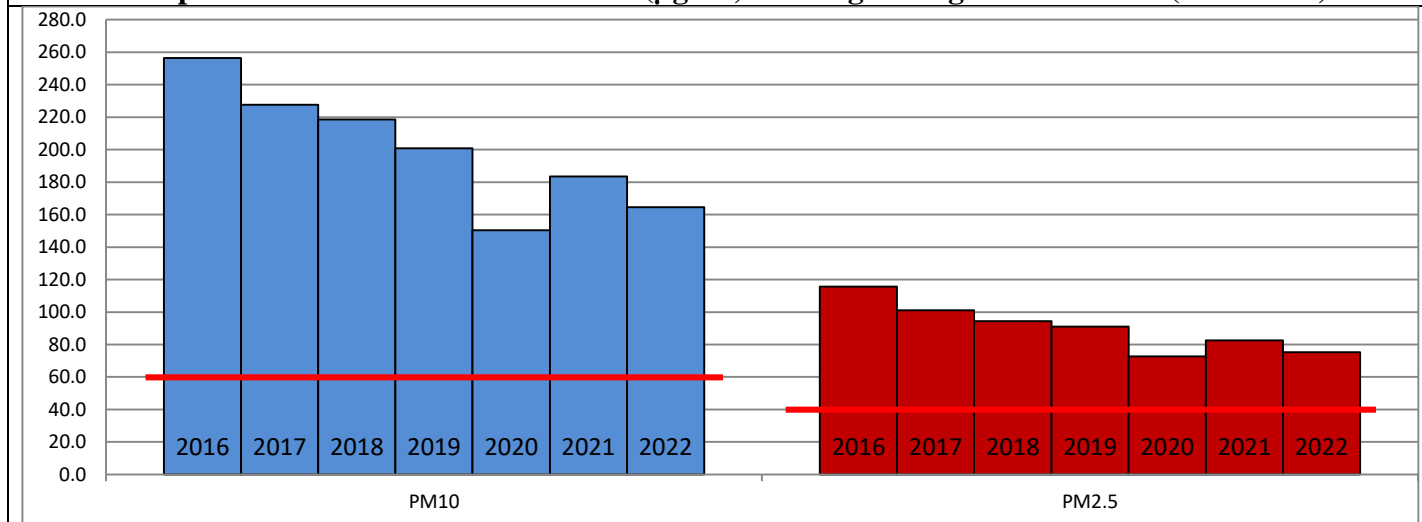
	Air Quality	AQI Value	Prominent Pollutant
Delhi	Severe	447 ↓	PM <sub>2.5</sub>
Faridabad	Severe	425 ↑	PM <sub>2.5</sub>
Ghaziabad	Severe	411 ↓	PM <sub>2.5</sub>
Greater Noida	Severe	425 ↓	PM <sub>2.5</sub>
Gurugram	Severe	416 ↓	PM <sub>2.5</sub>
Noida	Severe	406 ↓	PM <sub>2.5</sub>

\*Data available for 37 stations in Delhi today. # ↓ ↑ arrows indicate a decrease/increase as compared to the value on the previous day.

### Comparative status of AQI - Delhi from 01 January to 04 November 2016-2022

Category	Year	2016	2017	2018	2019	2020	2021	2022	2016	2017	2018	2019	2020	2021	2022
	No. of days	297	308	308	308	309	308	308							
Good (0–50)		0	2	0	2	5	1	3							
Satisfactory (51–100)		24	45	53	58	95	81	65	110	150	158	175	224	197	160
Moderate (101–200)		86	103	105	115	124	115	92							
Poor (201–300)		116	102	103	88	56	69	115							
Very Poor (301–400)		60	55	40	33	27	36	29	187	158	150	133	85	111	148
Severe (>401)		11	1	7	12	2	6	4							

### Comparative status of PM<sub>10</sub> and PM<sub>2.5</sub> (µg/m<sup>3</sup>) running average – Till Nov 03 (2016-2022)



### Hotspots for Today:

\*Details given overleaf

Delhi	Bawana, Jahangirpuri, Narela, Alipur, Mundka	Ghaziabad	Vasundhara
Faridabad	Sector- 16A, Sector 11	Greater Noida	Knowledge Park-III
Gurugram	NISE Gwal Pahari, Teri Gram	Noida	Sector-116, Sector - 62

### Forecast by IITM (Delhi):

	Nov 05, 2022		Nov 06, 2022- Nov 07, 2022	
	Concentration	AQI Category	Concentration	AQI Category
PM <sub>10</sub>	401	Very Poor	378	Very Poor
PM <sub>2.5</sub>	253	Severe	239	Very Poor

## Wind Forecast for Delhi:

	Wind speed (at surface) in km/h		Wind speed (at 900 m) in km/h	Wind Direction	
	As per IMD (range)	As per windy.com (at 16:00 hrs.)	As per windy.com (at 16:00hrs)	As per IMD	As per windy.com at 900m
Nov 05, 2022	08-18	08	10	ESE	SE
Nov 06, 2022	10-18	07	08	SE	W
Nov 07, 2022	08-14	26	09	E	NW

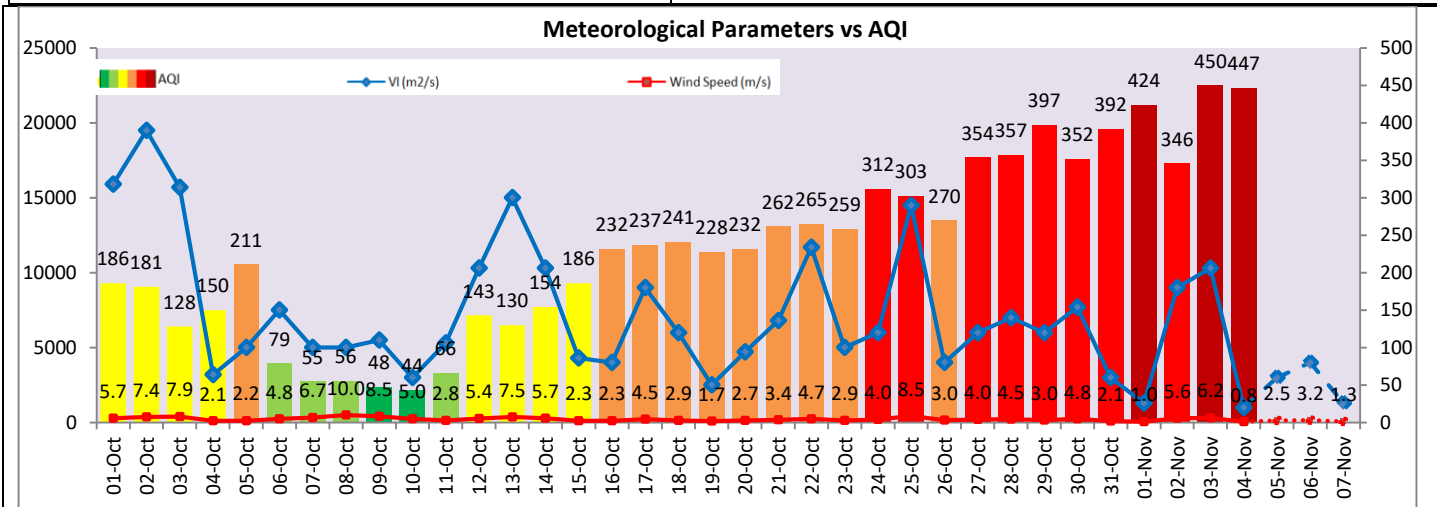
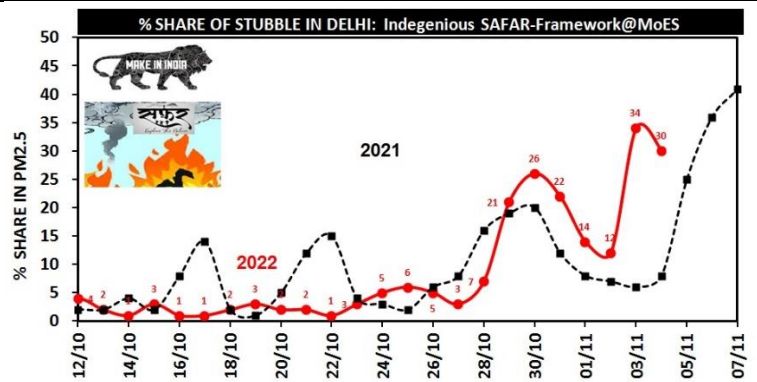
## IMD Alert for Tomorrow (05.11.2022):

The air quality is likely to improve from Severe to Very Poor category on 05.11.2022. The predominant surface wind is likely to be coming from East-Southeast direction in Delhi with wind speed 08-18 kmph, partly cloudy sky and mist/shallow fog in the morning tomorrow. Ventilation index is likely to be 3,000 m<sup>2</sup>/s.

## Active Fire Events (AFE):

Date	Punjab		Haryana	
	Nos. on the day	Total since September 15	Nos. on the day	Total since September 15
04.11.2022	2437	26583	63	2440
04.11.2021	3032	23610	228	3666

\* As per IITM, the impact of stubble burning is ~30%.



## Hotspots for Today

City	Station Name	AQI value	Air Quality	Prominent Pollutant
Delhi	Bawana, Delhi - DPCC	489	Severe	PM <sub>2.5</sub>
	Jahangirpuri, Delhi - DPCC	487	Severe	PM <sub>2.5</sub>
	Narela, Delhi - DPCC	486	Severe	PM <sub>2.5</sub>
	Alipur, Delhi - DPCC	483	Severe	PM <sub>2.5</sub>
	Mundka, Delhi - DPCC	483	Severe	PM <sub>2.5</sub>
Faridabad	Sector 11, Faridabad - HSPCB	477	Severe	PM <sub>2.5</sub>
	Sector- 16A, Faridabad - HSPCB	471	Severe	PM <sub>2.5</sub>
Gurugram	Teri Gram, Gurugram - HSPCB	453	Severe	PM <sub>2.5</sub>
	NISE Gwal Pahari, Gurugram - IMD	444	Severe	PM <sub>2.5</sub>
Ghaziabad	Vasundhara, Ghaziabad - UPPCB	444	Severe	PM <sub>2.5</sub>
Greater Noida	Knowledge Park - III, Greater Noida - UPPCB	448	Severe	PM <sub>2.5</sub>
Noida	Sector - 62, Noida - IMD	466	Severe	PM <sub>2.5</sub>
	Sector-116, Noida - UPPCB	418	Severe	PM <sub>2.5</sub>