



Central Pollution Control Board

Air Quality Status for Delhi & NCR

Dated – November 04, 2021



Current Air Quality Status:

Air Quality Index (AQI) (Average of past 24 hours)

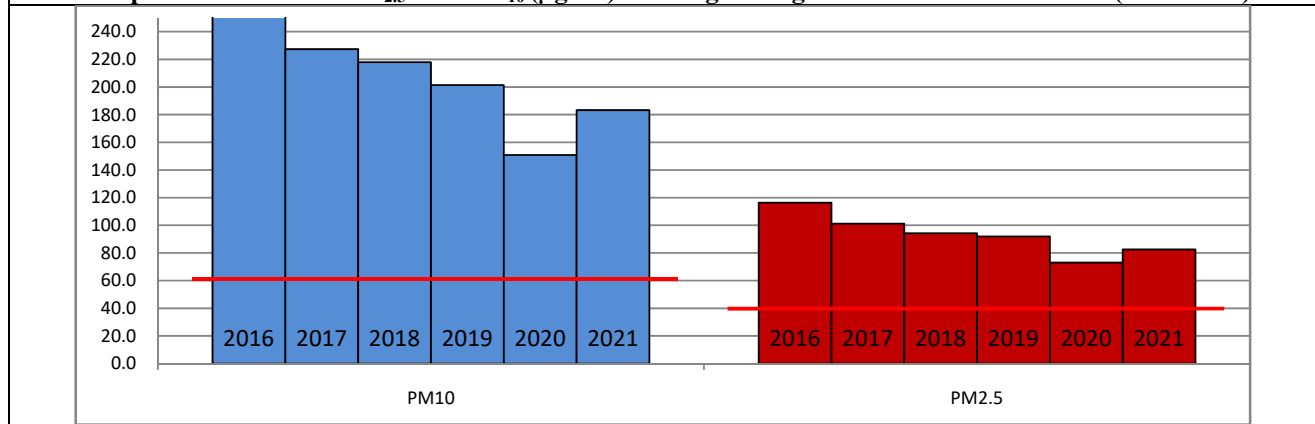
	Air Quality	AQI Value	Prominent Pollutant
Delhi	Very Poor	382 ↓	PM ₁₀ , PM _{2.5}
Faridabad	Very Poor	399 ↑	PM ₁₀ , PM _{2.5}
Ghaziabad	Severe	419 ↑	PM _{2.5}
Greater Noida	Very Poor	322 ↑	PM _{2.5}
Gurugram	Very Poor	395 ↓	PM _{2.5}
Noida	Severe	404 ↑	PM ₁₀ , PM _{2.5}

*Data available for 37 stations in Delhi today. # ↓, ↑ arrows indicate increase/decrease as compared to value on the previous day

Comparative status of AQI - Delhi from 01 January to 04 November 2016-2021

Category	Year	2016	2017	2018	2019	2020	2021	2016	2017	2018	2019	2020	2021
	No. of days	297	308	308	308	309	308						
Good (0–50)		0	2	0	2	5	1						
Satisfactory (51–100)		25	45	53	58	95	72	108	150	158	175	224	197
Moderate (101–200)		83	103	105	115	124	124						
Poor (201–300)		116	102	103	88	56	69						
Very Poor (301–400)		62	55	40	33	27	36	189	158	150	133	85	111
Severe (>401)		11	1	7	12	2	6						

Comparative status of PM_{2.5} and PM₁₀ (µg/m³) running average - Delhi till November 03 (2016-2021)



Hotspots for Today:

*Details given overleaf

Delhi	Jahangirpuri, Wazirpur, Nehru Nagar, Bawana, Alipur	Greater Noida	Knowledge Park - V
Faridabad	Sector 16A, Sector 11	Gurugram	Sector-51, Teri Gram
Ghaziabad	Loni, Sanjay Nagar	Noida	Sector 116, Sector 62

Forecast by IITM:

Parameters	November 05, 2021		November 06, 2021– November 07, 2021	
	Concentration	AQI Category	Concentration	AQI Category
PM ₁₀	447	Severe	288	Poor
PM _{2.5}	270	Severe	174	Very Poor

▪ **Wind Forecast for Delhi:**

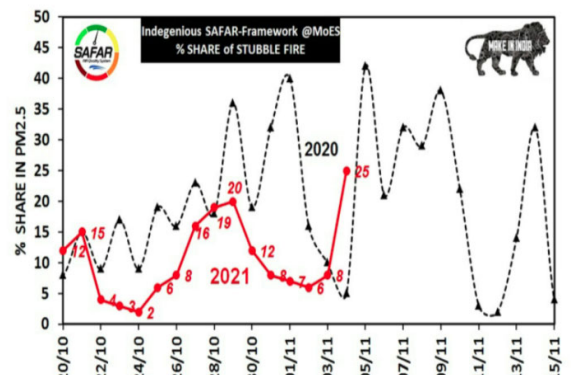
Dates	Wind speed (at surface) in km/h		Wind speed (at 900 m) in km/h	Wind Direction	
	As per IMD (at 17:30 hrs.)	As per windy.com (at 16:00 hrs.)	As per windy.com (at 16:00hrs)	As per IMD (at 17:30hrs.)	As per windy.com at 900m
November 05, 2021	10	03	12	NW	NW
November 06, 2021	12	09	32	NW	NW
November 07, 2021	10	07	20	NW	NW

▪ **IMD Alert for Tomorrow (05.11.2021):**

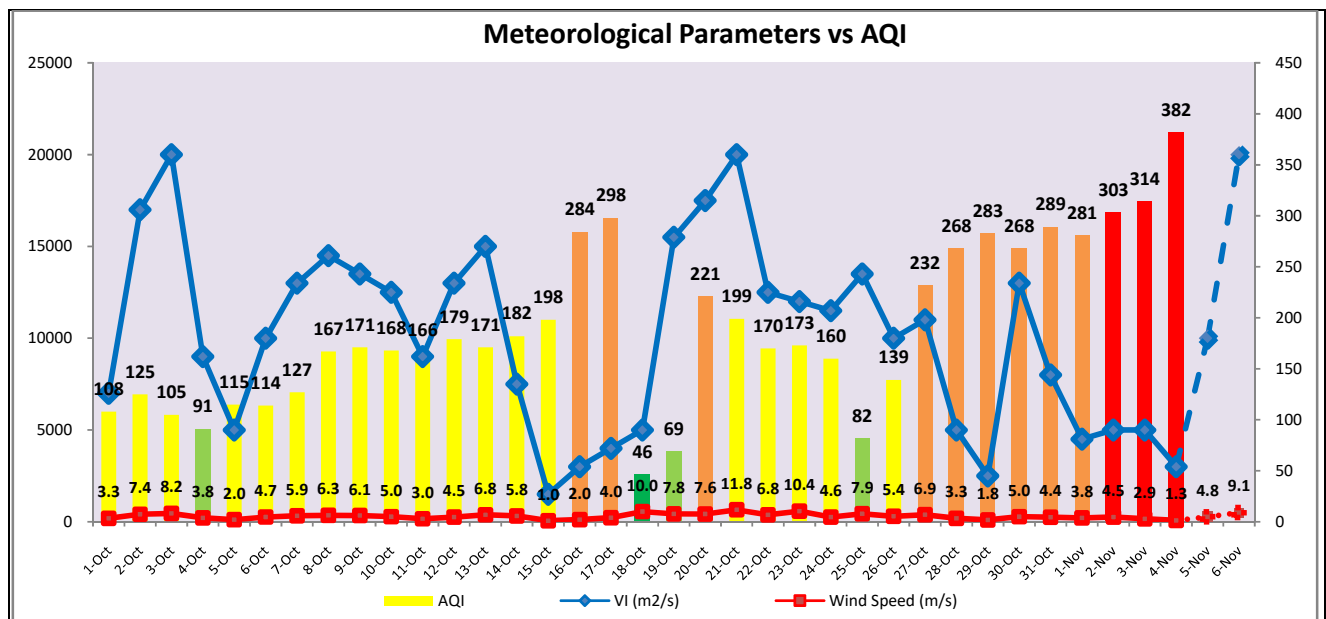
The air quality is likely to deteriorate further on 05.11.2021 to remain in Very Poor category and may slip into Severe category if significant fire crackers burn on 4th. The predominant surface wind is likely to be coming from Northwest directions of Delhi with wind speed of 04-10 kmph and partly cloudy sky, shallow to moderate fog in morning. Ventilation index is likely to be 10,000m²/s.

▪ **Active Fire Events (AFE)**

Date	Punjab		Haryana	
	Nos. on the day	Total since September 21	Nos. on the day	Total since September 21
03.11.2021	2512	20578	197	3438
03.11.2020	2818	43994	93	2699



The contribution of biomass burning in PM_{2.5} concentration is likely to increase to approximately 20% on 05.11.2021 and 06.11.2021 as winds are favourable for transportation of pollutants.



▪ **Hotspots for Today**

City	Station Name	AQI value	Air Quality	Prominent Pollutant
Delhi	Jahangirpuri, Delhi - DPCC	453	Severe	PM _{2.5}
	Wazirpur, Delhi - DPCC	439	Severe	PM ₁₀
	Nehru Nagar, Delhi - DPCC	423	Severe	PM _{2.5}
	Bawana, Delhi - DPCC	416	Severe	PM _{2.5}
	Alipur, Delhi - DPCC	415	Severe	PM _{2.5}
Faridabad	Sector 11, Faridabad - HSPCB	454	Severe	PM _{2.5}
	Sector- 16A, Faridabad - HSPCB	385	Very Poor	PM _{2.5}
Gurugram	Sector-51, Gurugram - HSPCB	433	Severe	PM ₁₀
	Teri Gram, Gurugram - HSPCB	378	Very Poor	PM _{2.5}
Ghaziabad	Loni, Ghaziabad - UPPCB	456	Severe	PM _{2.5}
	Sanjay Nagar, Ghaziabad - UPPCB	406	Severe	PM ₁₀
Greater Noida	Knowledge Park - V, Greater Noida - UPPCB	335	Very Poor	PM _{2.5}
Noida	Sector - 62, Noida - IMD	417	Severe	PM _{2.5}
	Sector-116, Noida - UPPCB	399	Very Poor	PM ₁₀