



Central Pollution Control Board

Air Quality Status for Delhi & NCR

Dated – June 04, 2022



Current Air Quality Status:

Air Quality Index (AQI) (Average of past 24 hours)

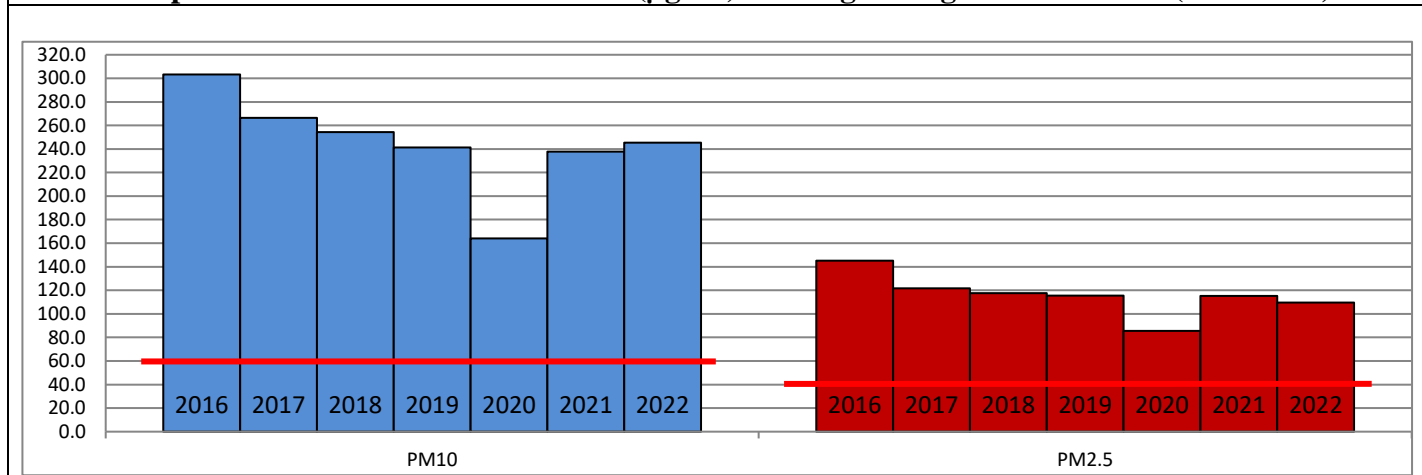
	Air Quality	AQI Value	Prominent Pollutant
Delhi	Poor	227 ↓	PM ₁₀
Faridabad	Poor	248 ↓	PM _{2.5} , PM ₁₀
Ghaziabad	Poor	258 ↓	PM ₁₀ , O ₃
Greater Noida	Poor	242 ↓	PM ₁₀
Gurugram	Poor	240 ↓	PM _{2.5} , PM ₁₀
Noida	Poor	239 ↓	PM ₁₀

*Data available for 31 stations in Delhi today. # ↓, ↑ arrows indicate a decrease/increase as compared to value on the previous day.

Comparative status of AQI - Delhi from 01 January to 04 June 2016-2022

Category	Year	2016	2017	2018	2019	2020	2021	2022	2016	2017	2018	2019	2020	2021	2022
	No. of days	152	155	155	155	156	155	155							
Good (0–50)		0	0	0	0	1	0	0							
Satisfactory (51–100)		0	0	1	2	29	6	4	15	36	48	60	102	63	37
Moderate (101–200)		15	36	47	58	72	57	33							
Poor (201–300)		78	83	77	62	37	54	98							
Very Poor (301–400)		53	36	27	26	15	32	19	137	119	107	95	54	92	118
Severe (>401)		6	0	3	7	2	6	1							

Comparative status of PM_{2.5} and PM₁₀ (µg/m³) running average – Till June 02 (2016-2022)



Hotspots for Today:

*Details given overleaf

Delhi	Anand Vihar, Dwarka Sector-8, Mundka, Bawana, Alipur	Gurugram	Sector-51
Faridabad	New Industrial Town	Greater Noida	Knowledge Park-V
Ghaziabad	Loni, Vasundhara	Noida	Sector-125, Sector-1

Forecast by IITM (Delhi):

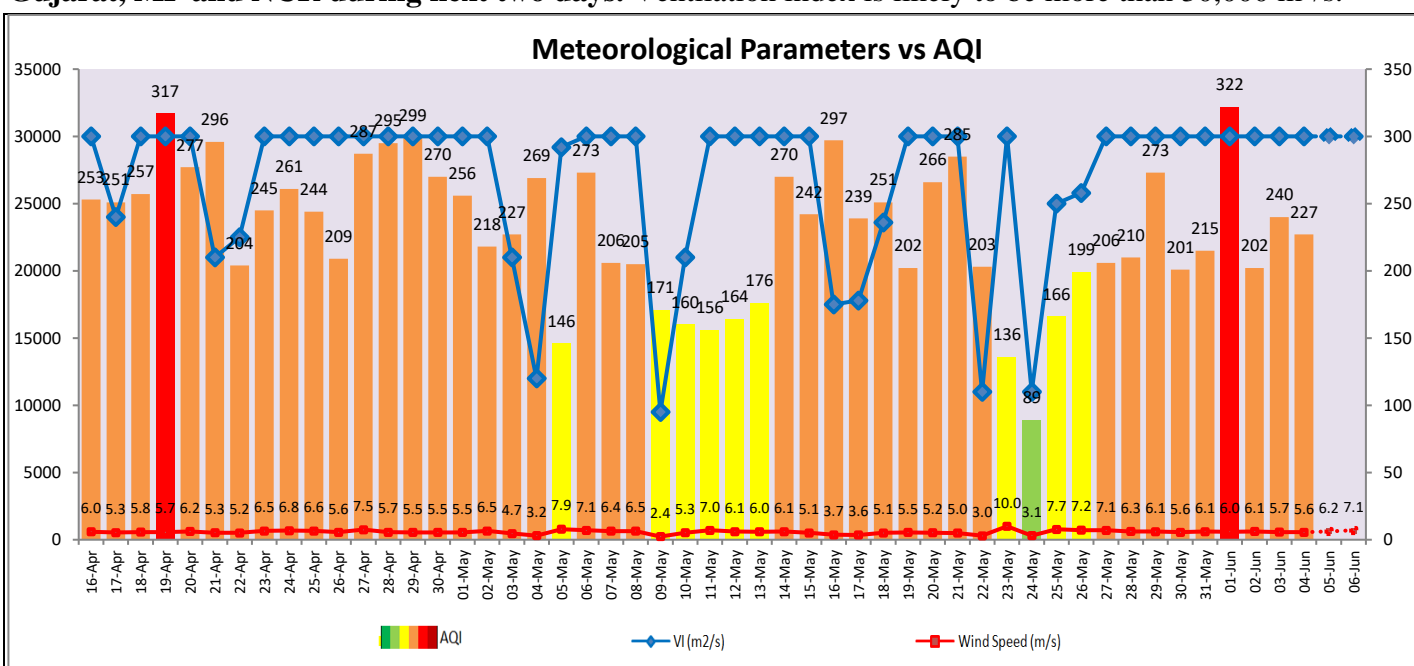
Parameters	June 05, 2022		June 06, 2022- June 07, 2022	
	Concentration	AQI Category	Concentration	AQI Category
PM ₁₀	268	Poor	316	Poor
PM _{2.5}	87	Moderate	102	Poor

Wind Forecast for Delhi:

	Wind speed (at surface) in km/h		Wind speed (at 900 m) in km/h	Wind Direction	
	As per IMD (at 17:30 hrs.)	As per windy.com (at 16:00 hrs.)	As per windy.com (at 16:00hrs)	As per IMD (at 17:30hrs.)	As per windy.com at 900m
June 05, 2022	18	06	12	W	W
June 06, 2022	15	14	23	W	W
June 07, 2022	18	16	25	W	W

IMD Alert for Tomorrow (05.06.2022):

The air quality is likely to deteriorate from 05.06.2022 to 06.06.2022 but will remain in Poor category. The predominant surface wind is likely to be coming from West direction in Delhi with wind speed 15-20 kmph, partly cloudy sky, **heat wave conditions at isolated places** and strong surface winds (speed 20-30 kmph) during the day tomorrow. **Long range transported dust will impact air quality over parts of Rajasthan, Gujarat, MP and NCR during next two days.** Ventilation index is likely to be more than 30,000 m²/s.



Hotspots for Today

City	Station Name	AQI value	Air Quality	Prominent Pollutant
Delhi	Anand Vihar, Delhi - DPCC	344	Very Poor	PM ₁₀
	Mundka, Delhi - DPCC	322	Very Poor	PM ₁₀
	Dwarka-Sector 8, Delhi - DPCC	314	Very Poor	PM ₁₀
	Bawana, Delhi - DPCC	276	Poor	PM ₁₀
	Alipur, Delhi - DPCC	263	Poor	PM ₁₀
Faridabad	New Industrial Town, Faridabad - HSPCB	291	Poor	PM ₁₀
Gurugram	Sector-51, Gurugram - HSPCB	270	Poor	PM ₁₀
Ghaziabad	Loni, Ghaziabad - UPPCB	344	Very Poor	PM ₁₀
	Vasundhara, Ghaziabad - UPPCB	252	Poor	PM ₁₀
Greater Noida	Knowledge Park - V, Greater Noida - UPPCB	247	Poor	PM ₁₀
Noida	Sector - 125, Noida - UPPCB	253	Poor	PM ₁₀
	Sector-1, Noida - UPPCB	240	Poor	PM ₁₀