



Central Pollution Control Board

Air Quality Status for Delhi & NCR

Dated – December 03, 2022



Current Air Quality Status:

Air Quality Index (AQI) (Average of past 24 hours)

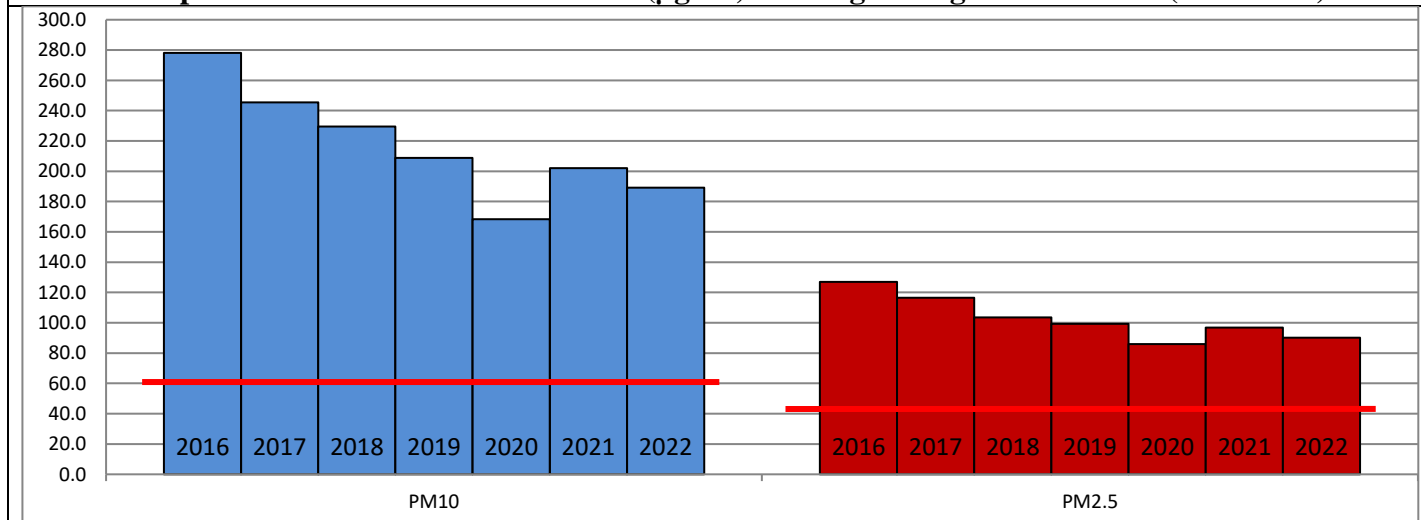
	Air Quality	AQI Value	Prominent Pollutant
Delhi	Very Poor	370 ↑	PM _{2.5}
Faridabad	Very Poor	349 ↑	PM _{2.5}
Ghaziabad	Very Poor	353 ↑	PM _{2.5}
Greater Noida	Very Poor	366 ↓	PM ₁₀ , PM _{2.5}
Gurugram	Poor	300 ↓	PM _{2.5}
Noida	Very Poor	355 ↑	PM _{2.5}

*Data available for 36 stations in Delhi today. # ↓ ↑ arrows indicate a decrease/increase as compared to the value on the previous day.

Comparative status of AQI - Delhi from 01 January to 03 December 2016-2022

Category	Year	2016	2017	2018	2019	2020	2021	2022	2016	2017	2018	2019	2020	2021	2022
	No. of days	326	337	337	337	338	337	337							
Good (0–50)		0	2	0	2	5	1	3							
Satisfactory (51–100)		24	45	53	59	95	81	65	110	150	158	179	226	197	160
Moderate (101–200)		86	103	105	118	126	115	92							
Poor (201–300)		119	105	111	99	65	70	127							
Very Poor (301–400)		77	74	56	43	36	52	46	216	187	179	158	112	140	177
Severe (>401)		20	8	12	16	11	18	4							

Comparative status of PM₁₀ and PM_{2.5} (µg/m³) running average – Till Dec 01 (2016-2022)



Hotspots for Today:

*Details given overleaf

Delhi	Jahangirpuri, Mundka, Narela, Nehru Nagar, Anand Vihar	Ghaziabad	Vasundhara, Loni
Faridabad	Sector- 16A, New Industrial Town	Greater Noida	Knowledge Park-V
Gurugram	Teri Gram, Vikas Sadan	Noida	Sector – 62, Sector-116

Forecast by IITM (Delhi):

	Dec 04, 2022		Dec 05, 2022- Dec 06, 2022	
	Concentration	AQI Category	Concentration	AQI Category
PM ₁₀	312	Poor	343	Poor
PM _{2.5}	213	Very Poor	234	Very Poor

Wind Forecast for Delhi:

	Wind speed (at surface) in km/h		Wind speed (at 900 m) in km/h	Wind Direction	
	As per IMD (range)	As per windy.com (at 16:00 hrs.)	As per windy.com (at 16:00hrs)	As per IMD	As per windy.com at 900m
Dec 04, 2022	06-08	10	14	NW	NW
Dec 05, 2022	Upto 08	10	18	NW	NW
Dec 06, 2022	10-14	11	42	NW	NW

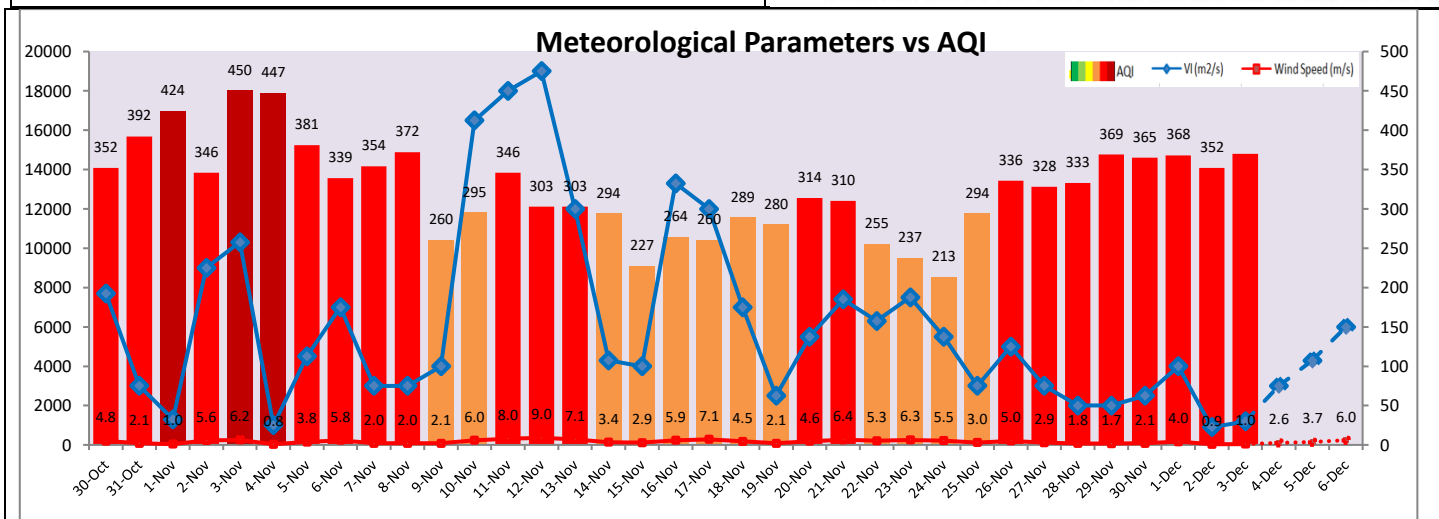
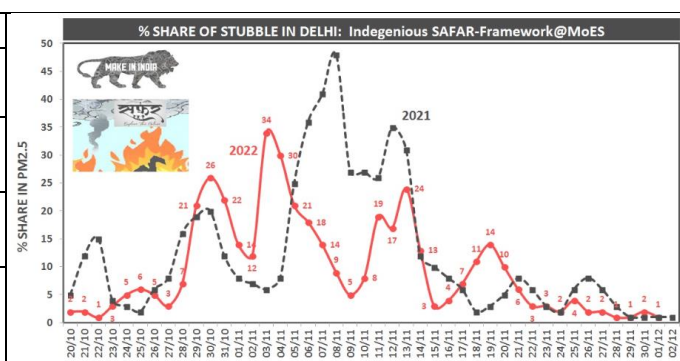
IMD Alert for Tomorrow (04.12.2022):

The air quality is likely to remain in Very Poor category on 04.12.2022. The predominant surface wind is likely to be coming from Northwest directions in Delhi with wind speed 06-08 kmph, mainly clear sky and mist/shallow fog in the morning tomorrow. Ventilation index is likely to be 3,000 m²/s.

Active Fire Events (AFEs):

Date	Punjab		Haryana	
	Nos. on the day	Total since September 15	Nos. on the day	Total since September 15
30.11.2022	15	49922	14	3661
30.11.2021	5	71304	18	6987

* As per IITM, the contribution of stubble burning to PM_{2.5} in Delhi is ~01%.



Hotspots for Today

City	Station Name	AQI value	Air Quality	Prominent Pollutant
Delhi	Mundka, Delhi - DPCC	419	Severe	PM _{2.5}
	Narela, Delhi - DPCC	415	Severe	PM _{2.5}
	Nehru Nagar, Delhi - DPCC	415	Severe	PM _{2.5}
	Jahangirpuri, Delhi - DPCC	413	Severe	PM ₁₀
	Anand Vihar, Delhi - DPCC	412	Severe	PM _{2.5}
Faridabad	Sector- 16A, Faridabad - HSPCB	412	Severe	PM _{2.5}
	New Industrial Town, Faridabad - HSPCB	400	Very Poor	PM ₁₀
Gurugram	Vikas Sadan, Gurugram - HSPCB	325	Very Poor	PM _{2.5}
	Teri Gram, Gurugram - HSPCB	321	Very Poor	PM _{2.5}
Ghaziabad	Vasundhara, Ghaziabad - UPPCB	381	Very Poor	PM _{2.5}
	Loni, Ghaziabad - UPPCB	378	Very Poor	PM _{2.5}
Greater Noida	Knowledge Park - V, Greater Noida - UPPCB	372	Very Poor	PM ₁₀
Noida	Sector - 62, Noida - IMD	387	Very Poor	PM _{2.5}
	Sector-116, Noida - UPPCB	373	Very Poor	PM _{2.5}