



Central Pollution Control Board

Air Quality Status for Delhi & NCR

Dated – November 03, 2023



Current Air Quality Status:

▪ Air Quality Index (AQI) (Average of past 24 hours at 4 PM) in comparison with last two years

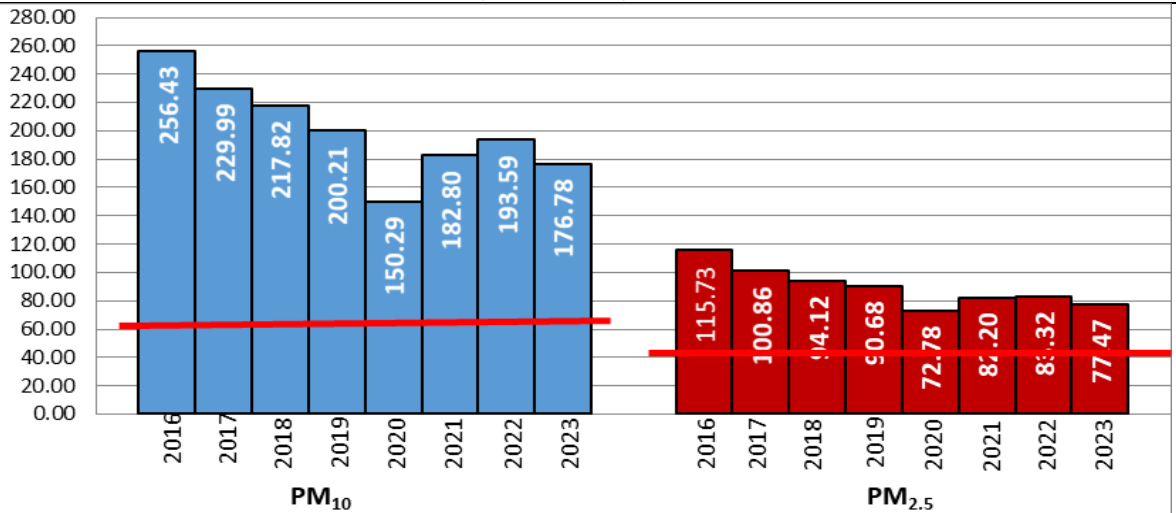
	2023			2022			2021(Covid- Year)		
	Air Quality	AQI Value	Prominent Pollutant	Air Quality	AQI Value	Prominent Pollutant	Air Quality	AQI Value	Prominent Pollutant
Delhi	Severe	468 ↑	PM2.5,PM10	Severe	450 ↑	PM10, PM2.5	Very Poor	314 ↑	PM10, PM2.5
Faridabad	Severe	460 ↑	PM10,PM2.5	Very Poor	373 ↑	PM10, PM2.5	Very Poor	337 ↑	PM10, PM2.5
Ghaziabad	Severe	410 ↑	PM2.5	Severe	416 ↑	PM2.5	Very Poor	353 ↑	PM2.5
Greater Noida	Severe	494 ↑	PM2.5	Severe	418 ↑	PM10, PM2.5	Poor	286 ↑	PM10, PM2.5
Gurugram	Very Poor	367 ↑	PM2.5	Severe	430 ↑	PM2.5	Very Poor	330 ↑	PM2.5
Noida	Severe	440 ↑	PM2.5	Severe	423 ↑	PM10, PM2.5	Very Poor	327 ↑	PM2.5

*Data available for 35(2023), 37(2022), 31(2021) stations in Delhi today. # ↑, ↓ arrows indicate a decrease/increase as compared to the value on the previous day.

▪ Comparative status of AQI - Delhi from 01 January to 03 November 2016-2023

Category	Year	2016	2017	2018	2019	2020	2021	2022	2023	2016	2017	2018	2019	2020	2021	2022	2023
	No. of days	296	307	307	307	308	307	307	307	110	151	156	175	224	197	160	206
Good (0–50)		0	2	0	2	4	1	3	1								
Satisfactory (51–100)		24	45	53	58	96	72	65	60								
Moderate (101–200)		86	104	103	115	124	124	92	145								
Poor (201–300)		116	101	103	89	56	69	115	69								
Very Poor (301–400)		59	52	40	33	26	35	29	28	186	156	151	132	84	110	147	101
Severe (>401)		11	3	8	10	2	6	3	4								

Comparative status of PM₁₀ and PM_{2.5} (µg/m³) running average - Till November 02 (2016-2023)



▪ Daily Average of Particulates in Delhi

Date ↓ / parameter →	PM _{2.5} (µg/m ³)	PM ₁₀ (µg/m ³)
02- November -2023	356	579

Hotspots for Today:

*Details given below

Delhi	Okhla Phase-2, R K Puram, Sirifort, Major Dhyam Chand National Stadium, Dwarka-Sector 8	Ghaziabad	Loni
Faridabad	New Industrial Town, Sector- 16A	Greater Noida	Knowledge Park III
Gurugram	NISE Gwal Pahari	Noida	Sector – 62

Forecast by IITM (Delhi):

	Nov 04, 2023		Nov 05, 2023		Nov 06, 2023	
	Concentration	AQI Category	Concentration	AQI Category	Concentration	AQI Category
PM ₁₀	450-470	Severe	410-420	Severe	455-465	Severe
PM _{2.5}	309-328	Severe	276-289	Severe	298-311	Severe

Wind Forecast for Delhi:

	Wind speed (at surface) in km/h		Wind speed (at 900 m) in km/h	Wind Direction	
	As per IMD (range)	As per windy.com (at 16:00 hrs.)	As per windy.com (at 16:00hrs)	As per IMD	As per windy.com at 900m
Nov 04 , 2023	04-06	07	17	SE/E	NW
Nov 05 , 2023	Up to 06	09	14	N/E	NW
Nov 06 , 2023	02-06	06	06	VAR	W

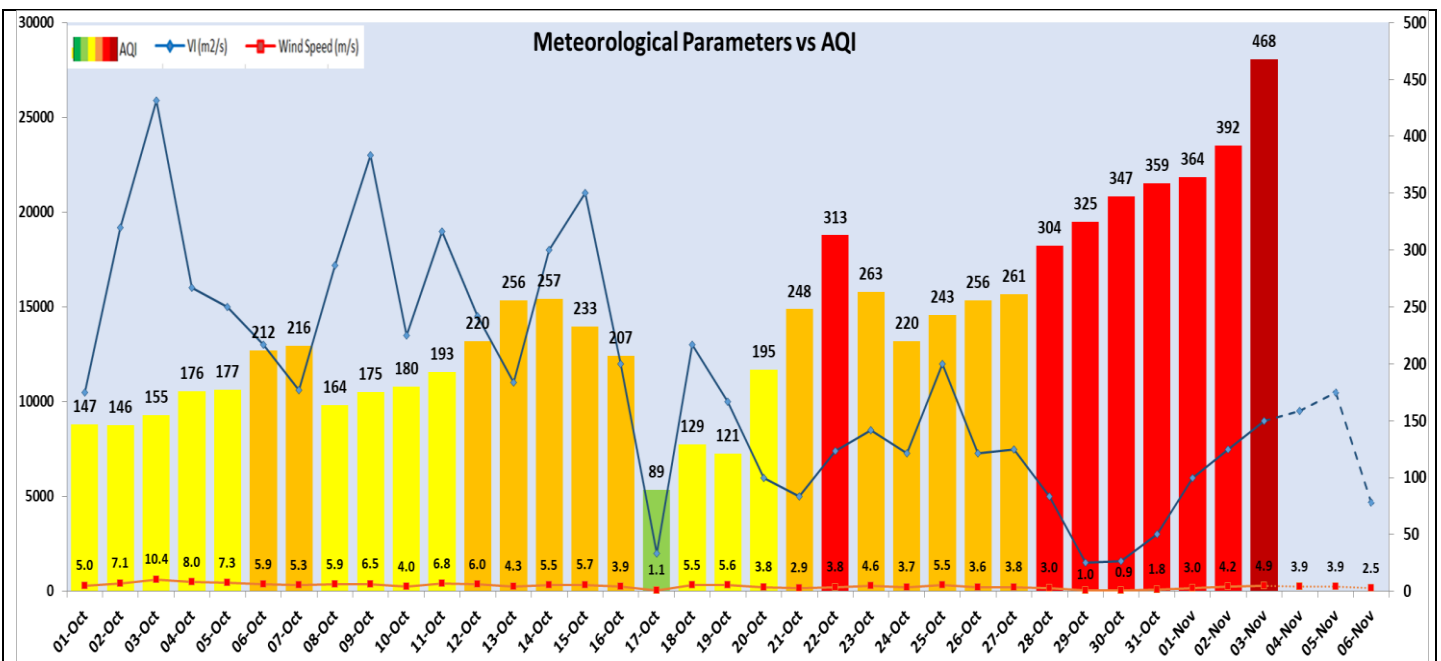
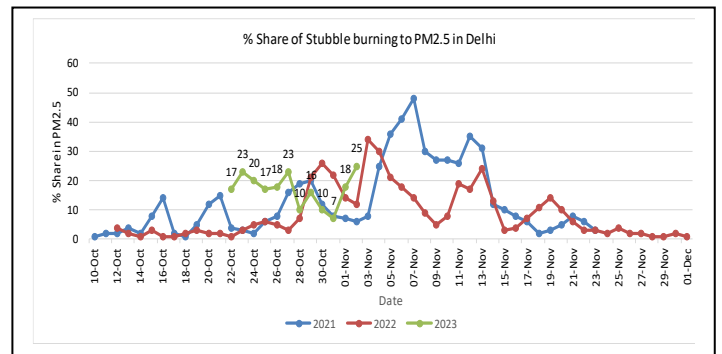
IMD Alert for Tomorrow (04.11.2023):

The air quality is likely to improve marginally but remain in Severe category from 04.11.2023 to 06.11.2023. The predominant surface wind is likely to be calm during morning hours, coming from Southeast/East directions in Delhi with wind speed 04-06 kmph, mainly clear sky and shallow fog in the morning on 04.11.2023. Ventilation index is likely to be 9500 m²/s.

Active Fire Events (AFEs):

Date	Punjab		Haryana	
	Nos. on the day	Total since September 15	Nos. on the day	Total since September 15
02.11.2023	1668	11262	48	1344
02.11.2022	3634	21480	166	2249
02.11.2021	3001	18066	203	3241

* As per IITM, the impact of stubble burning is ~25 %.



▪ **Hotspots for Today**

City	Station Name	AQI value	Air Quality	Prominent Pollutant
Delhi	Okhla Phase-2, Delhi - DPCC	499	Severe	PM _{2.5}
	R K Puram, Delhi - DPCC	498	Severe	PM _{2.5}
	Sirifort, Delhi - CPCB	498	Severe	PM _{2.5}
	Major Dhyan Chand National Stadium, Delhi - DPCC	495	Severe	PM _{2.5}
	Dwarka-Sector 8, Delhi - DPCC	493	Severe	PM _{2.5}
Faridabad	New Industrial Town, Faridabad - HSPCB	491	Severe	PM ₁₀
	Sector- 16A, Faridabad - HSPCB	490	Severe	PM _{2.5}
Gurugram	NISE Gwal Pahari, Gurugram - IMD	468	Severe	PM _{2.5}
Ghaziabad	Loni, Ghaziabad - UPPCB	477	Severe	PM _{2.5}
Greater Noida	Knowledge Park - III, Greater Noida - UPPCB	497	Severe	PM _{2.5}
Noida	Sector - 62, Noida - IMD	478	Severe	PM _{2.5}