



Central Pollution Control Board

Air Quality Status for Delhi & NCR

Dated – November 03, 2021



Current Air Quality Status:

Air Quality Index (AQI) (Average of past 24 hours)

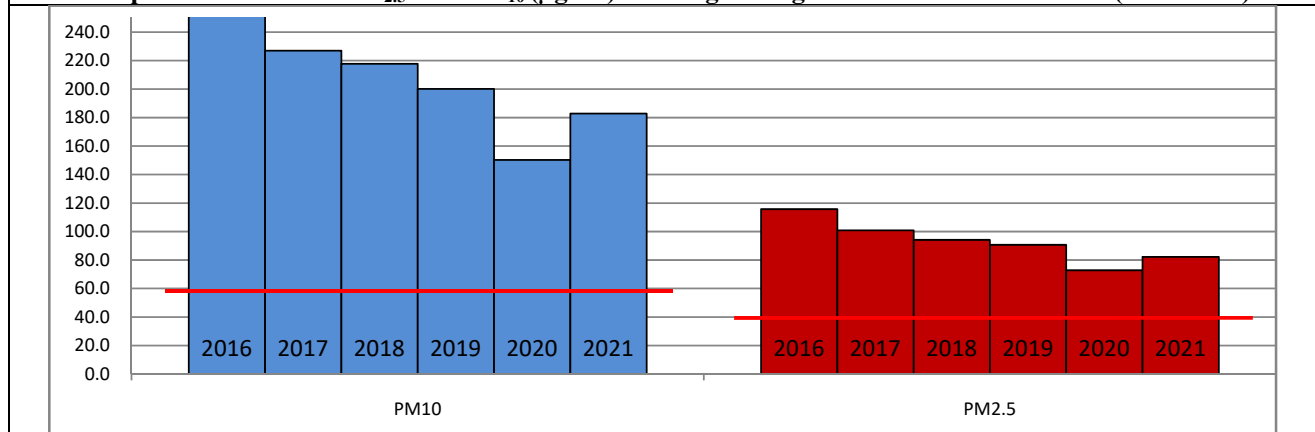
	Air Quality	AQI Value	Prominent Pollutant
Delhi	Very Poor	314 ↓	PM ₁₀ , PM _{2.5}
Faridabad	Very Poor	337 ↑	PM ₁₀ , PM _{2.5}
Ghaziabad	Very Poor	353 ↑	PM _{2.5}
Greater Noida	Poor	286 ↑	PM ₁₀ , PM _{2.5}
Gurugram	Very Poor	330 ↑	PM _{2.5}
Noida	Very Poor	327 ↑	PM _{2.5}

*Data available for 31 stations in Delhi today. # ↑ ↓ arrows indicate increase/decrease as compared to value on the previous day

Comparative status of AQI - Delhi from 01 January to 03 November 2016-2021

Category	Year	2016	2017	2018	2019	2020	2021	2016	2017	2018	2019	2020	2021
	No. of days	296	307	307	307	308	307						
Good (0–50)		0	2	0	2	5	1						
Satisfactory (51–100)		25	45	53	58	95	72	108	150	157	175	224	197
Moderate (101–200)		83	103	104	115	124	124						
Poor (201–300)		116	102	103	88	56	69						
Very Poor (301–400)		61	54	40	33	26	35	188	157	150	132	84	110
Severe (>401)		11	1	7	11	2	6						

Comparative status of PM_{2.5} and PM₁₀ (µg/m³) running average - Delhi till November 02 (2016-2021)



Hotspots for Today:

*Details given overleaf

Delhi	Wazirpur, Narela, Alipur, Sonia Vihar, Jahangirpuri	Greater Noida	Knowledge Park - V
Faridabad	Sector 16A, Sector 11	Gurugram	Sector 51, Teri Gram
Ghaziabad	Loni, Sanjay Nagar	Noida	Sector 116, Sector 125

Forecast by IITM:

Parameters	November 04, 2021		November 05, 2021– November 06, 2021	
	Concentration	AQI Category	Concentration	AQI Category
PM ₁₀	334	Poor	295	Poor
PM _{2.5}	172	Very Poor	157	Very Poor

▪ **Wind Forecast for Delhi:**

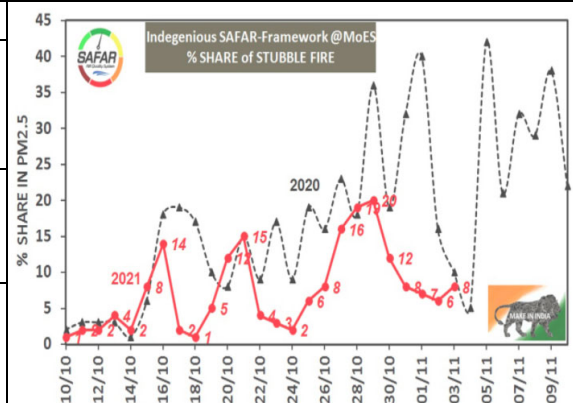
Dates	Wind speed (at surface) in km/h		Wind speed (at 900 m) in km/h	Wind Direction	
	As per IMD (at 17:30 hrs.)	As per windy.com (at 16:00 hrs.)	As per windy.com (at 16:00hrs)	As per IMD (at 17:30hrs.)	As per windy.com at 900m
November 04, 2021	06	08	07	NE	W
November 05, 2021	08	07	13	W	NW
November 06, 2021	12	09	29	NW	NW

▪ **IMD Alert for Tomorrow (04.11.2021):**

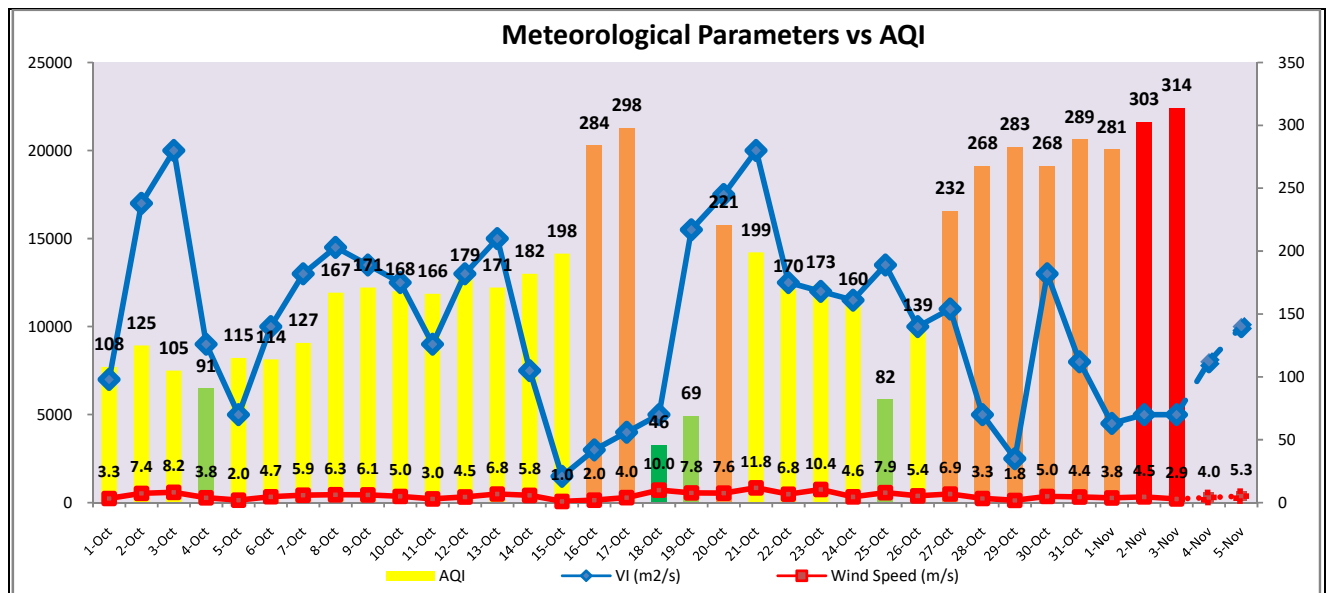
The air quality is likely to deteriorate on 04.11.2021 but remain in Very Poor category. The predominant surface wind is likely to be coming from East/Northeast directions of Delhi with wind speed of 06-08 kmph, mainly clear sky and mist in the morning. Ventilation index is likely to be 8,000m²/s.

▪ **Active Fire Events (AFE)**

Date	Punjab		Haryana	
	Nos. on the day	Total since September 21	Nos. on the day	Total since September 21
02.11.2021	3001	18066	203	3241
02.11.2020	4098	41176	111	2606



The contribution of biomass burning in PM_{2.5} concentration is likely to be less than 5% on 03.11.2021 and 04.11.2021 as winds are not favourable for transportation of pollutants.



▪ Hotspots for Today

City	Station Name	AQI value	Air Quality	Prominent Pollutant
Delhi	Wazirpur, Delhi - DPCC	363	Very Poor	PM ₁₀
	Narela, Delhi - DPCC	357	Very Poor	PM _{2.5}
	Alipur, Delhi - DPCC	349	Very Poor	PM _{2.5}
	Sonia Vihar, Delhi - DPCC	346	Very Poor	PM _{2.5}
	Jahangirpuri, Delhi - DPCC	345	Very Poor	PM _{2.5}
Faridabad	Sector 11, Faridabad - HSPCB	363	Very Poor	PM _{2.5}
	Sector- 16A, Faridabad - HSPCB	339	Very Poor	PM _{2.5}
Gurugram	Sector-51, Gurugram - HSPCB	354	Very Poor	PM _{2.5}
	Teri Gram, Gurugram - HSPCB	326	Very Poor	PM _{2.5}
Ghaziabad	Loni, Ghaziabad - UPPCB	408	Severe	PM _{2.5}
	Sanjay Nagar, Ghaziabad - UPPCB	354	Very Poor	PM _{2.5}
Greater Noida	Knowledge Park - V, Greater Noida - UPPCB	312	Very Poor	PM _{2.5}
Noida	Sector-116, Noida - UPPCB	339	Very Poor	PM _{2.5}
	Sector - 125, Noida - UPPCB	316	Very Poor	PM _{2.5}