



Central Pollution Control Board

Air Quality Status for Delhi & NCR

Dated – June 03, 2022



Current Air Quality Status:

Air Quality Index (AQI) (Average of past 24 hours)

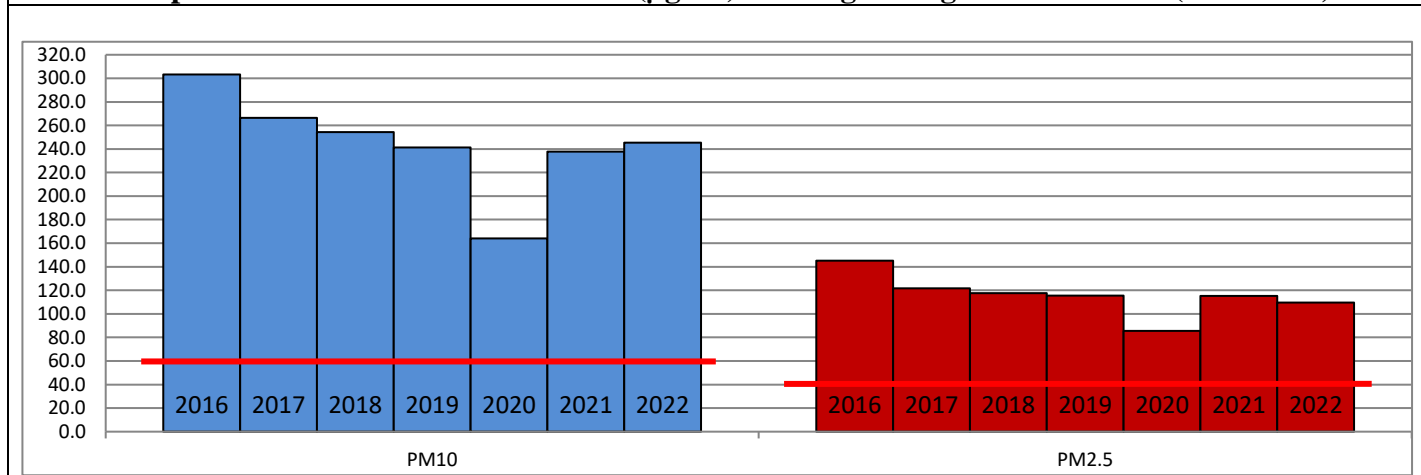
	Air Quality	AQI Value	Prominent Pollutant
Delhi	Poor	240 ↑	PM ₁₀ , PM _{2.5}
Faridabad	Poor	275 ↑	PM _{2.5} , PM ₁₀
Ghaziabad	Poor	285 ↑	PM ₁₀
Greater Noida	Poor	278 ↑	PM ₁₀
Gurugram	Poor	278 ↑	PM _{2.5} , PM ₁₀
Noida	Poor	293 ↑	PM ₁₀

*Data available for 34 stations in Delhi today. # ↓, ↑ arrows indicate a decrease/increase as compared to value on the previous day.

Comparative status of AQI - Delhi from 01 January to 03 June 2016-2022

Category	Year	2016	2017	2018	2019	2020	2021	2022	2016	2017	2018	2019	2020	2021	2022
	No. of days	151	154	154	154	155	154	154							
Good (0-50)		0	0	0	0	1	0	0							
Satisfactory (51-100)		0	0	1	2	29	6	4	15	36	47	59	101	62	37
Moderate (101-200)		15	36	46	57	71	56	33							
Poor (201-300)		77	82	77	62	37	54	97							
Very Poor (301-400)		53	36	27	26	15	32	19	136	118	107	95	54	92	117
Severe (>401)		6	0	3	7	2	6	1							

Comparative status of PM_{2.5} and PM₁₀ (µg/m³) running average – Till June 02 (2016-2022)



Hotspots for Today:

*Details given overleaf

Delhi	Anand Vihar, Dwarka Sector-8, Mundka, Alipur, Chandni Chowk	Gurugram	Sector-51, Vikas Sadan
Faridabad	New Industrial Town	Greater Noida	-
Ghaziabad	Loni, Vasundhara	Noida	Sector-125, Sector-62

Forecast by IITM (Delhi):

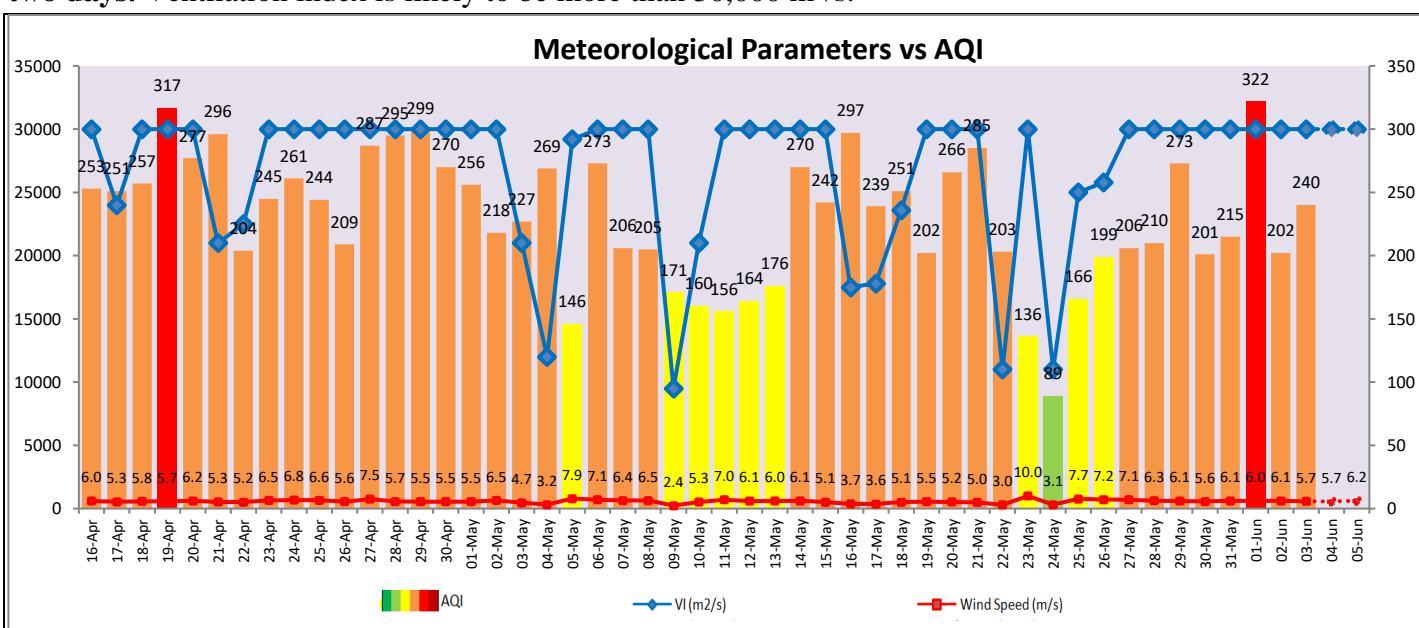
Parameters	June 04, 2022		June 05, 2022- June 06, 2022	
	Concentration	AQI Category	Concentration	AQI Category
PM ₁₀	305	Poor	361	Very Poor
PM _{2.5}	90	Moderate	106	Poor

Wind Forecast for Delhi:

	Wind speed (at surface) in km/h		Wind speed (at 900 m) in km/h	Wind Direction	
	As per IMD (at 17:30 hrs.)	As per windy.com (at 16:00 hrs.)	As per windy.com (at 16:00hrs)	As per IMD (at 17:30hrs.)	As per windy.com at 900m
June 04, 2022	25	08	19	W	W
June 05, 2022	25	14	24	W	W
June 06, 2022	25	15	23	W	W

IMD Alert for Tomorrow (04.06.2022):

The air quality is likely to deteriorate on 04.06.2022 but will remain in Upper end of Poor category. The predominant surface wind is likely to be coming from West direction in Delhi with wind speed 18-25 kmph, mainly clear sky and strong surface winds (speed 20-30 kmph) during the day tomorrow. **Long range transported dust will impact air quality over parts of Rajasthan, Gujarat, MP and NCR during next two days.** Ventilation index is likely to be more than 30,000 m²/s.



Hotspots for Today

City	Station Name	AQI value	Air Quality	Prominent Pollutant
Delhi	Anand Vihar, Delhi - DPCC	352	Very Poor	PM ₁₀
	Dwarka-Sector 8, Delhi - DPCC	327	Very Poor	PM ₁₀
	Chandni Chowk, Delhi - IITM	318	Very Poor	PM _{2.5}
	Mundka, Delhi - DPCC	309	Very Poor	PM ₁₀
	Alipur, Delhi - DPCC	303	Very Poor	PM ₁₀
Faridabad	New Industrial Town, Faridabad - HSPCB	339	Very Poor	PM ₁₀
Gurugram	Sector-51, Gurugram - HSPCB	336	Very Poor	PM ₁₀
	Vikas Sadan, Gurugram - HSPCB	303	Very Poor	PM _{2.5}
Ghaziabad	Loni, Ghaziabad - UPPCB	386	Very Poor	PM ₁₀
	Vasundhara, Ghaziabad - UPPCB	301	Very Poor	PM ₁₀
Noida	Sector - 125, Noida - UPPCB	326	Very Poor	PM ₁₀
	Sector - 62, Noida - IMD	287	Poor	PM ₁₀