



Central Pollution Control Board

Air Quality Status for Delhi & NCR

Dated – January 03, 2022



Current Air Quality Status:

Air Quality Index (AQI) (Average of past 24 hours)

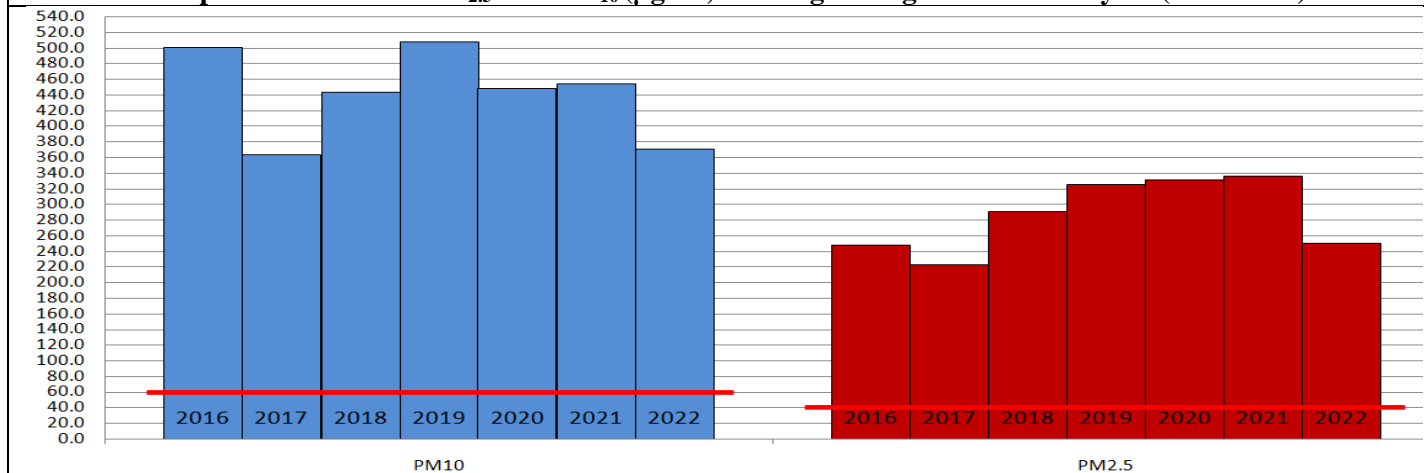
	Air Quality	AQI Value	Prominent Pollutant
Delhi	Very Poor	387↓	PM _{2.5}
Faridabad	Very Poor	340↑	PM _{2.5}
Ghaziabad	Very Poor	366↑	PM _{2.5}
Greater Noida	Poor	295↓	PM _{2.5}
Gurugram	Very Poor	355↓	PM _{2.5}
Noida	Very Poor	346↓	PM _{2.5}

*Data available for 35 stations in Delhi today. # ↓, ↑ arrows indicate increase/decrease as compared to value on the previous day

Comparative status of AQI - Delhi from 01 January to 02 January 2016-2022

Category	Year	2016	2017	2018	2019	2020	2021	2022	2016	2017	2018	2019	2020	2021	2022
	No. of days	3	3	3	3	3	3	3							
Good (0-50)		0	0	0	0	0	0	0							
Satisfactory (51-100)		0	0	0	0	0	0	0	0	0	0	0	0	0	0
Moderate (101-200)		0	0	0	0	0	0	0							
Poor (201-300)		0	0	0	0	0	0	0							
Very Poor (301-400)		3	3	2	1	1	1	2	3	3	3	3	3	3	3
Severe (>401)		0	0	1	2	2	2	1							

Comparative status of PM_{2.5} and PM₁₀ (µg/m³) running average – Till January 02 (2016-2022)



Hotspots for Today:

*Details given overleaf

Delhi	Jahangirpuri, Sonia Vihar, Anand Vihar, Punjabi Bagh, Nehru Nagar	Gurugram	Vikas Sadan, Sector-51
Faridabad	Sector-11, New Industrial Town	Greater Noida	Knowledge Park – V
Ghaziabad	Loni, Sanjay Nagar	Noida	Sector -116, Sector - 125

Forecast by IITM:

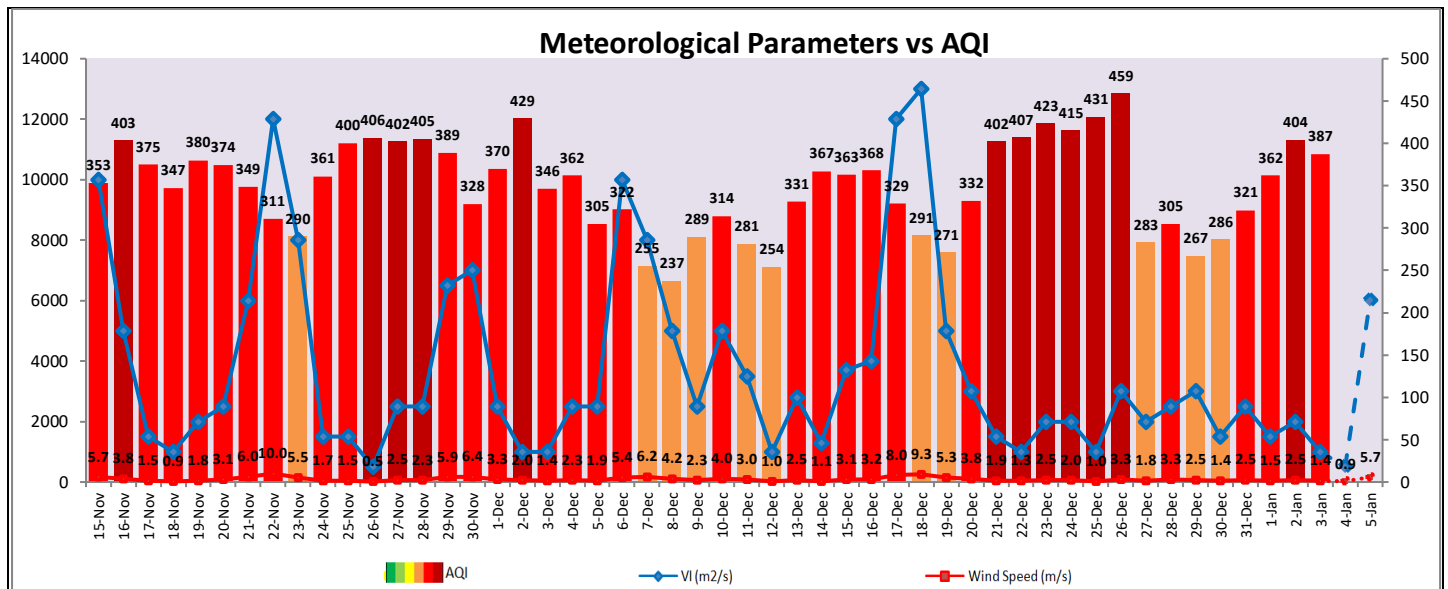
Parameters	January 04, 2022		January 05, 2022-January 06, 2022	
	Concentration	AQI Category	Concentration	AQI Category
PM ₁₀	251	Poor	283	Poor
PM _{2.5}	168	Very Poor	189	Very Poor

▪ **Wind Forecast for Delhi:**

Dates	Wind speed (at surface) in km/h		Wind speed (at 900 m) in km/h	Wind Direction	
	As per IMD (at 17:30 hrs.)	As per windy.com (at 16:00 hrs.)	As per windy.com (at 16:00hrs)	As per IMD (at 17:30hrs.)	As per windy.com at 900m
January 04, 2022	04	07	10	NE	NE
January 05, 2022	06	13	21	SE	S
January 06, 2022	04	15	39	E	SE

▪ **IMD Alert for Tomorrow (04.01.2022):**

The air quality is likely to remain in Very Poor category on 04.01.2022 and 05.01.2022 also. The predominant surface wind is likely to be coming from North/Northeast direction of Delhi with wind speed 04 kmph, partly cloudy sky and shallow fog in the morning. Ventilation index is likely to be 500 m²/s.



▪ **Hotspots for Today**

City	Station Name	AQI value	Air Quality	Prominent Pollutant
Delhi	Jahangirpuri, Delhi - DPCC	440	Severe	PM _{2.5}
	Sonia Vihar, Delhi - DPCC	438	Severe	PM _{2.5}
	Anand Vihar, Delhi - DPCC	436	Severe	PM _{2.5}
	Punjabi Bagh, Delhi - DPCC	430	Severe	PM _{2.5}
	Nehru Nagar, Delhi - DPCC	427	Severe	PM _{2.5}
Faridabad	Sector 11, Faridabad - HSPCB	387	Very Poor	PM _{2.5}
	New Industrial Town, Faridabad - HSPCB	317	Very Poor	PM _{2.5}
Gurugram	Vikas Sadan, Gurugram - HSPCB	375	Very Poor	PM _{2.5}
	Sector-51, Gurugram - HSPCB	353	Very Poor	PM _{2.5}
Ghaziabad	Loni, Ghaziabad - UPPCB	462	Severe	PM _{2.5}
	Sanjay Nagar, Ghaziabad - UPPCB	362	Very Poor	PM _{2.5}
Greater Noida	Knowledge Park - V, Greater Noida - UPPCB	296	Poor	PM _{2.5}
Noida	Sector-116, Noida - UPPCB	349	Very Poor	PM _{2.5}
	Sector - 125, Noida - UPPCB	343	Very Poor	PM _{2.5}