



Central Pollution Control Board

Air Quality Status for Delhi & NCR

Dated – June 02, 2022



Current Air Quality Status:

Air Quality Index (AQI) (Average of past 24 hours)

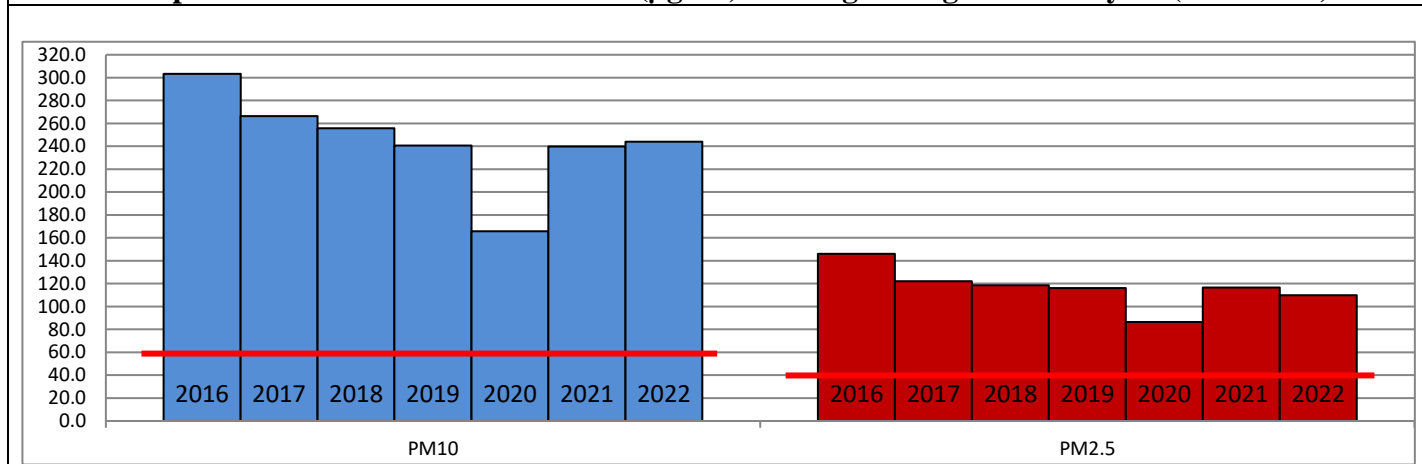
	Air Quality	AQI Value	Prominent Pollutant
Delhi	Poor	202↓	PM ₁₀ , PM _{2.5} , O ₃
Faridabad	Moderate	198↓	PM _{2.5} , PM ₁₀
Ghaziabad	Poor	233↓	PM ₁₀ , O ₃
Greater Noida	Poor	212↓	PM ₁₀
Gurugram	Poor	212↓	PM _{2.5} , PM ₁₀
Noida	Poor	217↓	PM ₁₀

*Data available for 35 stations in Delhi today. # ↓, ↑ arrows indicate a decrease/increase as compared to value on the previous day.

Comparative status of AQI - Delhi from 01 January to 02 June 2016-2022

Category	Year	2016	2017	2018	2019	2020	2021	2022	2016	2017	2018	2019	2020	2021	2022
	No. of days	150	153	153	153	154	153	153							
Good (0–50)		0	0	0	0	1	0	0							
Satisfactory (51–100)		0	0	1	2	29	6	4	15	36	46	59	100	61	37
Moderate (101–200)		15	36	45	57	70	55	33							
Poor (201–300)		77	81	77	61	37	54	96							
Very Poor (301–400)		52	36	27	26	15	32	19	135	117	107	94	54	92	116
Severe (>401)		6	0	3	7	2	6	1							

Comparative status of PM_{2.5} and PM₁₀ (µg/m³) running average – Till May 30 (2016-2022)



Hotspots for Today:

*Details given overleaf

Delhi	Anand Vihar, Chandni Chowk, Dwarka Sector-8, Mundka, NSIT Dwarka	Gurugram	Teri Gram, Sector-51
Faridabad	New Industrial Town	Greater Noida	Knowledge Park-V
Ghaziabad	Vasundhara, Loni	Noida	Sector-125, Sector-62

Forecast by IITM (Delhi):

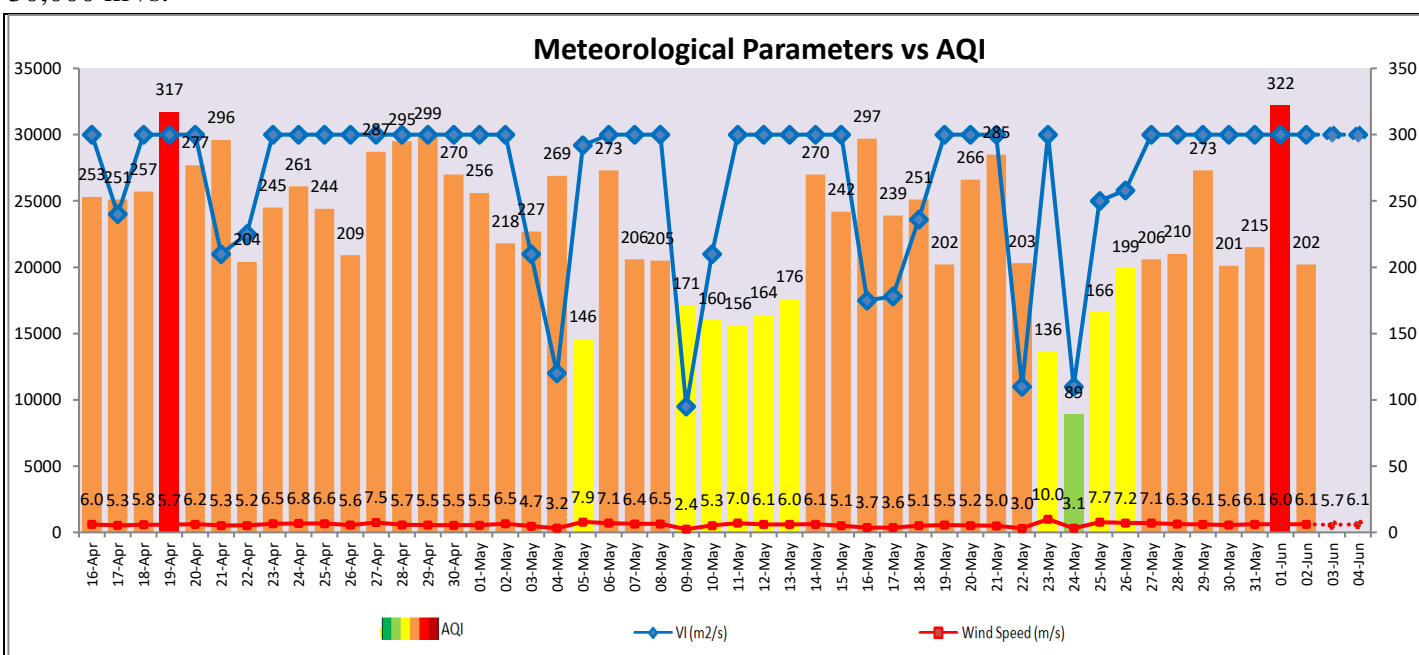
Parameters	June 03, 2022		June 04, 2022- June 05, 2022	
	Concentration	AQI Category	Concentration	AQI Category
PM ₁₀	265	Poor	310	Poor
PM _{2.5}	81	Moderate	95	Poor

Wind Forecast for Delhi:

	Wind speed (at surface) in km/h		Wind speed (at 900 m) in km/h	Wind Direction	
	As per IMD (at 17:30 hrs.)	As per windy.com (at 16:00 hrs.)	As per windy.com (at 16:00hrs)	As per IMD (at 17:30hrs.)	As per windy.com at 900m
June 03, 2022	12	07	19	WNW	NW
June 04, 2022	12	12	25	WNW	W
June 05, 2022	18	15	25	W	W

IMD Alert for Tomorrow (03.06.2022):

The air quality is likely to remain in Moderate to Poor category from 03.06.2022 to 04.06.2022. The predominant surface wind is likely to be coming from West/Northwest direction in Delhi with wind speed 10-18 kmph, and mainly clear sky tomorrow. **Long range transported dust will impact air quality over parts of Rajasthan, Gujarat, MP and NCR during next two days.** Ventilation index is likely to be more than 30,000 m²/s.



Hotspots for Today

City	Station Name	AQI value	Air Quality	Prominent Pollutant
Delhi	Anand Vihar, Delhi - DPCC	322	Very Poor	PM ₁₀
	Chandni Chowk, Delhi - IITM	320	Very Poor	PM _{2.5}
	Mundka, Delhi - DPCC	259	Poor	PM ₁₀
	NSIT Dwarka, Delhi - CPCB	243	Poor	PM ₁₀
	Dwarka-Sector 8, Delhi - DPCC	242	Poor	PM ₁₀
Faridabad	New Industrial Town, Faridabad - HSPCB	264	Poor	PM ₁₀
Gurugram	Teri Gram, Gurugram - HSPCB	243	Poor	PM _{2.5}
	Sector-51, Gurugram - HSPCB	209	Poor	PM ₁₀
Ghaziabad	Loni, Ghaziabad - UPPCB	289	Poor	PM ₁₀
	Vasundhara, Ghaziabad - UPPCB	234	Poor	PM ₁₀
Greater Noida	Knowledge Park - V, Greater Noida - UPPCB	211	Poor	PM ₁₀
Noida	Sector - 62, Noida - IMD	234	Poor	PM ₁₀
	Sector - 125, Noida - UPPCB	217	Poor	PM ₁₀