



Central Pollution Control Board

Air Quality Status for Delhi & NCR

Dated – January 02, 2022



Current Air Quality Status:

Air Quality Index (AQI) (Average of past 24 hours)

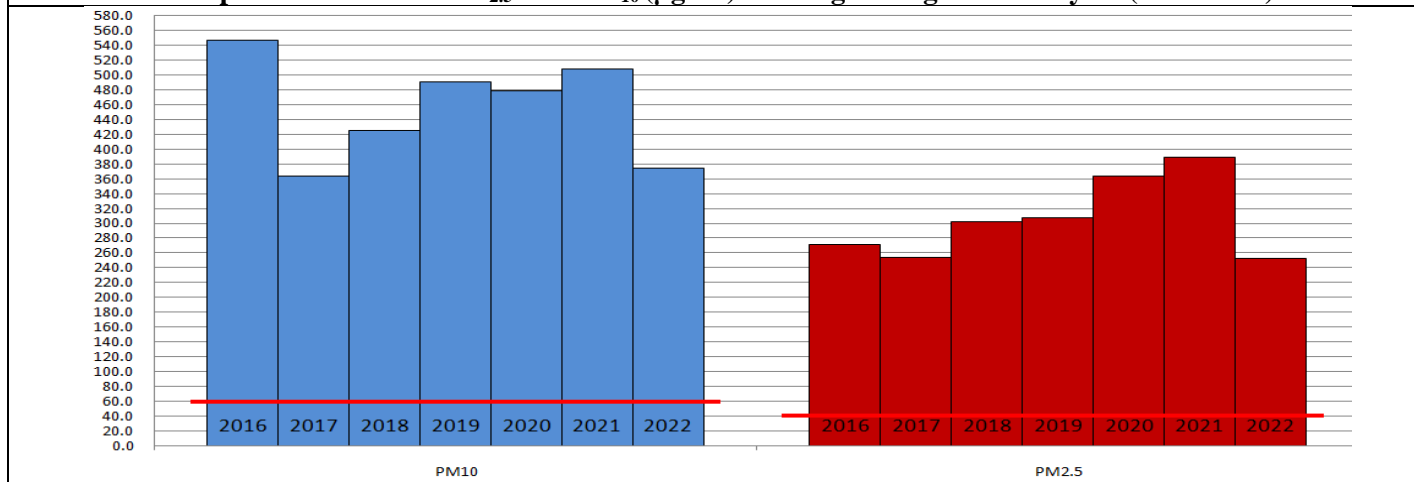
	Air Quality	AQI Value	Prominent Pollutant
Delhi	Severe	404↑	PM _{2.5}
Faridabad	Very Poor	334↑	PM _{2.5} , PM ₁₀
Ghaziabad	Very Poor	363↑	PM _{2.5}
Greater Noida	Very Poor	331↑	PM _{2.5}
Gurugram	Very Poor	385↑	PM _{2.5}
Noida	Very Poor	380↑	PM _{2.5}

*Data available for 35 stations in Delhi today. # ↑, ↓ arrows indicate increase/decrease as compared to value on the previous day

Comparative status of AQI - Delhi from 01 January to 02 January 2016-2022

Category	Year	2016	2017	2018	2019	2020	2021	2022	2016	2017	2018	2019	2020	2021	2022
		No. of days													
Good (0–50)		0	0	0	0	0	0	0							
Satisfactory (51–100)		0	0	0	0	0	0	0	0	0	0	0	0	0	0
Moderate (101–200)		0	0	0	0	0	0	0							
Poor (201–300)		0	0	0	0	0	0	0							
Very Poor (301–400)		2	2	1	1	0	0	1	2	2	2	2	2	2	2
Severe (>401)		0	0	1	1	2	2	1							

Comparative status of PM_{2.5} and PM₁₀ (µg/m³) running average – January 01 (2016-2022)



Hotspots for Today:

*Details given overleaf

Delhi	Anand Vihar, Jahangirpuri, Nehru Nagar, Punjabi Bagh, Patparganj	Gurugram	Vikas Sadan, Sector-51
Faridabad	Sector-11, Sector-16A	Greater Noida	Knowledge Park – V
Ghaziabad	Indirapuram, Sanjay Nagar	Noida	Sector -116, Sector - 125

Forecast by IITM:

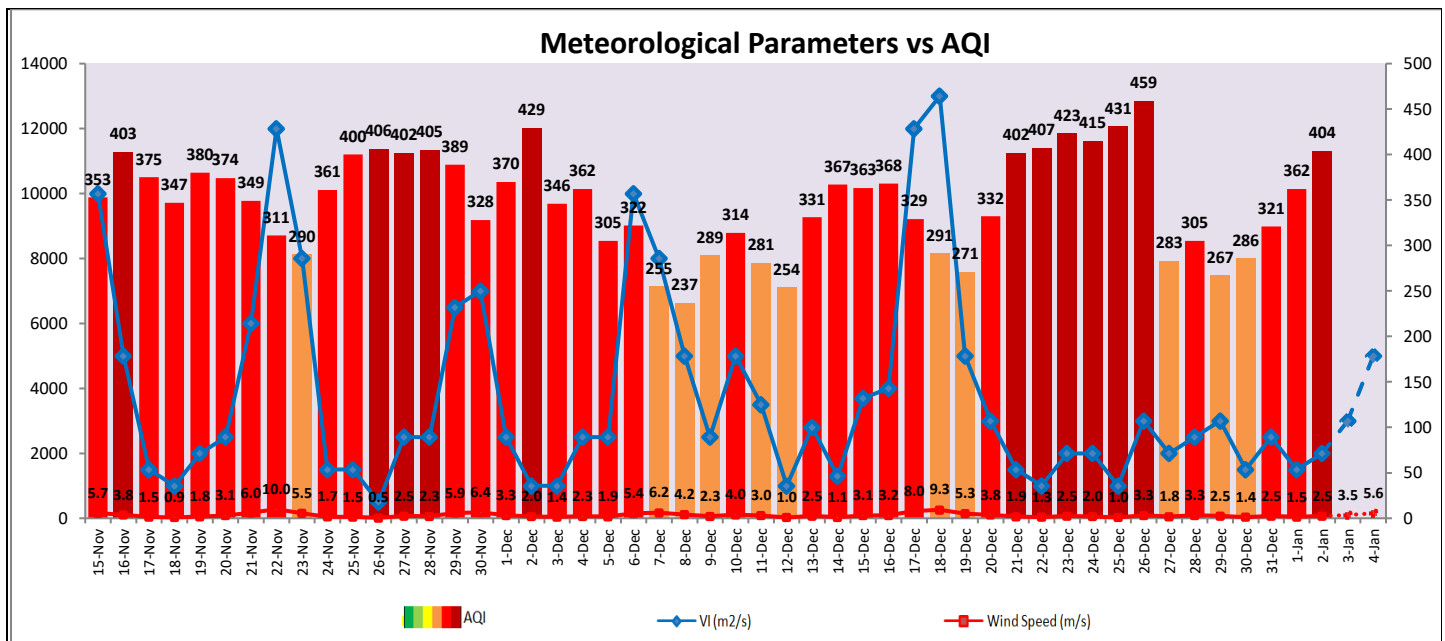
Parameters	January 03, 2022		January 04, 2022-January 05, 2022	
	Concentration	AQI Category	Concentration	AQI Category
PM ₁₀	371	Very Poor	354	Very Poor
PM _{2.5}	248	Very Poor	237	Very Poor

■ **Wind Forecast for Delhi:**

Dates	Wind speed (at surface) in km/h		Wind speed (at 900 m) in km/h	Wind Direction	
	As per IMD (at 17:30 hrs.)	As per windy.com (at 16:00 hrs.)	As per windy.com (at 16:00hrs)	As per IMD (at 17:30hrs.)	As per windy.com at 900m
January 03, 2022	05	08	22	WNW	NW
January 04, 2022	08	07	07	NE	N
January 05, 2022	08	11	11	ESE	W

■ **IMD Alert for Tomorrow (03.01.2022):**

The air quality is likely to remain in Very Poor category on 03.01.2022 and 04.01.2022. The predominant surface wind is likely to be coming from West North West direction of Delhi having wind speed 05 kmph to 12 kmph, partly cloudy sky and shallow to moderate fog in the morning. Ventilation index is likely to be 3,000 m²/s.



■ **Hotspots for Today**

City	Station Name	AQI value	Air Quality	Prominent Pollutant
Delhi	Anand Vihar, Delhi - DPCC	459	Severe	PM _{2.5}
	Jahangirpuri, Delhi - DPCC	456	Severe	PM _{2.5}
	Nehru Nagar, Delhi - DPCC	444	Severe	PM _{2.5}
	Punjabi Bagh, Delhi - DPCC	444	Severe	PM _{2.5}
	Patparganj, Delhi - DPCC	440	Severe	PM _{2.5}
Faridabad	Sector 11, Faridabad - HSPCB	420	Severe	PM _{2.5}
	Sector- 16A, Faridabad - HSPCB	407	Severe	PM _{2.5}
Gurugram	Sector-51, Gurugram - HSPCB	427	Severe	PM _{2.5}
	Vikas Sadan, Gurugram - HSPCB	385	Very Poor	PM _{2.5}
Ghaziabad	Sanjay Nagar, Ghaziabad - UPPCB	383	Very Poor	PM _{2.5}
	Indirapuram, Ghaziabad - UPPCB	356	Very Poor	PM _{2.5}
Greater Noida	Knowledge Park - V, Greater Noida - UPPCB	348	Very Poor	PM _{2.5}
Noida	Sector-116, Noida - UPPCB	397	Very Poor	PM _{2.5}
	Sector - 125, Noida - UPPCB	373	Very Poor	PM _{2.5}