



Central Pollution Control Board

Air Quality Status for Delhi & NCR

Dated – November 01, 2022



Current Air Quality Status:

Air Quality Index (AQI) (Average of past 24 hours)

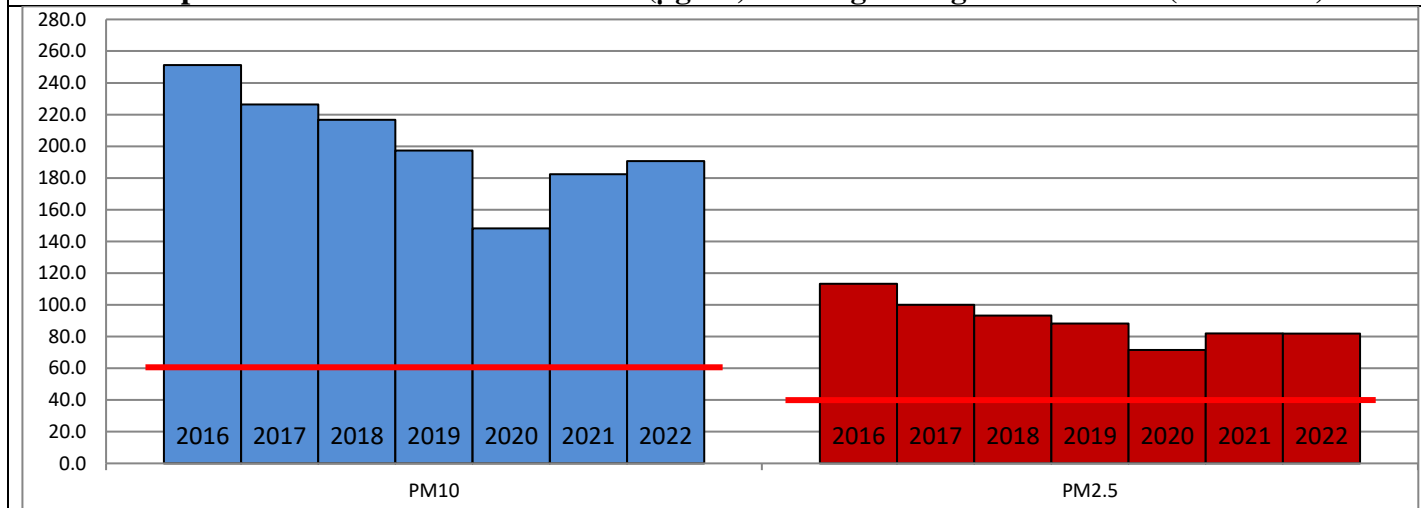
	Air Quality	AQI Value	Prominent Pollutant
Delhi	Severe	424 ↓	PM _{2.5}
Faridabad	Severe	403 ↑	PM ₁₀ , PM _{2.5}
Ghaziabad	Very Poor	381 ↑	PM _{2.5}
Greater Noida	Severe	402 ↑	PM ₁₀ , PM _{2.5}
Gurugram	Very Poor	390 ↑	PM _{2.5}
Noida	Very Poor	398 ↑	PM ₁₀ , PM _{2.5}

*Data available for 35 stations in Delhi today. # ↓ ↑ arrows indicate a decrease/increase as compared to the value on the previous day.

Comparative status of AQI - Delhi from 01 January to 01 November 2016-2022

Category	Year	2016	2017	2018	2019	2020	2021	2022	2016	2017	2018	2019	2020	2021	2022
	No. of days	294	305	305	305	306	305	305							
Good (0–50)		0	2	0	2	5	1	3							
Satisfactory (51–100)		24	45	53	58	95	81	65	110	150	157	175	224	197	160
Moderate (101–200)		86	103	104	115	124	115	92							
Poor (201–300)		116	102	103	88	55	69	115							
Very Poor (301–400)		59	52	38	32	25	33	28	184	155	148	130	82	108	145
Severe (>401)		9	1	7	10	2	6	2							

Comparative status of PM₁₀ and PM_{2.5} (µg/m³) running average – Till Oct 31 (2016-2022)



Hotspots for Today:

*Details given overleaf

Delhi	Sonia Vihar, Jahangirpuri, Ashok Vihar, Wazirpur, Vivek Vihar	Ghaziabad	Loni, Indrapuram
Faridabad	New Industrial Town, Sector 16 A	Greater Noida	Knowledge Park-III
Gurugram	Teri Gram, Sector-51	Noida	Sector-116, Sector - 62

Forecast by IITM (Delhi):

	Nov 02, 2022		Nov 03, 2022- Nov 04, 2022	
	Concentration	AQI Category	Concentration	AQI Category
PM ₁₀	461	Severe	473	Severe
PM _{2.5}	262	Severe	274	Severe

Wind Forecast for Delhi:

	Wind speed (at surface) in km/h		Wind speed (at 900 m) in km/h	Wind Direction	
	As per IMD (range)	As per windy.com (at 16:00 hrs.)	As per windy.com (at 16:00hrs)	As per IMD	As per windy.com at 900m
Nov 02, 2022	04-08	09	22	Variable	NW
Nov 03, 2022	08	09	28	Variable	NW
Nov 04, 2022	08-12	07	11	SE	W

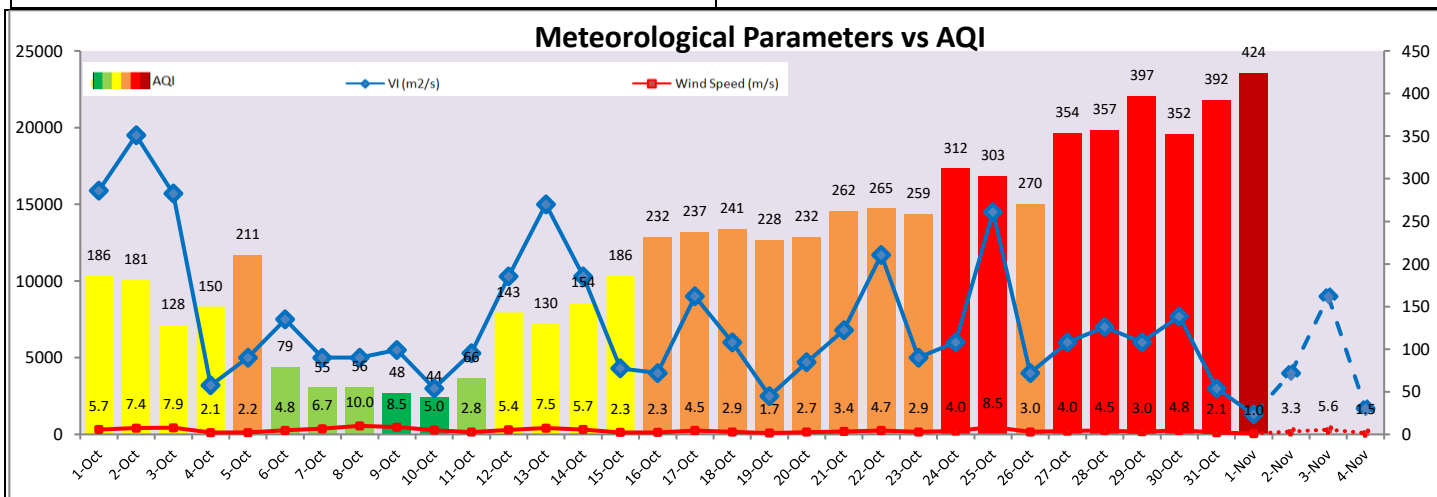
IMD Alert for Tomorrow (02.11.2022):

The overall air quality over Delhi is likely to remain in Severe category on 02.11.2022. The predominant surface wind is likely to be coming from variable directions in Delhi during with wind speed 04-08 kmph, mainly clear sky and mist in the morning tomorrow. Ventilation index is likely to be 4,000 m²/s.

Active Fire Events (AFE):

Date	Punjab		Haryana	
	Nos. on the day	Total since September 15	Nos. on the day	Total since September 15
01.11.2022	1842	17846	88	2083
01.11.2021	1796	15065	124	3038

* As per IITM, the impact of stubble burning is ~14%.



Hotspots for Today

City	Station Name	AQI value	Air Quality	Prominent Pollutant
Delhi	Sonia Vihar, Delhi - DPCC	479	Severe	PM _{2.5}
	Jahangirpuri, Delhi - DPCC	473	Severe	PM _{2.5}
	Ashok Vihar, Delhi - DPCC	466	Severe	PM _{2.5}
	Wazirpur, Delhi - DPCC	465	Severe	PM _{2.5}
	Vivek Vihar, Delhi - DPCC	464	Severe	PM _{2.5}
Faridabad	New Industrial Town, Faridabad - HSPCB	448	Severe	PM ₁₀
	Sector- 16A, Faridabad - HSPCB	440	Severe	PM _{2.5}
Gurugram	Teri Gram, Gurugram - HSPCB	434	Severe	PM _{2.5}
	Sector-51, Gurugram - HSPCB	408	Severe	PM _{2.5}
Ghaziabad	Loni, Ghaziabad - UPPCB	411	Severe	PM _{2.5}
	Indirapuram, Ghaziabad - UPPCB	378	Very Poor	PM _{2.5}
Greater Noida	Knowledge Park - III, Greater Noida - UPPCB	419	Severe	PM _{2.5}
Noida	Sector - 62, Noida - IMD	442	Severe	PM _{2.5}
	Sector-116, Noida - UPPCB	414	Severe	PM _{2.5}