



Central Pollution Control Board

Air Quality Status for Delhi & NCR

Dated – January 01, 2022



Current Air Quality Status:

Air Quality Index (AQI) (Average of past 24 hours)

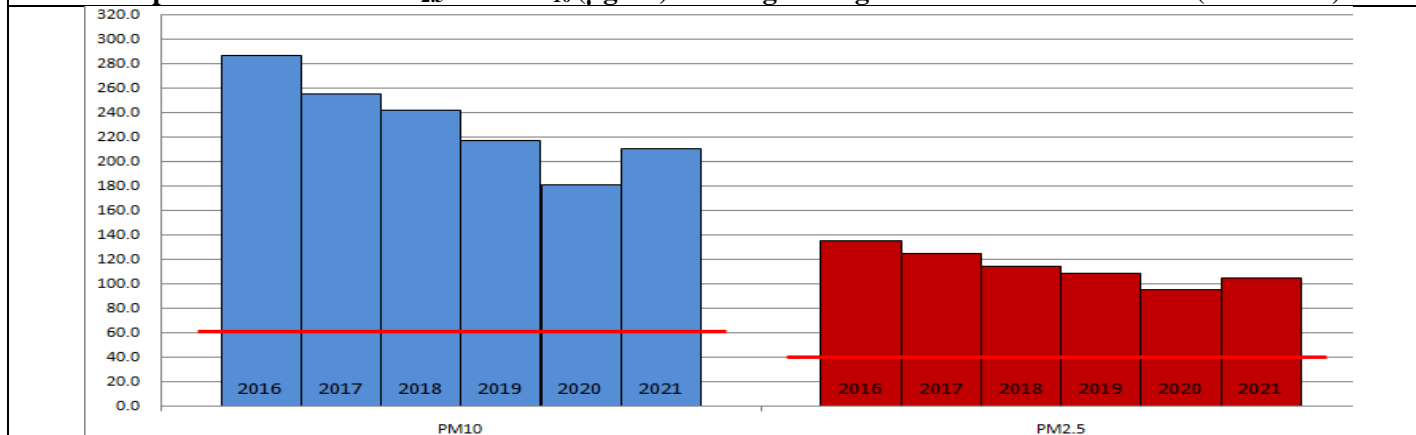
	Air Quality	AQI Value	Prominent Pollutant
Delhi	Very Poor	362↑	PM ₁₀ , PM _{2.5}
Faridabad	Very Poor	309↑	PM _{2.5} , PM ₁₀
Ghaziabad	Very Poor	352↑	PM _{2.5}
Greater Noida	Poor	281↑	PM _{2.5}
Gurugram	Very Poor	340↑	PM _{2.5}
Noida	Very Poor	321↑	PM _{2.5}

*Data available for 35 stations in Delhi today. # ↑ ↓ arrows indicate increase/decrease as compared to value on the previous day

Comparative status of AQI - Delhi from 01 January to 01 January 2016-2022

Category	Yearp	2016	2017	2018	2019	2020	2021	2022	2016	2017	2018	2019	2020	2021	2022
		No. of days													
Good (0-50)		0	0	0	0	0	0	0							
Satisfactory (51-100)		0	0	0	0	0	0	0	0	0	0	0	0	0	0
Moderate (101-200)		0	0	0	0	0	0	0							
Poor (201-300)		0	0	0	0	0	0	0							
Very Poor (301-400)		1	1	1	1	0	0	1	1	1	1	1	1	1	1
Severe (>401)		0	0	0	0	1	1	0							

Comparative status of PM_{2.5} and PM₁₀ (µg/m³) running average - Delhi till December 31 (2016-2021)



Hotspots for Today:

*Details given overleaf

Delhi	Anand Vihar, Jahangirpuri, Nehru Nagar, Punjabi Bagh, Ashok Nagar	Gurugram	Vikas Sadan, Sector-51
Faridabad	Sector-11, Sector-16A	Greater Noida	Knowledge Park – V
Ghaziabad	Loni, Sanjay Nagar	Noida	Sector -116, Sector - 125

Forecast by IITM:

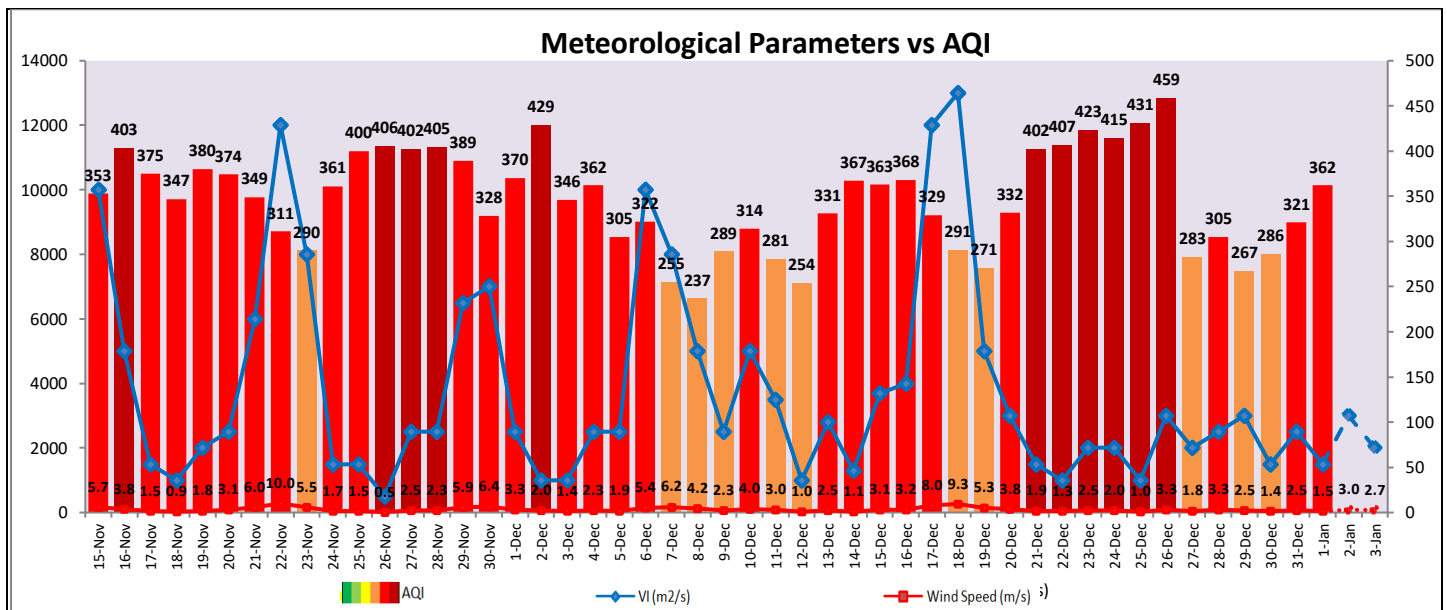
Parameters	January 02, 2022		January 03, 2022-January 04, 2022	
	Concentration	AQI Category	Concentration	AQI Category
PM ₁₀	315	Poor	372	Very Poor
PM _{2.5}	193	Very Poor	208	Very Poor

Wind Forecast for Delhi:

Dates	Wind speed (at surface) in km/h		Wind speed (at 900 m) in km/h	Wind Direction	
	As per IMD (at 17:30 hrs.)	As per windy.com (at 16:00 hrs.)	As per windy.com (at 16:00hrs)	As per IMD (at 17:30hrs.)	As per windy.com at 900m
January 02, 2022	04	09	15	NW	N
January 03, 2022	-	09	21	CALM	NW
January 04, 2022	-	06	09	CALM	N

IMD Alert for Tomorrow (02.01.2022):

The air quality is likely to remain in lower end of Very Poor category on 02.01.2022 and 03.01.2022. The predominant surface wind is likely to be coming from Northwest direction of Delhi having wind speed upto 04 kmph with mainly clear sky and shallow to moderate fog in the morning. Ventilation index is likely to be 3,000 m²/s.



Hotspots for Today

City	Station Name	AQI value	Air Quality	Prominent Pollutant
Delhi	Anand Vihar, Delhi - DPCC	458	Severe	PM ₁₀
	Jahangirpuri, Delhi - DPCC	428	Severe	PM _{2.5}
	Nehru Nagar, Delhi - DPCC	414	Severe	PM _{2.5}
	Punjabi Bagh, Delhi - DPCC	404	Severe	PM _{2.5}
	Ashok Vihar, Delhi - DPCC	396	Very Poor	PM _{2.5}
Faridabad	Sector 11, Faridabad - HSPCB	377	Very Poor	PM _{2.5}
	Sector- 16A, Faridabad - HSPCB	360	Very Poor	PM _{2.5}
Gurugram	Sector-51, Gurugram - HSPCB	377	Very Poor	PM _{2.5}
	Vikas Sadan, Gurugram - HSPCB	370	Very Poor	PM _{2.5}
Ghaziabad	Loni, Ghaziabad - UPPCB	445	Severe	PM _{2.5}
	Sanjay Nagar, Ghaziabad - UPPCB	352	Very Poor	PM _{2.5}
Greater Noida	Knowledge Park - V, Greater Noida - UPPCB	281	Poor	PM _{2.5}
Noida	Sector-116, Noida - UPPCB	326	Very Poor	PM _{2.5}
	Sector - 125, Noida - UPPCB	325	Very Poor	PM _{2.5}