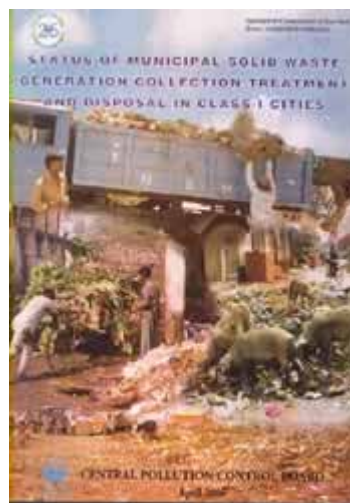


Status of Municipal Solid Waste Generation, Collection, Treatment & Disposal in Class - I Cities.

Foreword

For planning of municipal solid waste management programme in the country, it is essential to know the status of waste generation, collection and disposal. With this in view, the Central Pollution Control Board (CPCB) commissioned a study which was conducted by the Environment Protection, Training and Research Institute (EPTRI), Hyderabad. The study has resulted in a series of status reports on solid waste management in Metrocities, Class I cities and Class II towns. This is the second report in the series. The report highlights the major problems in solid waste management and possible remedial measures.

We hope, this document will be useful to the planners, decision makers and others concerned with solid waste management.



A handwritten signature in black ink, appearing to read 'Dilip Biswas', is written over a horizontal line.

Dilip Biswas
Chairman,
CPCB