

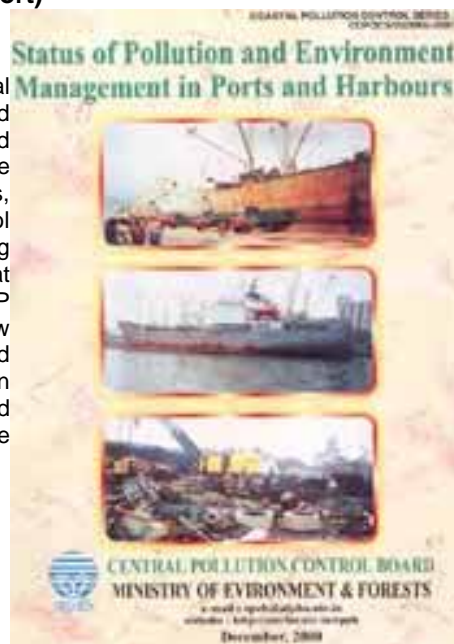
List of Publications



Status of Pollution and Environment Management in Ports and Harbours (Calcutta & Paradeep Port)

Foreword

while promoting the economic pursuits also result in environmental impacts. Navigation, dry docking, ship breaking, loading and unloading operations are among the various port and harbour related activities, which can cause environmental impacts. To assess the nature and extent of environmental pollution from ports and harbours, a team from the Eastern Zonal Office of Central Pollution Control Board carried out a study in Calcutta and Paradeep ports during 1995-1999. This report is the outcome of the study. It indicates that the dissolved oxygen content of the waters at Kidderpore dock (KP dock) in the Calcutta port ranged from 1.80 to 7.30 mg/l. The low values of dissolved oxygen may be due to high algal growth and sediment oxygen demand. It was observed that oil and grease in water was as much as 74.5 mg/l during 1996, while the prescribed standard is 10 mg/l for harbour water. The lead content in the sediment ranged between 87 and 305 ug/g,



while the Haldia dock waters showed lower values ranging between 28 and 68 ug/g. On the other hand, the waters of Paradeep port contained dissolved oxygen above 5 mg/l, At the same time, high content of phosphate was also observed, probably due to mixing of phosphate during rock phosphate handling. The oil and grease content in the waters of Paradeep port although less than that of the waters of Calcutta port (maximum 16.9 mg/l) is higher than the prescribed standard. The findings of the study are indicative of the environmental quality in our ports and harbours, which need attention of the concerned authorities.

I hope, the information contained in this report will be useful to those who are engaged in the management and development of ports and harbours ..

Dilip Biswas
Chairman, CPCB