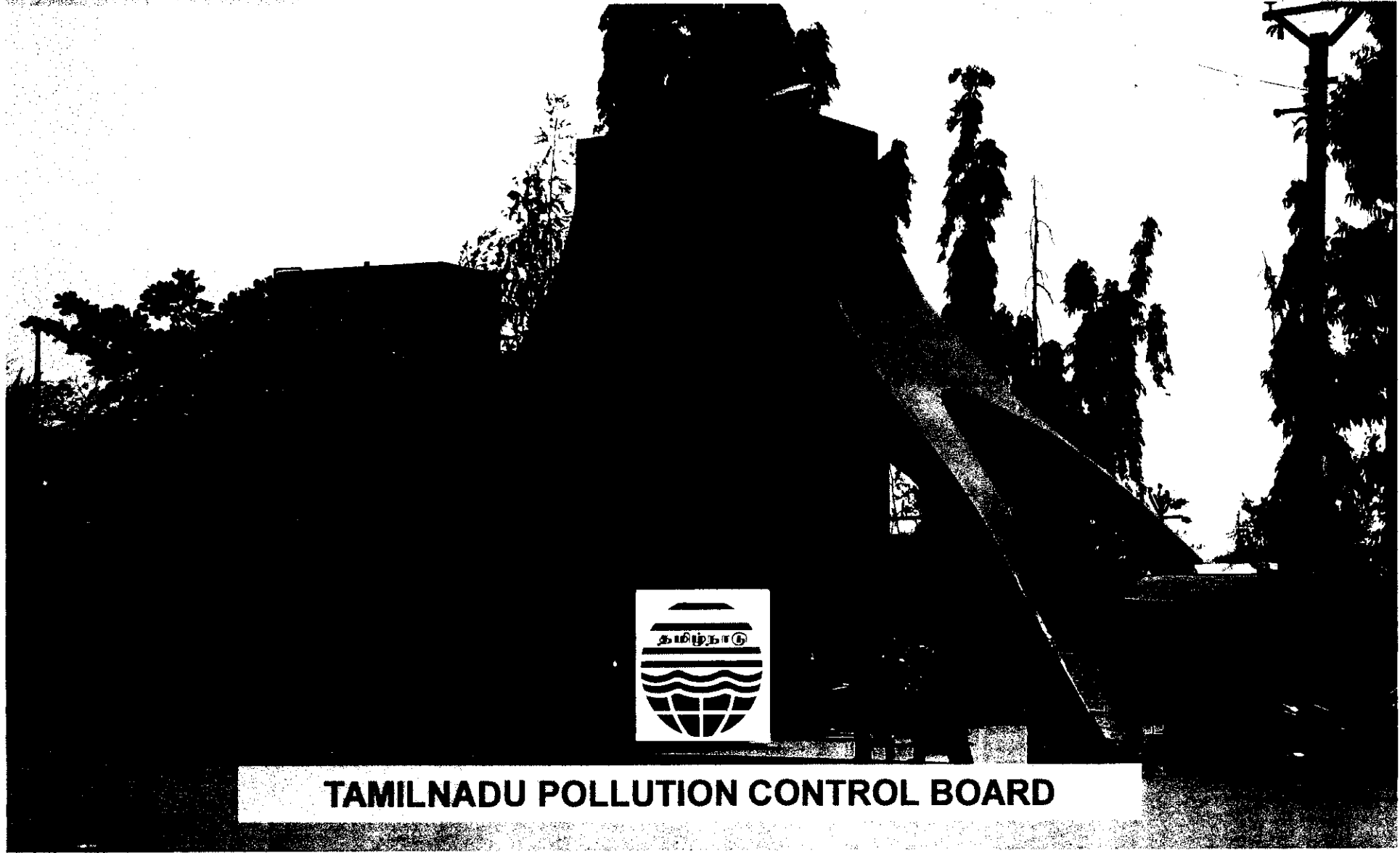


ACTION TAKEN REPORT FOR CRITICALLY POLLUTED AREA KURICHI INDUSTRIAL CLUSTER (COIMBATORE)



TAMILNADU POLLUTION CONTROL BOARD

Comprehensive Environmental Pollution Index of CPCB Report

The CEPI Score for Industrial Area/clusters pertaining to Coimbatore

No	Industrial Area/clusters	Air	Water	Land	CEPI	
[Redacted Data]						

Ac-Air Critical; Ws-Water Severe; Ln-Land Normal

WACHINDHI INDUSTRIAL CLUSTER

Location:

- **7 Km from Coimbatore city in SE direction**
- **Two Industrial Estates (SIDCO & Private)**
- **Total extent of the estate - 180 Acres (88.5+81.5)**
- **10°55'11"N Latitude and 76°57'35"E Longitude**
- **Population 76794 (2001 Censes)**
- **Total no. of industries - 269 (Red -45, Orange – 32, Green – 192)**
- **17 Category industries - Nil**

INDUSTRIES COVERED UNDER CEPI AREA

S. No.	Name of the Industry	Size	Category
1	M/s. Auto Shell Casts Pvt. Ltd.,	Red/Large	Foundry
2	M/s. Auto Shell Perfect Moulder Ltd.,	Red/Large	Foundry
3	M/s. Indo Shell Cast Pvt. Ltd.,	Red/Medium	Foundry
4	M/s. Everest Industries Ltd., Podanur	Red/Large	Asbestos Roofing Sheet Mfg. unit
5	M/s. Craftsman Automation Pvt. Ltd., Unit-II	Red/Medium	Foundry
6	M/s. Unique Shell Mould () Pvt. Ltd., Unit-I	Red/Medium	Foundry
7	M/s. Unique Shell Mould () Pvt. Ltd., Unit-II	Red/Medium	Foundry
8	M/s. Indo Shell Mould Ltd., Unit-I	Red/Medium	Foundry
9	M/s. Indo Shell Mould Ltd., Unit-II	Red/Medium	Foundry
10	M/s. V.X.L. Ring Travellers Pvt. Ltd.,	Red/Medium	Engineering with Heat Treatment

Contd..

Sl. No	Name of the Industry	Size	Category
11	M/s. Sri Seethalakshmi Steel Castings Pvt.Limited	Red/Medium	Foundry
12	M/s. Jayashree Metal Casters (P) Limited	Red/Medium	Foundry
13	M/s. Janatics India Pvt. Limited	Orange/Large	Engineering with Surface Treatment
14	M/s. Titan Paints & Chemicals Ltd.,	Red/Large	Paint (Powder Coating Paint Mfg.unit)
15	M/s. KMR Metal Mart	Red/Small	Lead Smelting & Refining Unit
16	M/s. Vignesh Metal and Alloys	Red/Medium	Foundry
17	M/s. Ferrous Alloys	Red/Medium	Foundry
18	M/s. Treads Direct Limited	Orange/Large	Tread Rubber

KURICHI INDUSTRIAL CLUSTER

RED CATEGORY – 45 units (R54)

SI.No	CLASSIFICATION	LARGE	MEDIUM	SMALL	TOTAL
1	LEATHER	2	8	12	22
2	LEATHER TANNERY	0	0	2	2
3	LEATHER	2	0	0	2
4	LEATHER	0	0	1	2
5	WATER TREATMENT WITH SULFATE	0	2	67	10
6	WATER TREATMENT	0	0	3	3
7	WATER TREATMENT	0	0	2	2
	TOTAL	6	10	29	45

17 Category of Industries - NIL

LIFTING OF BAN

- Action Plan was submitted to the CPCB
- Revised Action Plan including all observations noticed by CPCB was submitted to MOEF through CPCB.
- Revised CEPI Score Calculated as 58.2
- GOI, MOEF, New Delhi vide its memorandum dated: 26.190.2010 lifted the ban for Kurichi Industrial Cluster, Coimbatore.

ACTION TAKEN BY THE INDUSTRIES IN CEPI AREA, COIMBATORE AS
ON 22.08.2011

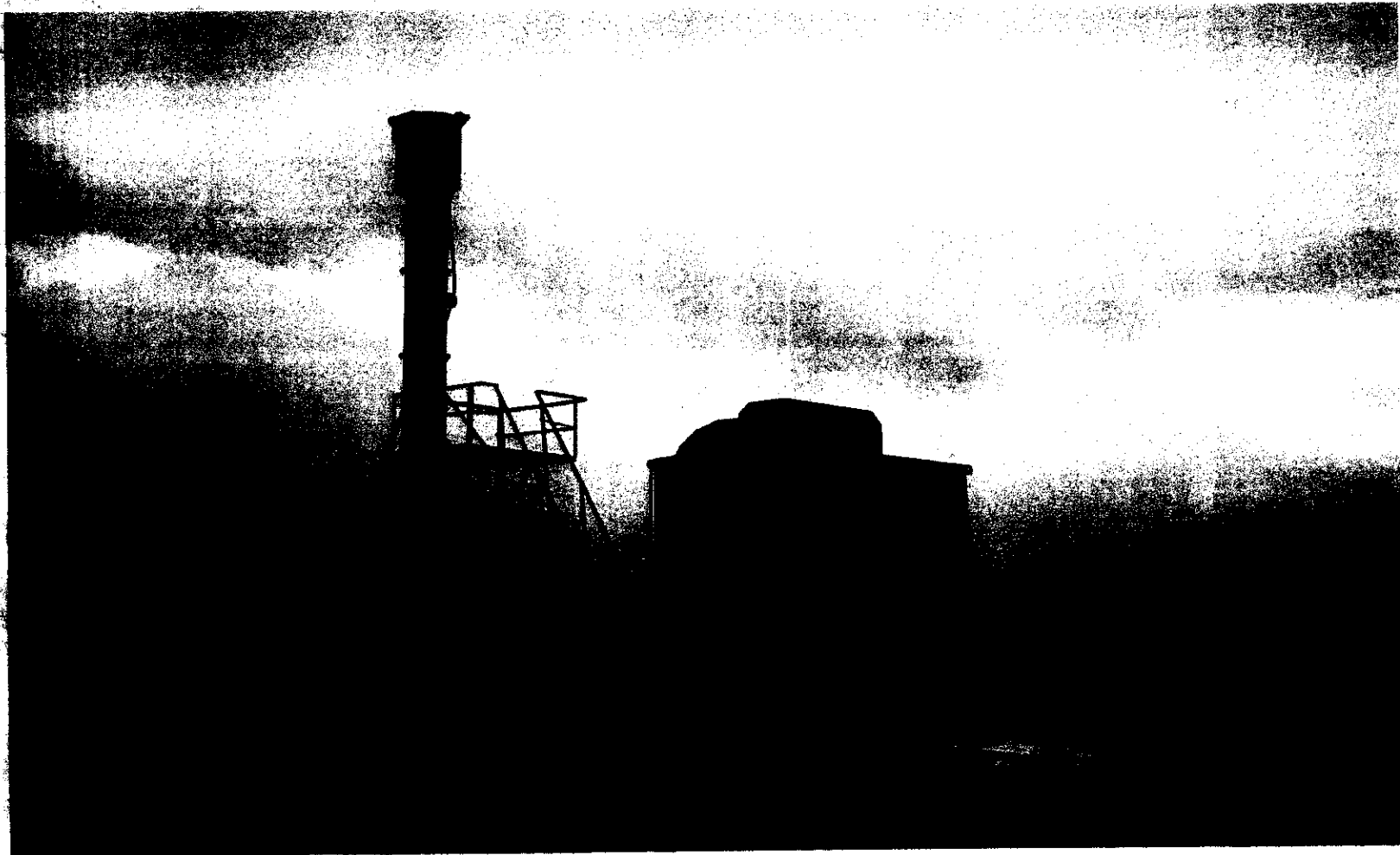
Sl. No	Action Points(Source – mitigation measures)		Responsible Stake Holders	Time Limit	Cost Rs.in Lakhs	Remarks
01	a	Induction Furnace – Bag Filter	M/s. Auto Shell Casts Private Limited	15.08.2010	6.50	Bag Filter provided and it is in operation
	b	Shot Blasting – Wet Settling Chamber		30.07.2010	3.75	Wet Settling Chamber provided and it is in operation.
	c	Waste Sand – Sand Reclamation Plant		31.08.2010	7.35	Sand Reclamation plant for CO ₂ is provided in their sister concern at Pollachi Taluk
02.	a	Induction Furnace – Bag Filter	M/s. Autoshell Perfect Moulders Limited	15.08.2010	5.65	Bag Filter provided and it is in operation.
	b	Cupola Furnace-Wet Scrubber		30.07.2010	6.50	Wet Scrubber (NPC Design) 2 nos. provided and it is in operation.
	c	Shot Blasting-Wet Settling Chamber		30.07.2010	3.65	Wet Settling chamber is provided. It is in operation.
	d	Waste Sand-Sand Reclamation Plant		31.08.2010	4.5 Crore	Under Technical discussion it will be finalized and implemented within one year.

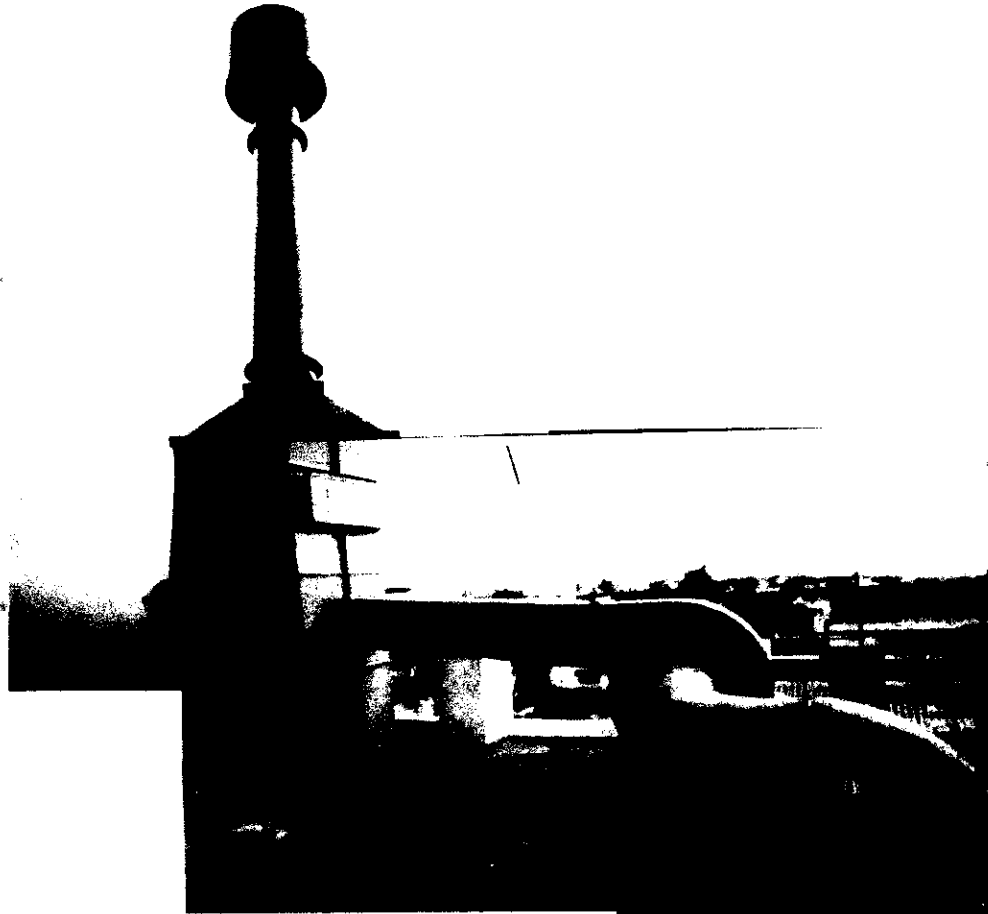
3	a. DG Set – Accoustic Measures	M/s. Indoshell Cast Private Limited	30.07.2010	12.0	Accoustic measures provided to one DG set and another DG set was replaced with a new DG set.		
4	a	Fugitive Emission-Tar Road (all internal)	M/s. Everest Industries Limited, Podanur	30.09.2010	130	Laying of patch work inside the factory premises was completed. Providing tar road inside the premises will be completed within six months to avoid fugitive emissions.	
	b			Sieve Washing – Recycle	30.06.2010	1.0	Sieve Washing Water is recycled in the process.
	c			STP- Providing EMP	30.07.2010	1.0	EMFM provided.
	d			Monitoring – Lab to facilitate counting of Asbestos fibre	30.09.2010	3.0	Microscope was installed for fibre testing.
5	Waste Sand – Sand Reclamation Plant	M/s. Craftsman Automation Pvt.Limited	30.10.2010	28.0	sand reclamation plant is provided and commissioned during April 2011. It is under operation.		
6	DG Set-Accoustic Measures	M/s. Unique Sheel Mould (India) Pvt.Limited, Plant –I	30.07.2010	2.0	Completed during June 2010		
7	DG Set – 2 Nos – Acoustic Measures	M/s. Unique Sheel Mould (India) Pvt.Limited, Plant –II	31.08.2010	20	New DG set was provided in the place of old one with same capacity.		

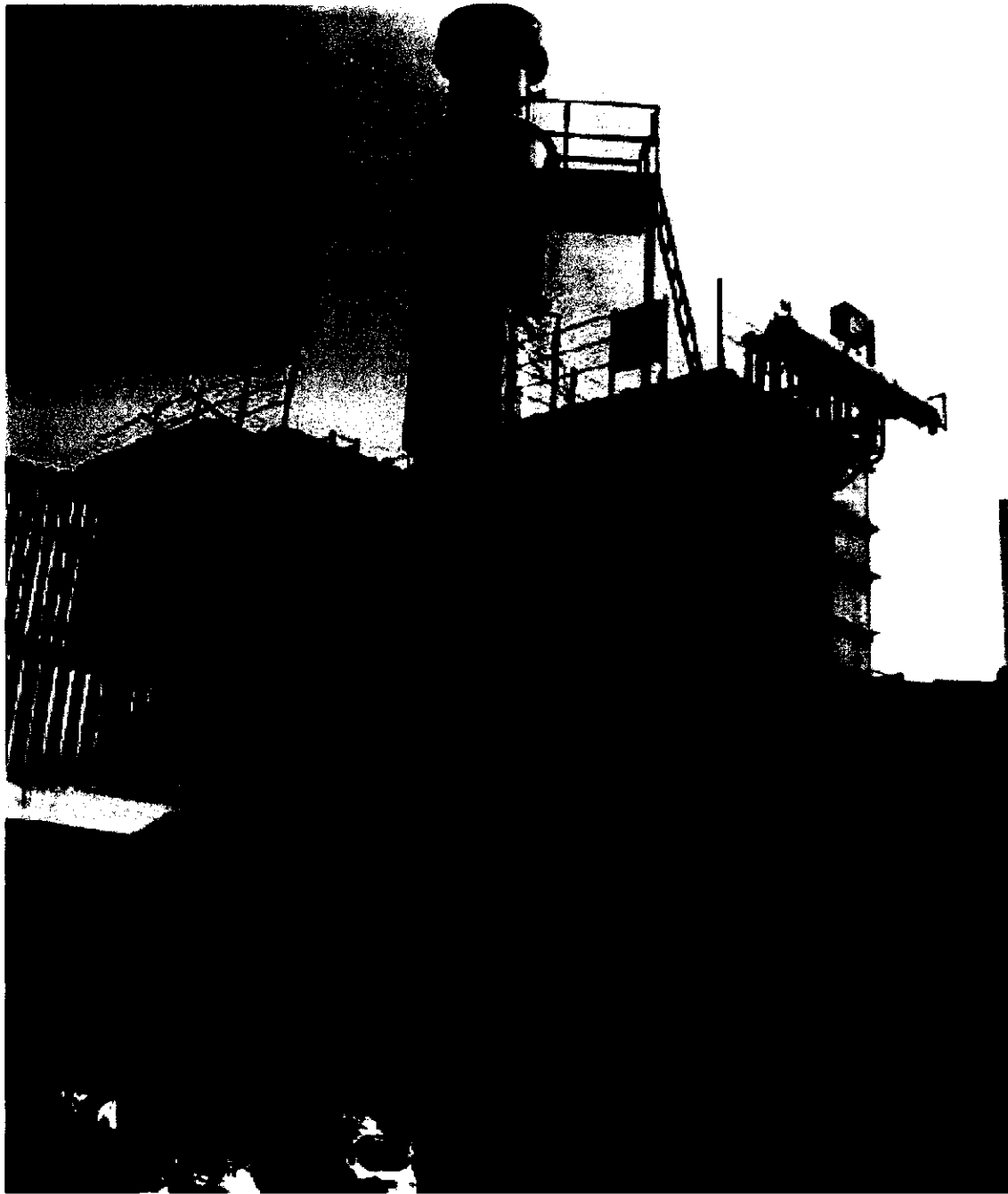
8	Waste Sand –Sand Reclamation Plant	M/s. Indoshell Mould Limited, Plant-I	31.12.2010	1.45	Order placed to M/s. Wesman Engg.Pvt. Limited,Calcutta. It will be installed and Commissioned before January 2012 for their group concern.
9	Induction Furnace-Bag filter	M/s. Indoshell Mould Limited, Plant-II	31.12.2010	14.50	Installation of Bag filter is completed. It is in operation.
	Waste Sand – Sand Reclamation Plant		31.12.2010	90	Order placed to M/s. Wesman Engg.Pvt. Limited,Calcutta. It will be installed and Commissioned before January 2012 for their group concern.
	Knockout – Dust Collector		31.12.2010	10	Erection of machineries is under progress. It will be completed end of September 2011.
10	Trade Effluent-RO System	M/s. VXL Ring Travellers (P) Ltd	30.07.2010	10	R.O. Completed and it is in operation.
11	Induction Furnace – bag Filter	M/s. Sri Seethalakshmi Steel Castings (P) Limited	31.08.2010	2.0	Bag filter provided and it is in operation.
	Sand Plant – Bag Filter		30.07.2010	3.5	Provided bag filter to sand plant.
12	Knockout-Wet Scrubber	M/s. Jayashree Metal Casters (P) Limited	30.09.2010	2.50	Wet Scrubber provided and it is in operation.
13	Trade Effluent-RO Plant	M/s. Janatics India Pvt.Limited	30.07.2010	5	RO Plant provided and it is in operation.

14	Sewage – STP		M/s. Titan Paints & Chemicals	30.09.2010	8	STP installed and it is in operation.
15	a	Braking Section-To be mechanized	M/s. KMR Metal Mart	31.08.2010	4.75	Two number of Mechanical breaking machines installed. It is under operation.
	b	House Keeping – To be improved		31.08.2010	2.0	Impervious flooring was provided to avoid leachate.
16	Carbon Handling – To be improved Rubber Curring – Fume Extraction System		Treads Direct Limited Pvt. Industrial Estate, Coimbatore - 21	31.08.2010	1.0	Covering with G.I. sheet to the carbon handling section work was completed.
				31.08.2010	8.0	Fume extraction system is in operation.
17	Rotary Furnace – Wet Scrubber capacity to be improved		Vignesh Alloys Pvt.Limited	31.08.2010	12.0	Work completed and it is in operation.
18	Induction Furnace – Bag Filter & Wet Scrubber to be provided		Ferros Alloys, N-3, SIDCO, COimbatore – 21.	30.09.2010	4.0	Modification of wet scrubber and providing new bag filter is completed. It is under operation.
19	Pit Furnaces – APC to be improved		SKR Metal Refiners and Suppliers	31.08.2010	2.0	Bag filter with wet scrubber is provided. It is in operation.

CUPOLA FURNACE- NPC DESIGN WET SCRUBBER & STACK.

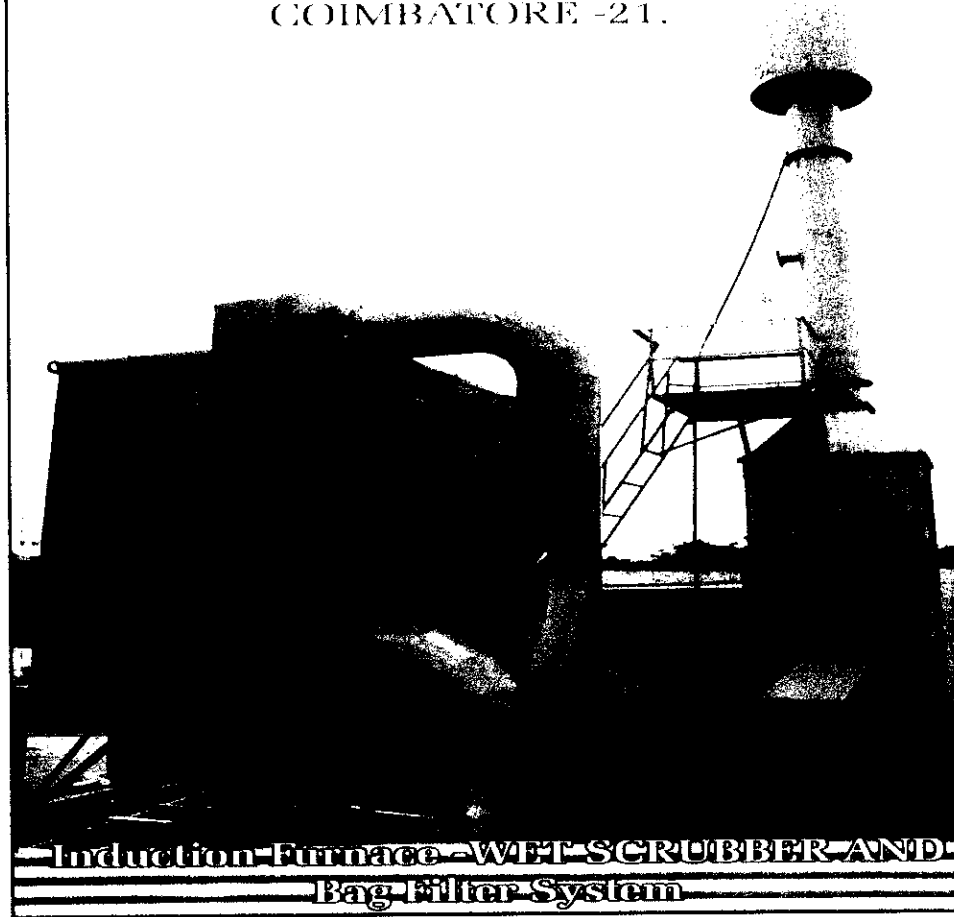






BAG FILTER PROVIDED IN M/s INDOSHELL CAST PVT LTD

AUTO SHELL PERFECT MOULDER LTD
COIMBATORE -21.

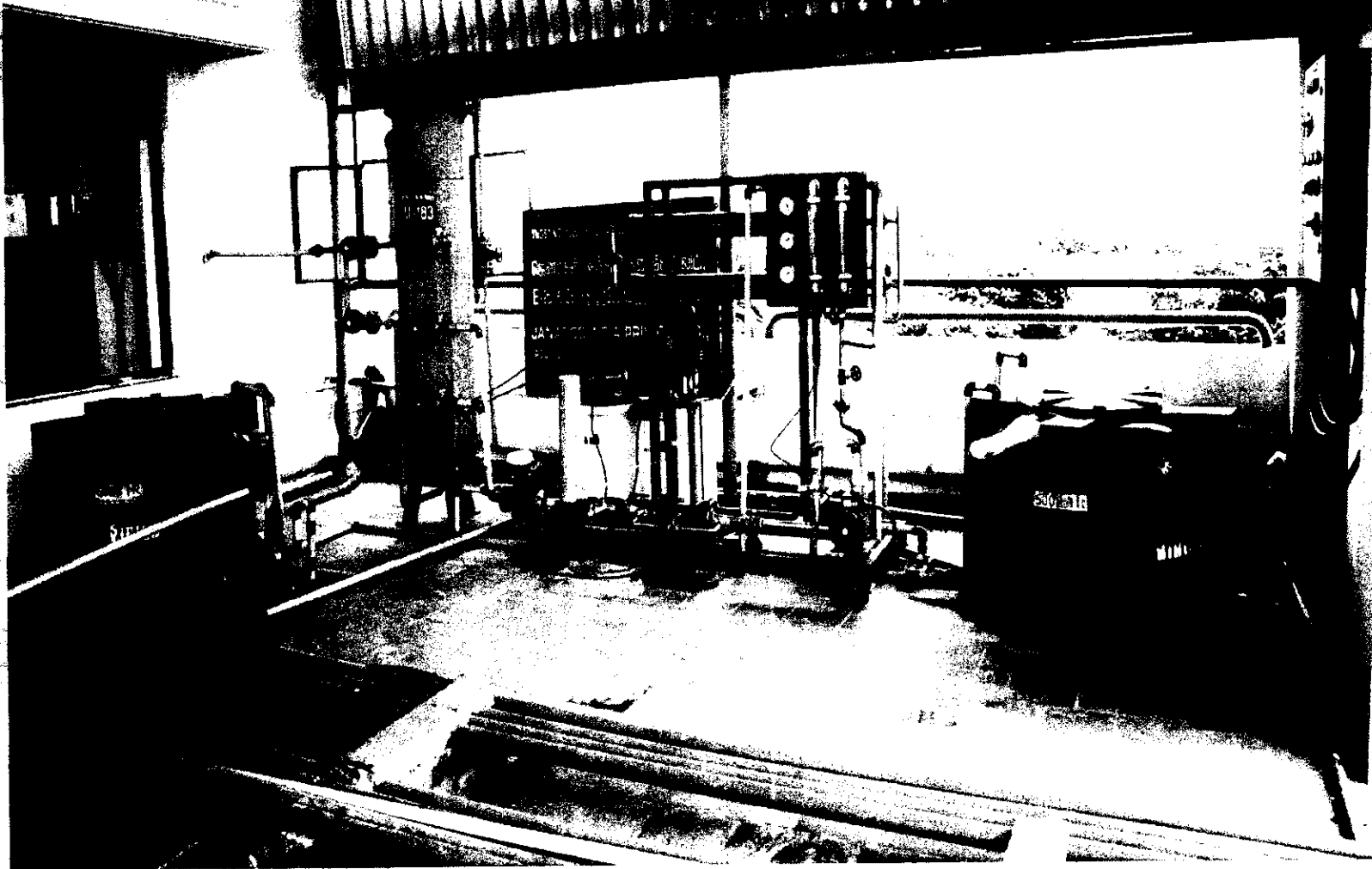


Induction Furnace WET SCRUBBER AND
Bag Filter System

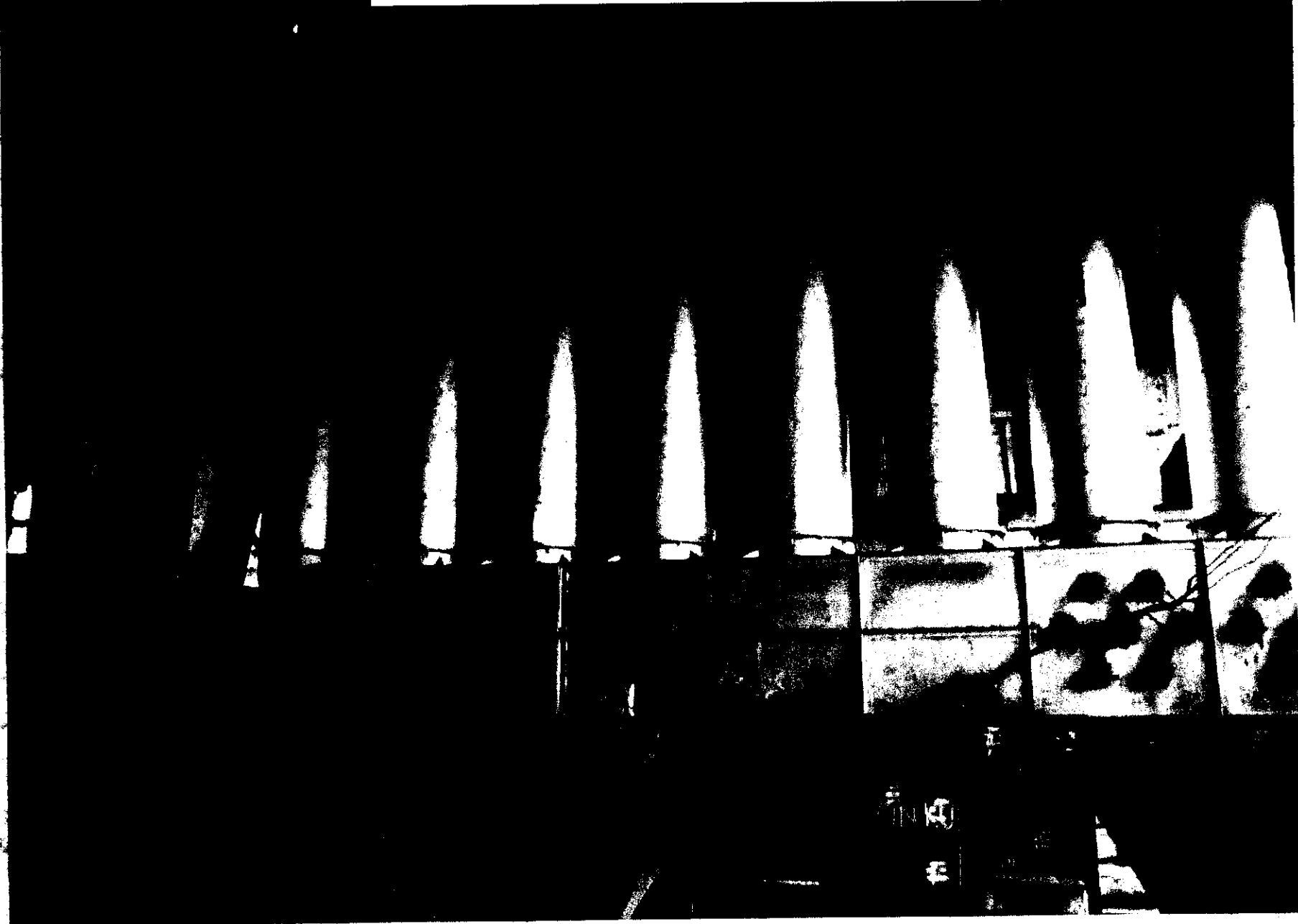
JANATICS INDIA PRIVATE LTD

E-25, SIDCO INDUSTRIAL ESTATE, COIMBATORE-641021

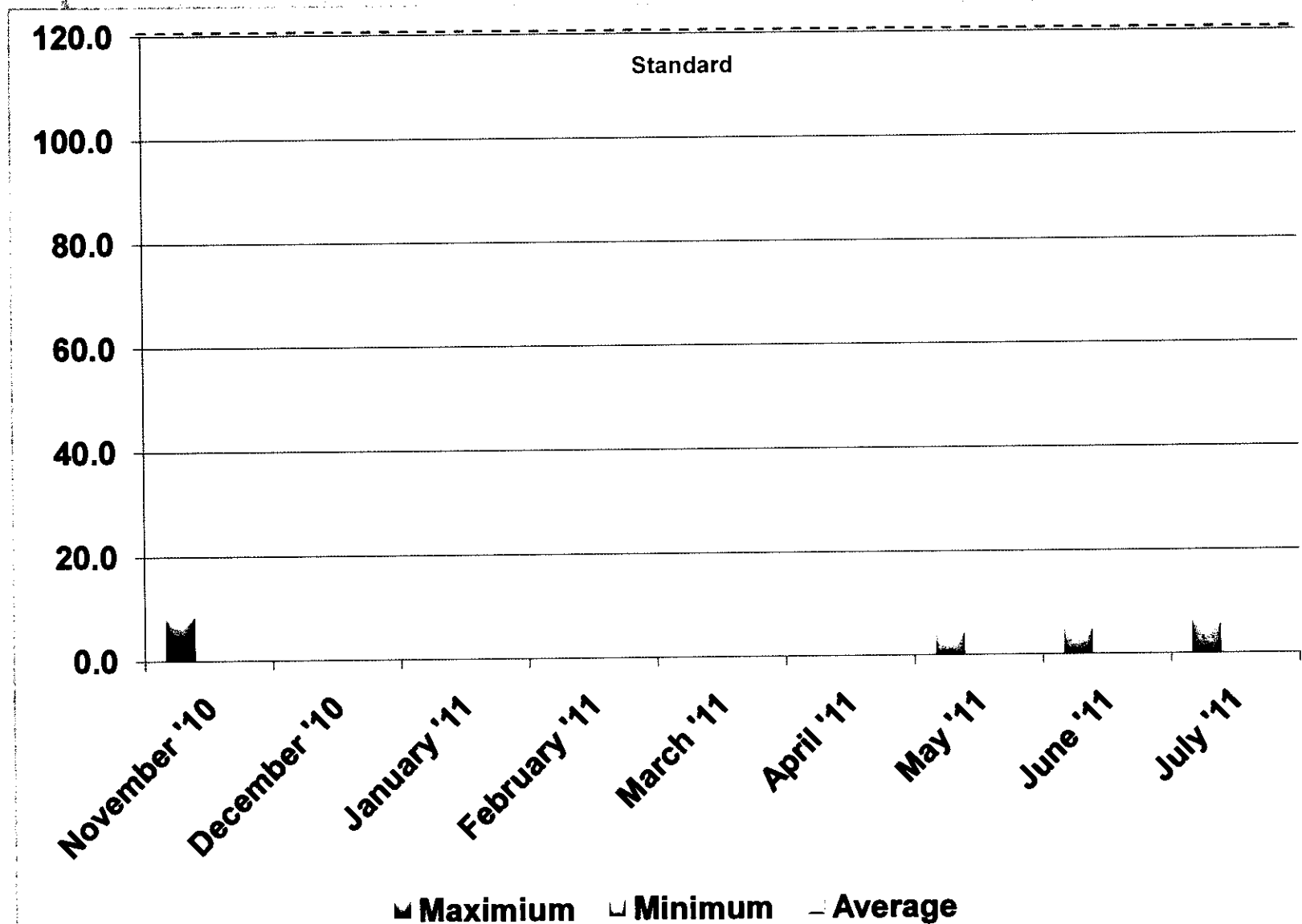
ETP & RO PLANT



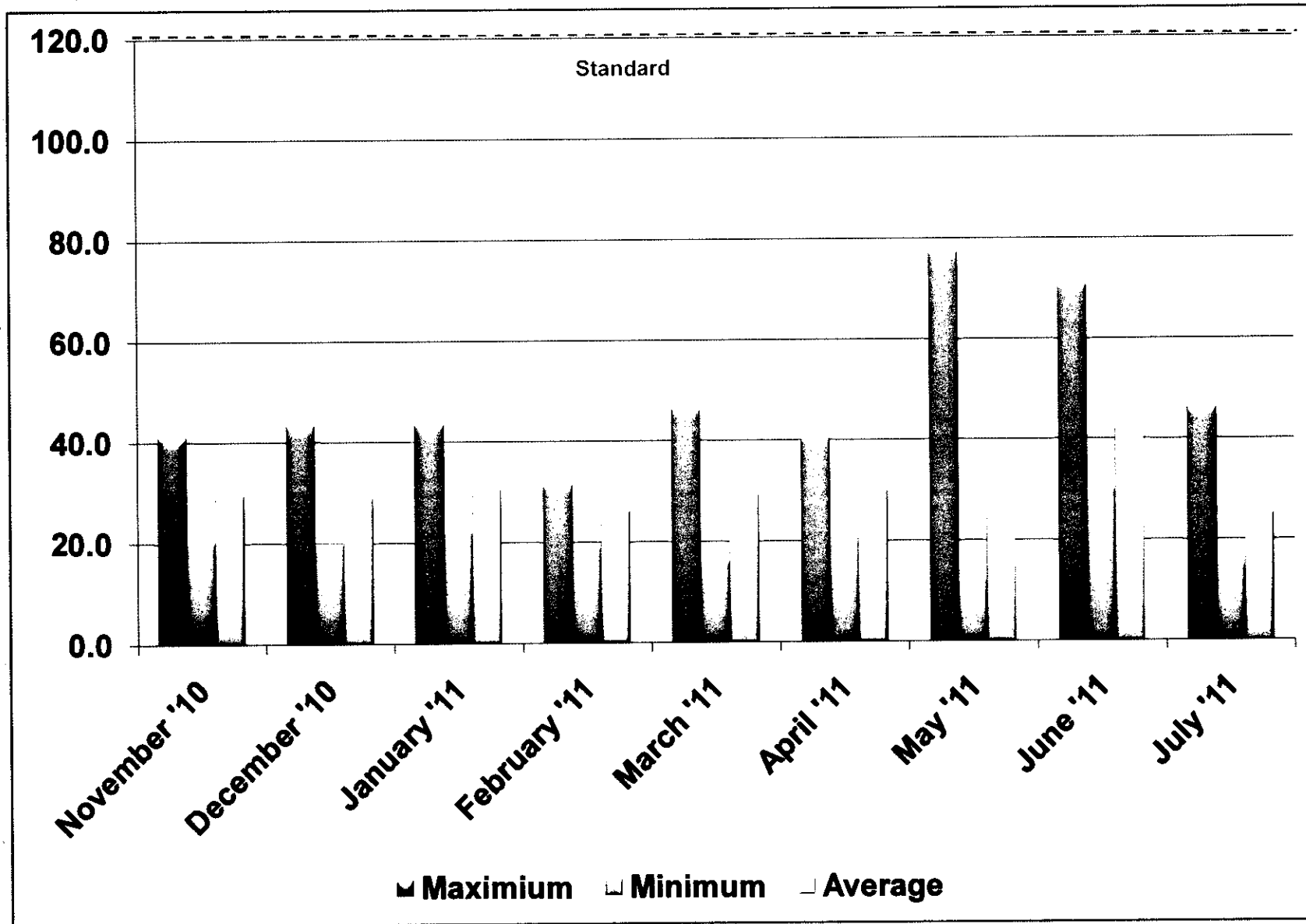
APC MEASURES PROVIDED IN M/s KMR METAL MART



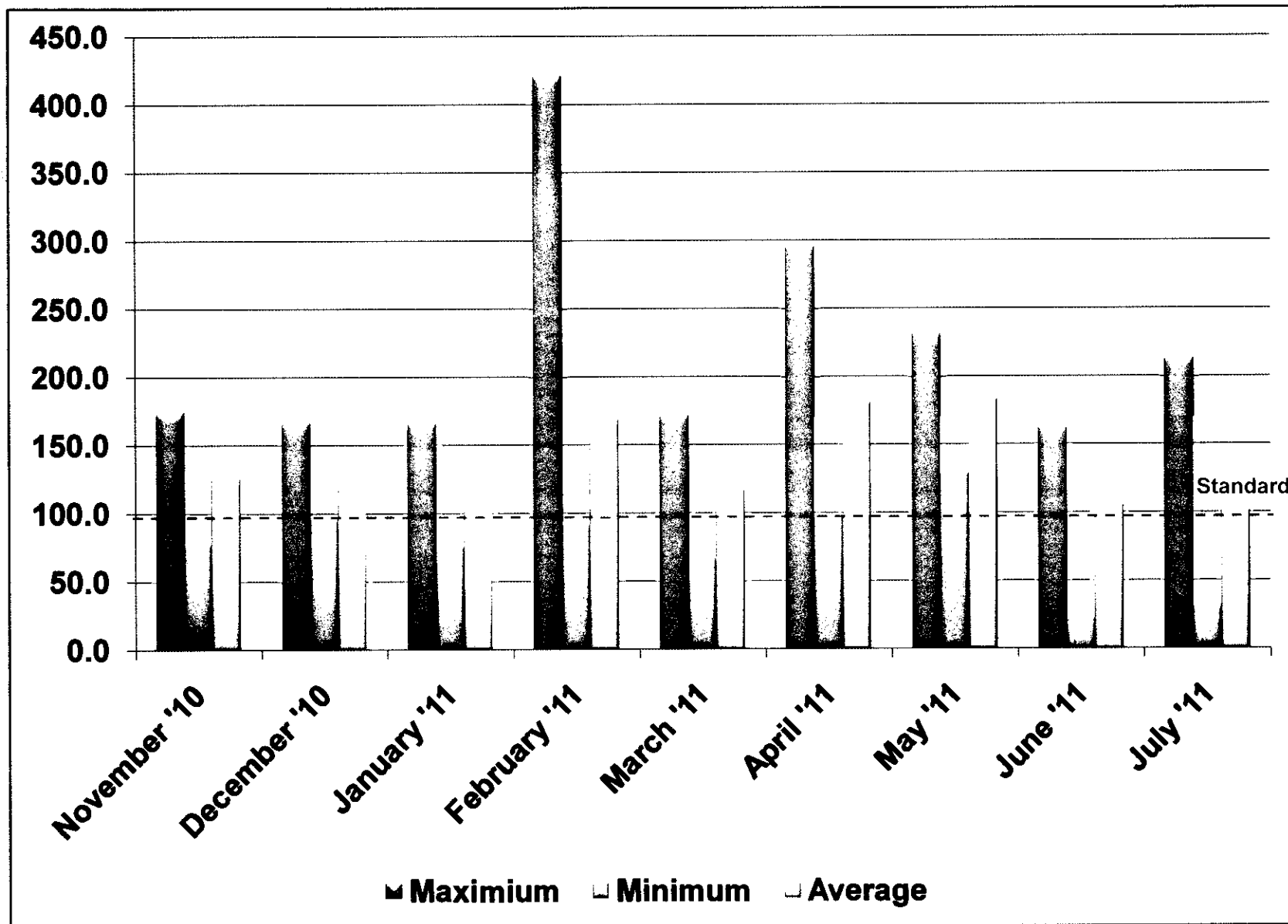
TREND OF SO₂ OBSERVED AT SIDCO, KURICHI (PERIOD FROM NOVEMBER 2010 TO JULY 2011)



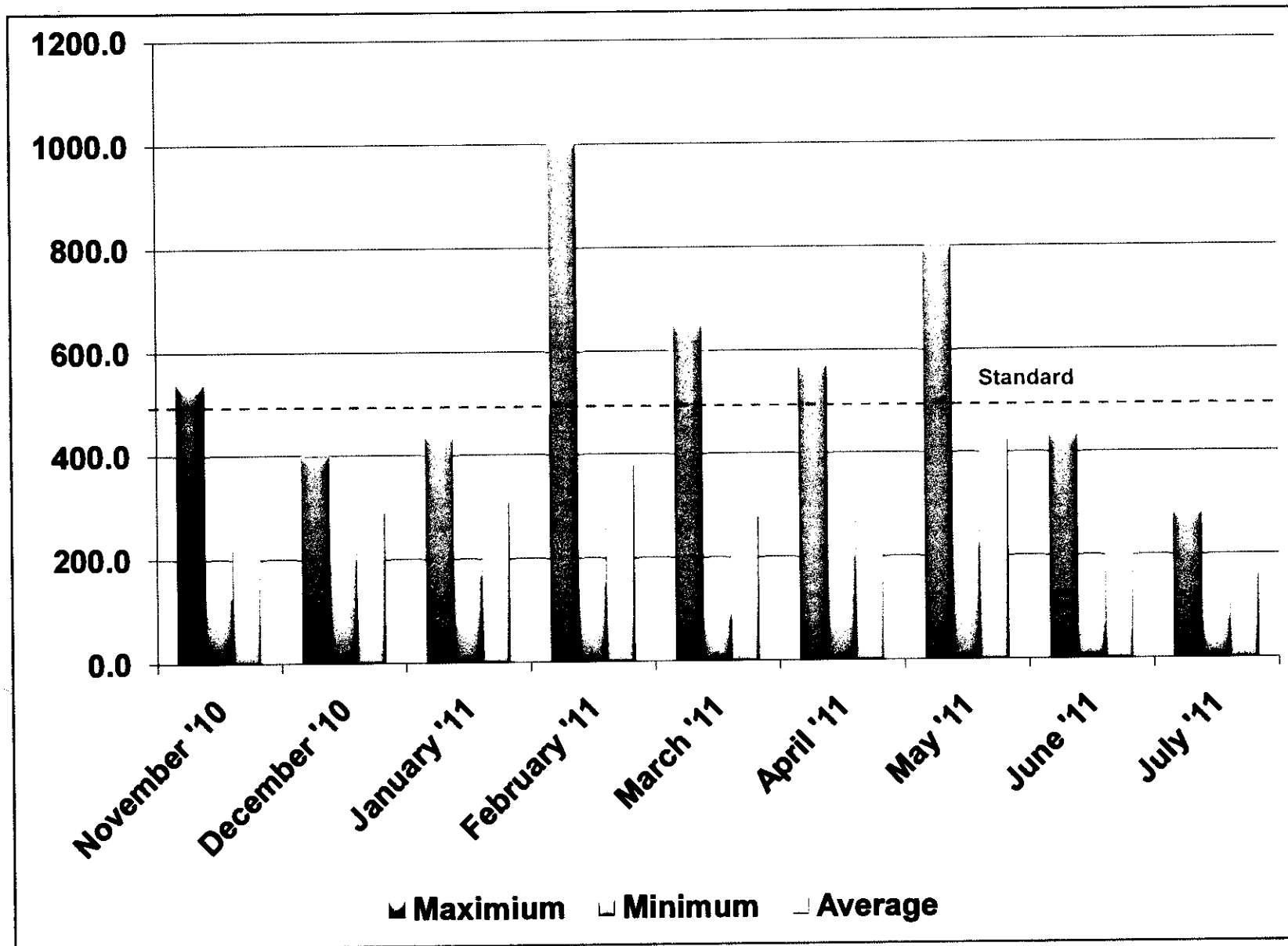
TREND OF NOX OBSERVED AT SIDCO, KURICHI (PERIOD FROM NOVEMBER 2010 TO JULY 2011)



TREND OF RSPM OBSERVED AT SIDCO, KURICHI (PERIOD FROM NOVEMBER 2010 TO JULY 2011)



TREND OF SPM OBSERVED AT SIDCO, KURICHI (PERIOD FROM NOVEMBER 2010 TO JULY 2011)



REPORT OF ANALYSIS OF THE SURFACE WATER SAMPLE COLLECTED IN RIVER NOYYAL AT NANJUNDAPURAM

Sl. No.	Parameters	Unit	Results / Date of sampling						
			30.11.2010	28.12.2010	19.01.2011	11.02.2011	30.03.2011	27.04.2011	29.06.2011
1	pH	---	7.31	7.25	8.04	7.23	7.04	7.45	7.44
2	Conductivity	micro mhos/cm	2210	3950	3060	1441	1326	2370	1800
3	TSS	mg/l	42	36	20	18	36	14	22
4	TDS	mg/l	1178	1976	1358	---	---	---	---
5	Oil & Grease	mg/l	1	1	<1.0	<1.0	1	<1.0	<1.0
6	BOD	mg/l	3	7	4	8	7	- 2 -	<2.0
7	COD	mg/l	23	56	31	63	56	24	8
8	Total residual chlorine	mg/l	<1.0	<1.0	44	<1.0	<1.0	<1.0	<1.0
9	Ammonical Nitrogen	mg/l	<5.0	<5.0	<5.0	<5.0	<5.0	<5.0	<5.0
10	Total Kjeldahl Nitrogen	mg/l	<5.0	<5.0	<5.0	<5.0	<5.0	<5.0	<5.0
11	Free Ammonia	mg/l	<3.0	<3.0	<3.0	<3.0	<3.0	<3.0	<3.0
12	Nitrate Nitrogen	mg/l	0.22	0.5	0.29	0.24	0.51	1.07	0.99
13	Sulphide	mg/l	<1.0	<1.0	<1.0	<1.0	<1.0	<1.0	<1.0
14	Fluoride	mg/l	<1.0	<0.1	<0.1	<1.0	<1.0	<0.1	<1.0
15	Cyanide	mg/l	<0.005	<0.005	<0.005	<0.005	<0.005	<0.005	0.006
16	Phenolic Compounds	mg/l	<0.0005	0.07	0.04	<0.0005	<0.0005	<0.0005	0.007

17	Manganese	mg/l	0.299	<0.001	<0.001	<0.001	<0.001	0.013	<0.001
18	Total Iron	mg/l	---	0.18	0.04	0.07	0.15	---	---
19	Total Chromium	mg/l	<0.01	0.13	<0.01	<0.01	<0.01	<0.01	0.434
20	Hexavalent Chromium	mg/l	<0.01	<0.01	<0.01	<0.01	<0.01	<0.01	0.150
21	Copper	mg/l	0.056	0.013	0.017	0.015	0.194	0.129	<0.0015
22	Zinc	mg/l	0.194	0.112	0.186	0.124	0.286	0.157	<0.0015
23	Lead	mg/l	<0.015	<0.015	<0.015	<0.015	<0.015	<0.015	<0.015
24	Cadmium	mg/l	<0.0008	<0.0008	<0.0008	<0.0008	<0.0008	0.042	<0.0008
25	Nickel	mg/l	<0.006	0.42	0.787	0.812	0.012	0.071	<0.006
26	Phosphates	mg/l	0.6	0.11	0.34	<0.15	0.28	0.35	<0.015
27	SAR	---	9.3	16.89	7	---	1.8	---	---

REPORT OF ANALYSIS OF THE SURFACE WATER SAMPLE COLLECTED IN M/s.SURYA INDUSTRIES

Sl. No.	Parameters	Unit	Results / Date of sampling						
			30.11.2010	28.12.2010	19.01.2011	11.02.2011	30.03.2011	27.04.2011	29.06.2011
1	pH	---	7.01	6.99	7.28	6.77	6.76	7.07	7.38
2	Conductivity	micro mhos / cm	4020	6770	5120	3550	1661	2680	3150
3	TSS	mg/l	10	-6-	36	40	18	14	10
4	TDS	mg/l	3346	3452	2702	---	---	---	---
5	Oil & Grease	mg/l	<1.0	<1.0	<1.0	<1.0	<1.0	<1.0	<1.0
6	BOD	mg/l	12	3	6	2	3	- 2 -	2
7	COD	mg/l	101	24	47	16	24	32	16
8	Total residual chlorine	mg/l	<1.0	<1.0	<1.0	<1.0	<1.0	<1.0	<1.0
9	Ammonical Nitrogen	mg/l	<5.0	<5.0	<5.0	<5.0	<5.0	<5.0	<5.0
10	Total Kjeldahl Nitrogen	mg/l	<5.0	<5.0	<5.0	<5.0	<5.0	<5.0	<5.0
11	Free Ammonia	mg/l	<3.0	<3.0	<3.0	<3.0	<3.0	<3.0	<3.0
12	Nitrate Nitrogen	mg/l	11.9	1.9	2.1	7.5	32.8	34.5	25.6
13	Sulphide	mg/l	<1.0	<1.0	<1.0	<1.0	<1.0	<1.0	<1.0
14	Fluoride	mg/l	<1.0	<1.0	<1.0	<1.0	<1.0	<1.0	<1.0
15	Cyanide	mg/l	<0.005	<0.005	<0.005	<0.005	<0.005	<0.005	<0.005
16	Phenolic Compounds	mg/l	<0.0005	0.03	0.01	<0.0005	<0.0005	<0.0005	<0.0005

17	Manganese	mg/l	0.264	<0.001	<0.001	<0.001	<0.001	0.041	<0.001
18	Total Iron	mg/l	---	0.06	0.56	0.39	0.45	---	---
19	Total Chromium	mg/l	<0.01	<0.01	<0.01	<0.01	<0.01	<0.01	0.434
20	Hexavalent Chromium	mg/l	<0.01	<0.01	<0.01	<0.01	<0.01	<0.01	0.003
21	Copper	mg/l	0.081	0.069	0.035	0.021	<0.0015	0.113	0.176
22	Zinc	mg/l	0.249	0.198	0.232	0.184	<0.0015	0.599	0.113
23	Lead	mg/l	<0.015	<0.015	<0.015	<0.015	<0.015	<0.015	<0.015
24	Cadmium	mg/l	<0.0008	<0.0008	<0.0008	<0.0008	<0.0008	0.085	<0.0008
25	Nickel	mg/l	0.063	0.675	0.801	0.523	<0.006	0.021	<0.006
26	Phosphates	mg/l	0.15	0.15	0.08	<0.15	<0.15	<0.15	<0.015
27	SAR	---	15.7	15.57	15	---	11.9	---	---

REPORT OF ANALYSIS OF THE SURFACE WATER SAMPLE COLLECTED IN M/s.INDOSHELL MOULD LTD., UNIT-II

Sl. No.	Parameters	Unit	Results / Date of sampling						
			30.11.2010	28.12.2010	19.01.2011	11.02.2011	30.03.2011	27.04.2011	29.06.2011
1	pH	---	6.98	7.13	7.57	7.14	7.06	7.45	7.10
2	Conductivity	micromhos / cm	2730	3380	3310	2530	1340	2480	2250
3	TSS	mg/l	10	34	14	16	12	4	4
4	TDS	mg/l	810	1592	1584	---	---	---	---
5	Oil & Grease	mg/l	<1.0	<1.0	<1.0	<1.0	<1.0	<1.0	<1.0
6	BOD	mg/l	3	3	4	3	6	- 3 -	<2
7	COD	mg/l	23	24	31	24	48	16	8
8	Total residual chlorine	mg/l	<1.0	<1.0	<1.0	18	<1.0	<1.0	<1.0
9	Ammonical Nitrogen	mg/l	<5.0	<5.0	<5.0	<5.0	<5.0	<5.0	<5.0
10	Total Kjeldahl Nitrogen	mg/l	<5.0	<5.0	<5.0	<5.0	<5.0	<5.0	<5.0
11	Free Ammonia	mg/l	<3.0	<3.0	<3.0	<3.0	<3.0	<3.0	<3.0
12	Nitrate Nitrogen	mg/l	2.9	1.9	1.4	1.49	20	14.5	16.4
13	Sulphide	mg/l	<1.0	<1.0	<1.0	<1.0	<1.0	<1.0	<1.0
14	Fluoride	mg/l	<1.0	<1.0	<1.0	<1.0	<1.0	<1.0	<1.0
15	Cyanide	mg/l	<0.005	<0.005	<0.005	<0.005	<0.005	<0.005	<0.005
16	Phenolic Compounds	mg/l	<0.0005	0.1	0.08	<0.0005	<0.0005	<0.0005	0.029

17	Manganese	mg/l	0.248	<0.001	<0.001	<0.001	<0.001	0.051	<0.001
18	Total Iron	mg/l	---	0.24	0.06	0.01	0.02	---	---
19	Total Chromium	mg/l	<0.01	<0.01	<0.01	<0.01	<0.01	<0.01	<0.01
20	Hexavalent Chromium	mg/l	<0.01	<0.01	<0.01	<0.01	<0.01	<0.01	0.01
21	Copper	mg/l	0.079	0.06	0.044	0.024	0.168	0.077	0.186
22	Zinc	mg/l	0.203	0.213	0.207	0.203	0.261	0.132	0.120
23	Lead	mg/l	0.086	<0.015	<0.015	<0.015	<0.015	<0.015	0.065
24	Cadmium	mg/l	<0.0008	<0.0008	<0.0008	<0.0008	<0.0008	0.088	<0.0008
25	Nickel	mg/l	<0.006	0.651	0.78	0.56	<0.006	0.089	<0.006
26	Phosphates	mg/l	0.15	0.13	0.17	<0.15	<0.15	<0.15	<0.015
27	SAR	---	11.2	15.4	9.1	---	1.8	1.8	1.8

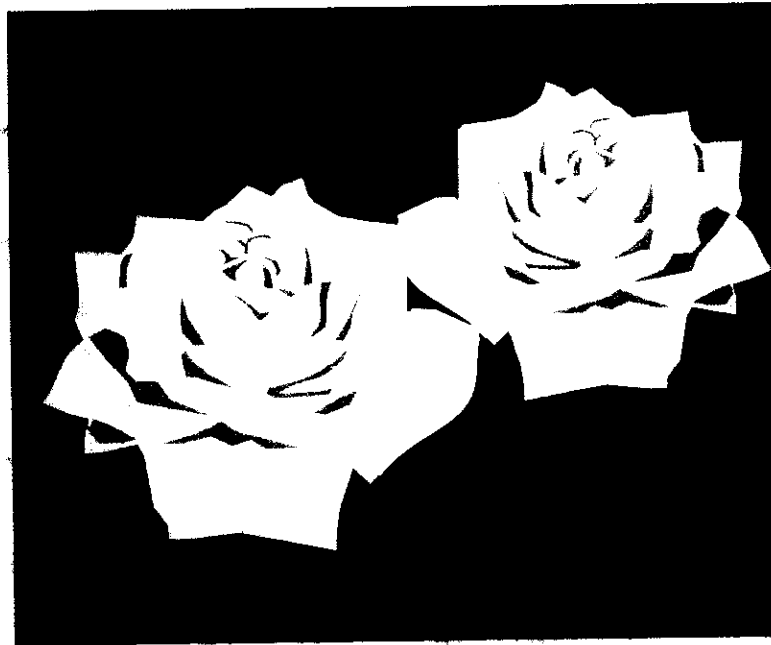
REPORT OF ANALYSIS OF THE SURFACE WATER SAMPLE COLLECTED IN KURICHI KULAM

SI. No.	Parameters	Unit	Results / Date of sampling						
			30.11.2010	28.12.2010	19.01.2011	11.02.2011	30.03.2011	27.04.2011	29.06.2011
1	pH	---	6.84	7.57	7.87	7.78	7.67	7.68	7.51
2	Conductivity	micro mhos/cm	421	470	2480	303	263	50	466
3	TSS	mg/l	24	28	36	22	20	18	78
4	TDS	mg/l	212	292	2702	---	---	---	---
5	Oil & Grease	mg/l	1	1	<1.0	<1.0	1	<1.0	<1.0
6	BOD	mg/l	6	5	6	6	4	- 3 -	- 3 -
7	COD	mg/l	62	40	47	47	40	24	24
8	Total residual chlorine	mg/l	<1.0	<1.0	<1.0	<1.0	<1.0	<1.0	<1.0
9	Ammonical Nitrogen	mg/l	<5.0	<5.0	<5.0	<5.0	<5.0	<5.0	<5.0
10	Total Kjeldahl Nitrogen	mg/l	<5.0	<5.0	<5.0	<5.0	<5.0	<5.0	<5.0
11	Free Ammonia	mg/l	<3.0	<3.0	<3.0	<3.0	<3.0	<3.0	<3.0
12	Nitrate Nitrogen	mg/l	0.34	0.3	0.17	0.15	0.15	0.076	0.45
13	Sulphide	mg/l	<1.0	<1.0	<1.0	<1.0	<1.0	<1.0	<1.0
14	Fluoride	mg/l	<1.0	<1.0	<1.0	<1.0	<1.0	<1.0	<1.0
15	Cyanide	mg/l	<0.005	<0.005	<0.005	<0.005	<0.005	<0.005	<0.005
16	Phenolic Compounds	mg/l	<0.0005	0.09	0.16	<0.0005	<0.0005	<0.0005	0.014

17	Manganese	mg/l	0.248	<0.001	<0.001	<0.001	<0.001	0.024	<0.001
18	Total Iron	mg/l	---	0.34	0.41	0.25	0.05	---	---
19	Total Chromium	mg/l	<0.01	<0.01	0.13	<0.01	<0.01	<0.01	<0.01
20	Hexavalent Chromium	mg/l	<0.01	<0.01	<0.01	<0.01	<0.01	<0.01	<0.01
21	Copper	mg/l	0.079	0.049	0.013	0.024	<0.0015	0.065	<0.0015
22	Zinc	mg/l	0.203	0.134	0.217	0.142	0.296	1.403	<0.0015
23	Lead	mg/l	0.086	<0.015	<0.015	<0.015	<0.015	<0.015	<0.015
24	Cadmium	mg/l	<0.0008	<0.0008	<0.0008	<0.0008	<0.0008	0.097	<0.0008
25	Nickel	mg/l	<0.006	0.248	0.794	0.142	<0.0006	0.012	<0.006
26	Phosphates	mg/l	0.15	0.45	0.2	<0.15	<0.15	<0.15	0.17
27	SAR	---	11.2	5.2	4.6	---	4.9	---	---

● ACTION TO BE TAKEN

- 1. Common STP for the SIDCO Estate.
 - a. Proposal prepared.
 - b. Land to be allotted by SIDCO.
- 2. Continuous AAQ monitoring station.
 - a. Requested fund from GOI.
- 3. Sand Reclamation plant.
 - Out of 4 proposed 2 implemented.one will be implemented within 6 months and the remaining will be implemented within one year.
- 4. Green Belt Development.
 - a. 500 tree saplings planted during 2010.
 - b. 500 tree saplings planted during this year 2011.
 - c. proposed to plant 500 tree saplings during 2012.



Thank You